

BOSSIER CITY, LOUISIANA

HI-VOR/DME Z RWY 33

VORTAC EMG 111.2 Chan 49	APCH CRS 323°	Rwy Idg 11,758 THRE 161 Arpt Elev 165
--	-------------------------	--

[USAF]

BARKSDALE AFB (KBAD)

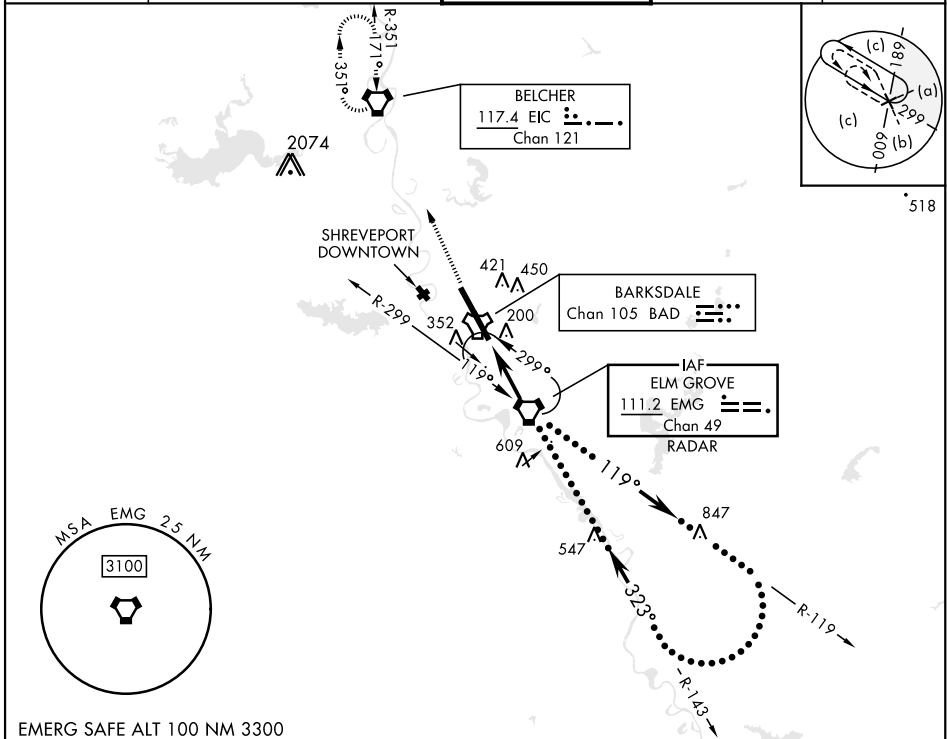
DME or RADAR required.

- * When ALS inop, increase CAT CDE vis to 1 $\frac{3}{8}$ miles.
- ** Circling not authorized W of Rwy.



MISSED APPROACH: Climb to 3100 direct to EIC VORTAC and hold.

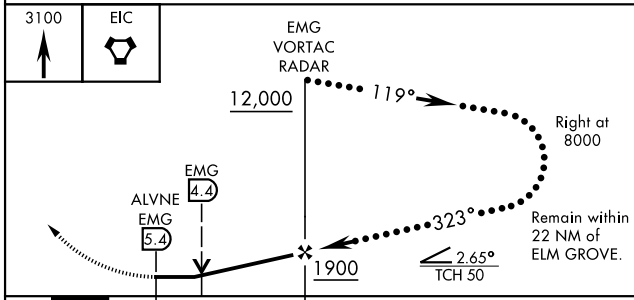
ATIS 307.025	SHREVEPORT APP CON 320°-152° 123.75 360.725 153°-319° 119.9 335.55	TOWER★ 128.25 278.3	GND CON 121.8 253.5	ASR
------------------------	--	-------------------------------	-------------------------------	-----



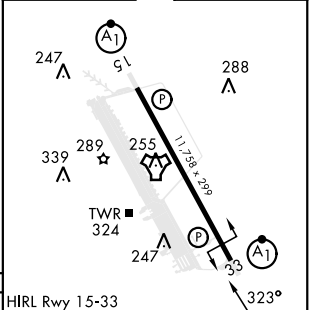
SC-4, 20 FEB 2025 to 20 MAR 2025

SC-4, 20 FEB 2025 to 20 MAR 2025

EMERG SAFE ALT 100 NM 3300



ELEV	165	THRE	161
------	-----	------	-----



CATEGORY	C	D	E
S-33*	640/50	479 (500-1)	
CIRCLING**	NOT AUTHORIZED	760-2 595 (600-2)	780-2 $\frac{1}{4}$ 615 (700-2 $\frac{1}{4}$)

HIRL Rwy 15-33	FAF to MAP 5.4 NM				
Knots	120	140	160	180	200
Min:Sec	2:42	2:19	2:01	1:48	1:37

BOSSIER CITY, LOUISIANA

32°30'N-93°40'W

BARKSDALE AFB (KBAD)

Amdt 5 25JUN15

HI-VOR/DME Z RWY 33