

# TACAN Y RWY 15

TACAN BAD Chan <b>105</b>	APCH CRS <b>158°</b>	Rwy Idg <b>11,758</b> THRE <b>163</b> Arpt Elev <b>165</b>
------------------------------	-------------------------	--

[USAF]

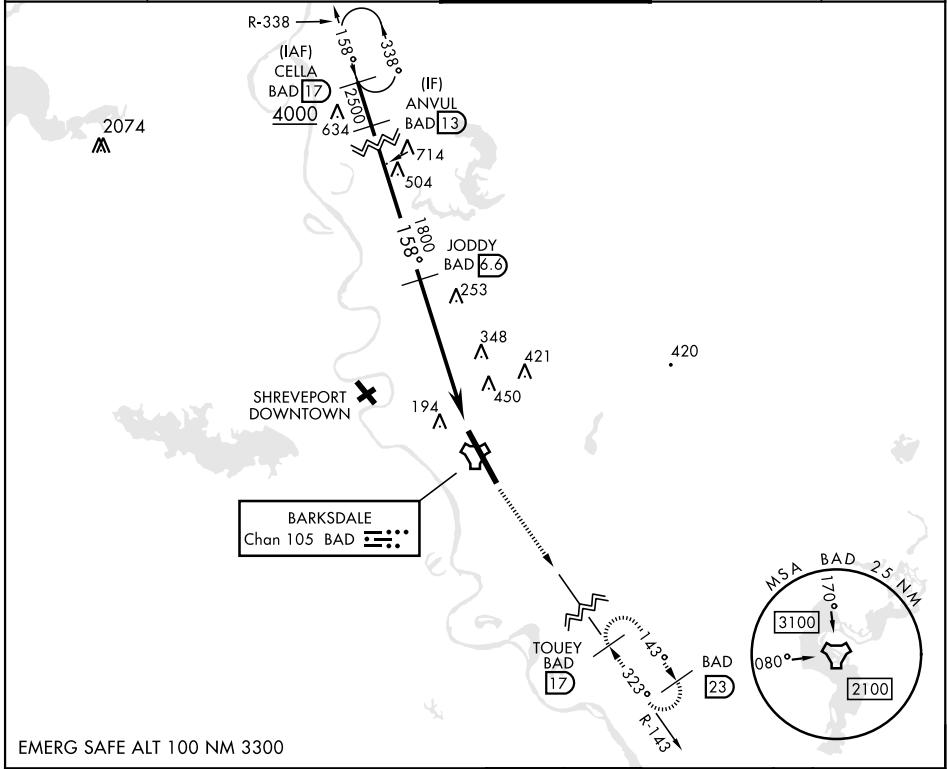
BARKSDALE AFB (KBAD)

\* When ALS inop, increase CAT AB RVR to 55 and vis to 1 mile  
CAT CDE vis to 1 3/4 miles.  
\*\* Circling not authorized W of Rwy.

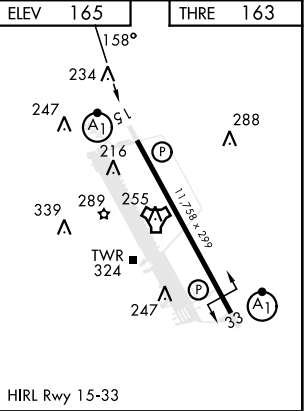
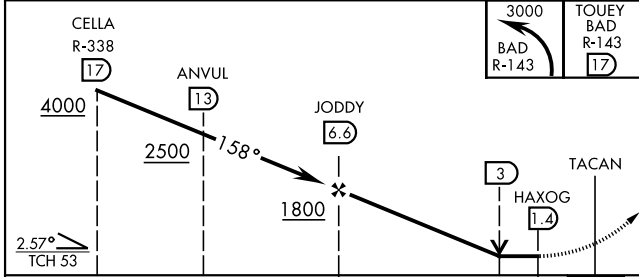


MISSED APPROACH: Climb to 3000 via  
BAD R-143 direct TOUEY and hold.

ATIS <b>307.025</b>	SHREVEPORT APP CON 320°-152° <b>123.75 360.725</b> 153°-319° <b>119.9 335.55</b>	TOWER * <b>128.25 278.3</b>	GND CON <b>121.8 253.5</b>	ASR
------------------------	--	--------------------------------	-------------------------------	-----



EMERG SAFE ALT 100 NM 3300



CATEGORY	A	B	C	D	E
S-15 *	800/24	637 (700-1/2)	800-1 3/8	637 (700-1 3/8)	
** CIRCLING	NOT AUTHORIZED		800-2 635 (700-2)	800-2 1/4 635 (700-2 1/4)	

HIRL Rwy 15-33

# TACAN Y RWY 15

SC-4, 20 FEB 2025 to 20 MAR 2025

SC-4, 20 FEB 2025 to 20 MAR 2025