

# TACAN Y RWY 33

TACAN BAD Chan 105	APCH CRS 323°	Rwy ldg 11,758 THRE 161 Arprt Elev 165
-----------------------	------------------	--

[USAF]

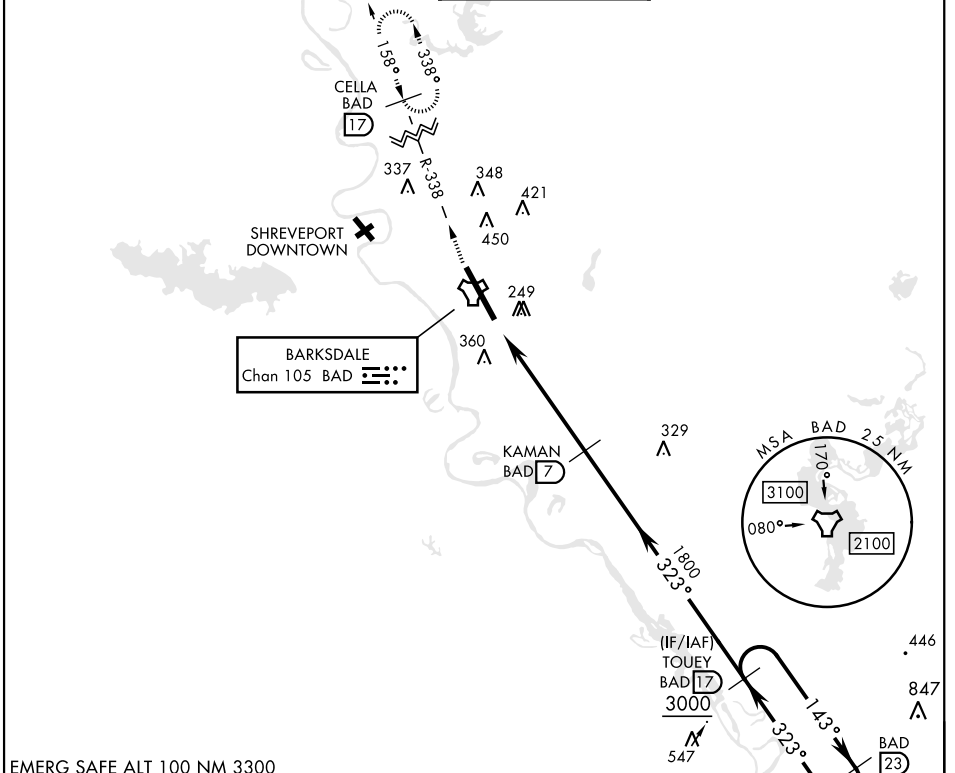
BARKSDALE AFB (KBAD)

\* When ALS inop, increase CAT AB RVR to 55 and vis to 1 mile,  
CAT CDE vis to 1 3/8 miles.  
\*\* Circling not authorized W of Rwy.

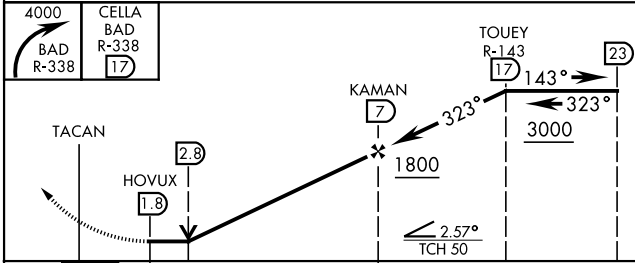


MISSED APPROACH: Climb to 4000 via  
BAD R-338 direct CELLA and hold.

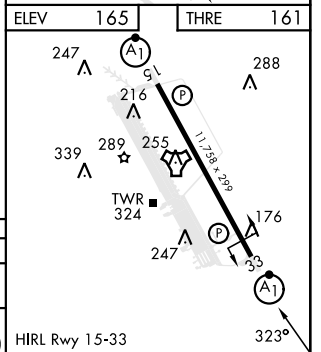
ATIS <b>307.025</b>	SHREVEPORT APP CON 320°-152° <b>123.75 360.725</b> 153°-319° <b>119.9 335.55</b>	TOWER * <b>128.25 278.3</b>	GND CON <b>121.8 253.5</b>	ASR
------------------------	--	--------------------------------	-------------------------------	-----



EMERG SAFE ALT 100 NM 3300



CATEGORY	A	B	C	D	E
S-33 *	640/24	479 (500-1/2)	640/50	479	(500-1)
CIRCLING **	NOT AUTHORIZED			760-2 595 (600-2)	780-2 1/4 615 (700-2 1/4)



# TACAN Y RWY 33

SC-4, 20 FEB 2025 to 20 MAR 2025

SC-4, 20 FEB 2025 to 20 MAR 2025