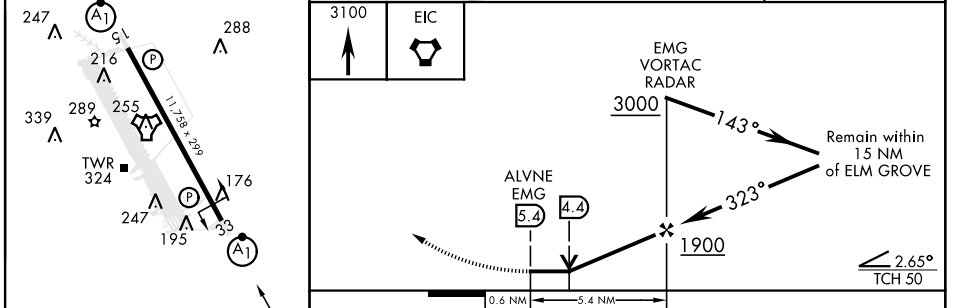
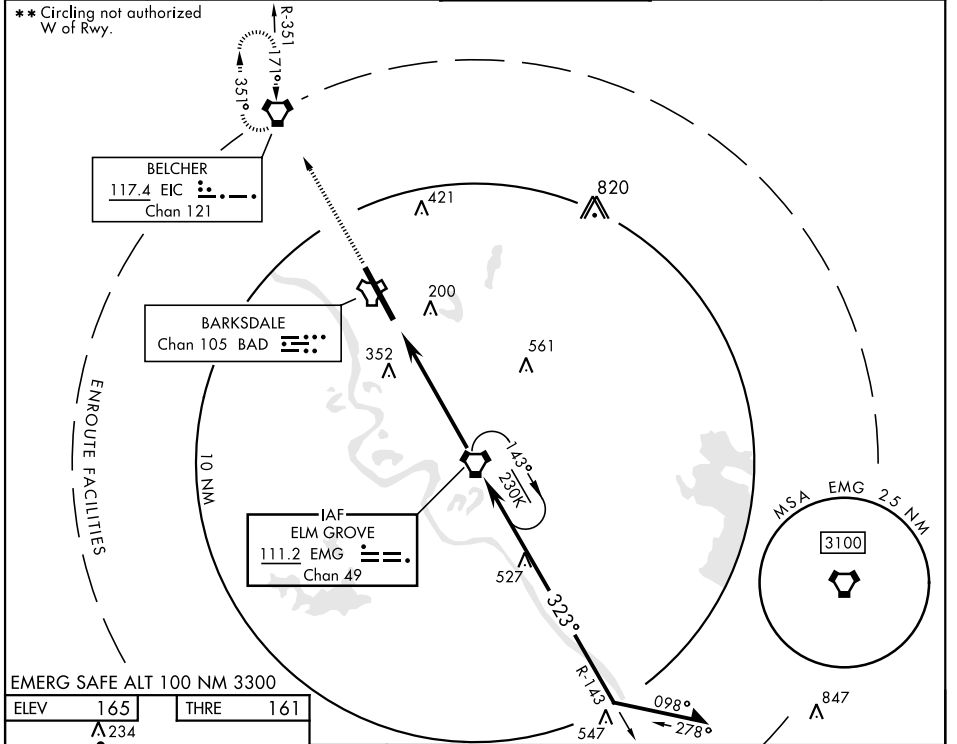


# VOR/DME Y RWY 33

VORTAC EMG <b>111.2</b> Chan 49	APCH CRS <b>323°</b>	Rwy Idg <b>11,758</b> THRE <b>161</b> Arprt Elev <b>165</b>	[USAF]	BARKSDALE AFB (KBAD)
---------------------------------------	-------------------------	---	--------	----------------------

DME or RADAR required.	ALSIF-1 	MISSED APPROACH: Climb to 3100 direct EIC VORTAC and hold.
------------------------	-------------	--

ATIS <b>307.025</b>	SHREVEPORT APP CON <b>123.75 360.725</b> (320°-152°) <b>119.9 335.55</b> (153°-319°)	TOWER ★ <b>128.25 278.3</b>	GND CON <b>121.8 253.5</b>	ASR
------------------------	--	--------------------------------	-------------------------------	-----



HIRL Rwy 15-33	323°
FAF to MAP 5.4 NM	
Knots	60 90 120 150 180
Min:Sec	5:24 3:36 2:42 2:10 1:48
<input checked="" type="checkbox"/> CIRCLING **	NOT AUTHORIZED
CATEGORY	A B C D E
S-VOR 33 *	640/24 479 (500-½) 640/50 479 (500-1)
	760-2 780-2¼ 595 (600-2) 615 (700-2¼)

# VOR/DME Y RWY 33

SC-4, 20 FEB 2025 to 20 MAR 2025

SC-4, 20 FEB 2025 to 20 MAR 2025