


LOC I-JOU 111.1	APP CRS 210°	Rwy Idg 8999 TDZE 1430 Apt Elev 1430
---------------------------	------------------------	---

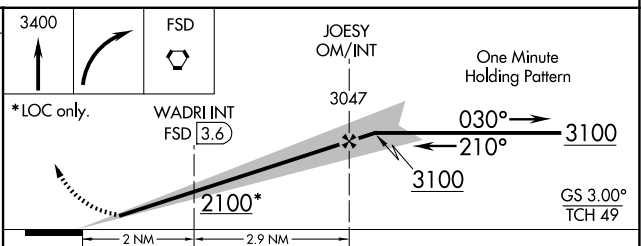
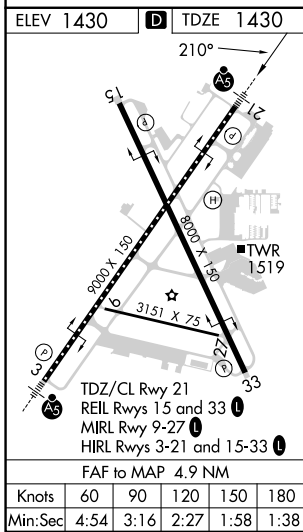
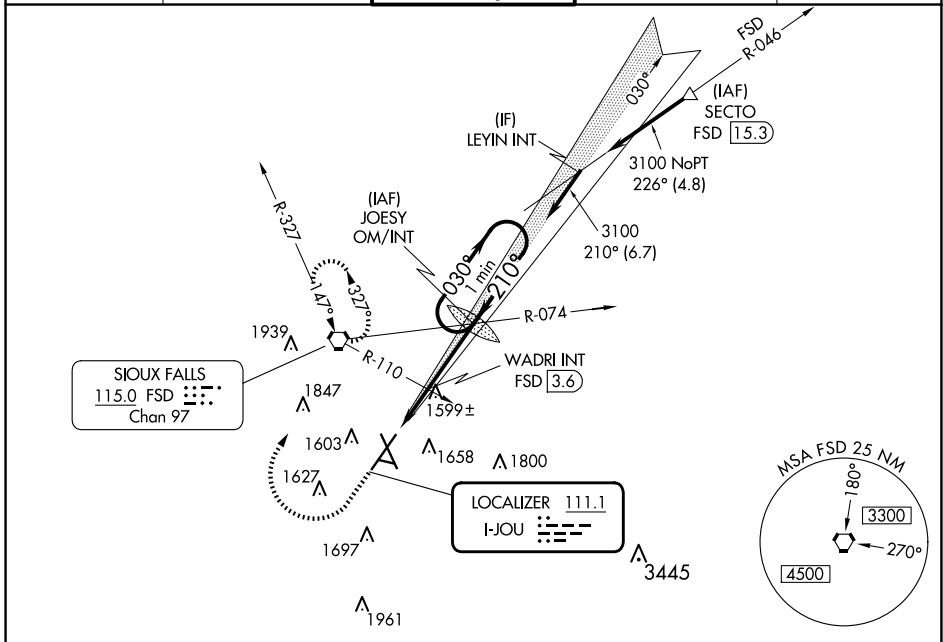
ILS or LOC RWY 21

JOE FOSS FLD (FSD)

ASR -31°C For inoperative MALSR increase S-ILS all Cats visibility to ¾ mile, increase S-LOC 21 Cat C/D visibility to 1½ mile. When using WADRI FIX minimums, increase S-LOC 21 Cat C/D visibility to 1 mile.

MALSR  MISSED APPROACH: Climb to 3400 then right turn direct FSD VORTAC and hold.

ATIS 126.6	SIoux FALLS APP CON * 125.8 284.725	SIoux FALLS TOWER * 118.3 (CTAF) 0 257.8	GND CON 121.9 348.6	UNICOM 122.95
----------------------	---	--	-------------------------------	-------------------------



CATEGORY	A	B	C	D
S-ILS 21	1630/18 200 (200-½)			
S-LOC 21	2100/24	670 (700-½)	2100-1½	670 (700-1½)
C CIRCLING	2100-1	670 (700-1)	2100-1¾	2200-2½
WADRI FIX MINIMUMS				
S-LOC 21	1800/24	370 (400-½)	1800/35	370 (400-¾)
C CIRCLING	1960-1	1980-1	2060-1¾	2200-2½
	530 (600-1)	550 (600-1)	630 (700-1¾)	770 (800-2½)

NC-1, 20 FEB 2025 to 20 MAR 2025

NC-1, 20 FEB 2025 to 20 MAR 2025