

APP CRS 272°	Rwy Idg 3151
	TDZE 1424
	Apt Elev 1430

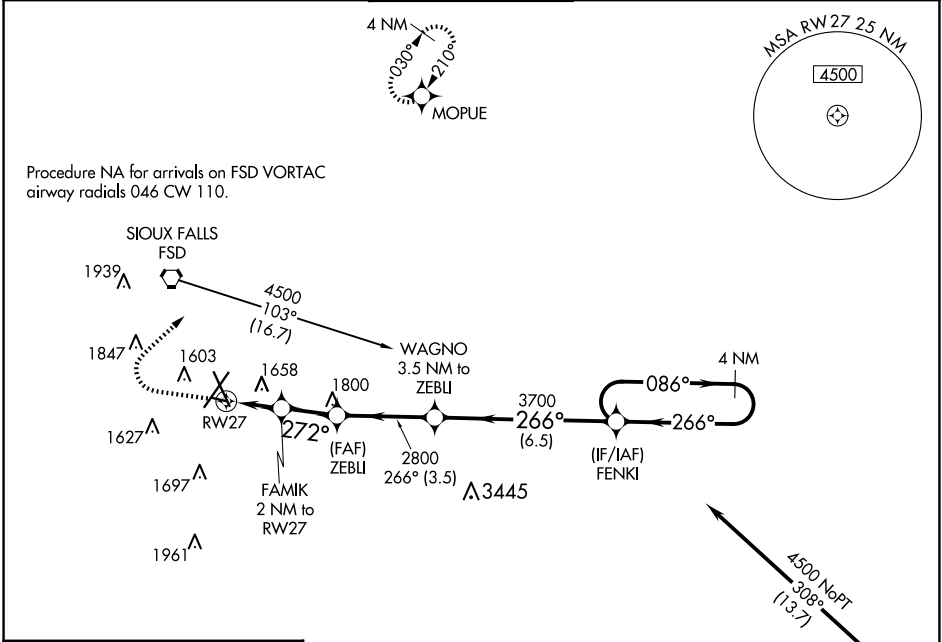
RNAV (GPS) RWY 27

JOE FOSS FLD (FSD)

RNP APCH.
 ASR Rwy 27 helicopter visibility reduction below 3/4 SM NA.
 -31°C

MISSED APPROACH: Climb to 2500, then climbing right turn to 4000 direct MOPIUE WP and hold.

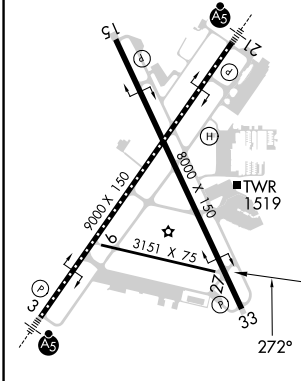
ATIS 126.6	SIoux FALLS APP CON* 125.8 284.725	SIoux FALLS TOWER* 118.3 (CTAF) 257.8	GND CON 121.9 348.6	UNICOM 122.95
----------------------	--	---	-------------------------------	-------------------------



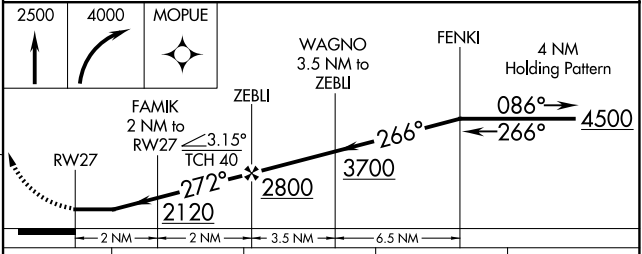
NC-1, 20 FEB 2025 to 20 MAR 2025

NC-1, 20 FEB 2025 to 20 MAR 2025

ELEV 1430	D	TDZE 1424
-----------	----------	-----------



TDZ/CL Rwy 21
 MIRL Rwy 9-27
 REIL Rws 15 and 33
 HIRL Rws 3-21 and 15-33



CATEGORY	A	B	C	D
LNAV MDA	1960-1	536 (600-1)	NA	
C CIRCLING	1960-1	1980-1	NA	
	530 (600-1)	550 (600-1)		