

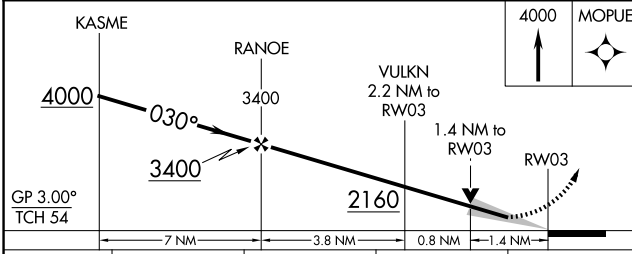
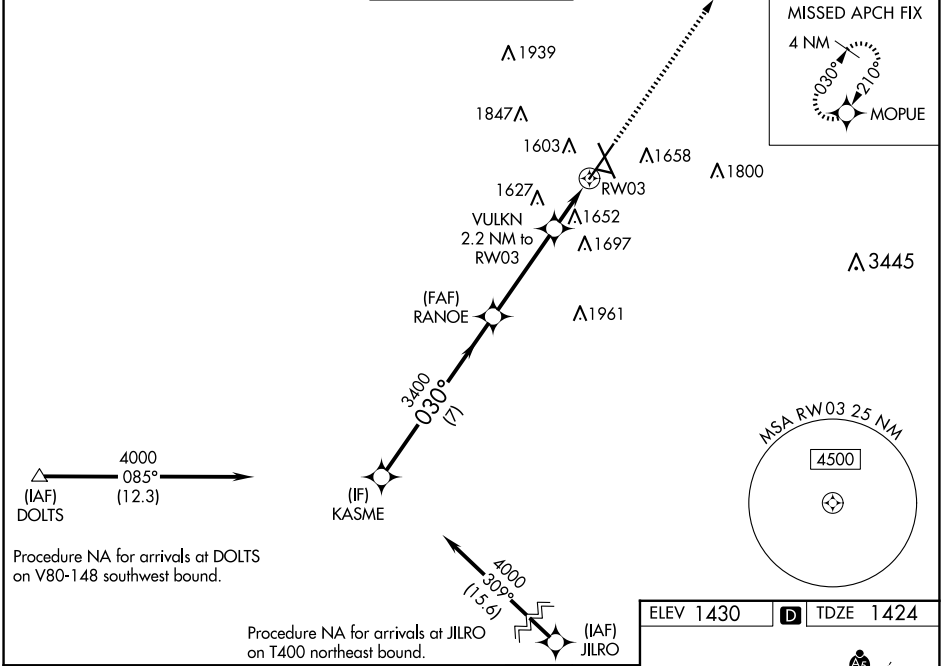
WAAS CH 97722	APP CRS 030°	Rwy Idg TDZE Apt Elev	8999 1424 1430
-------------------------	------------------------	-----------------------------	---

RNAV (GPS) RWY 3

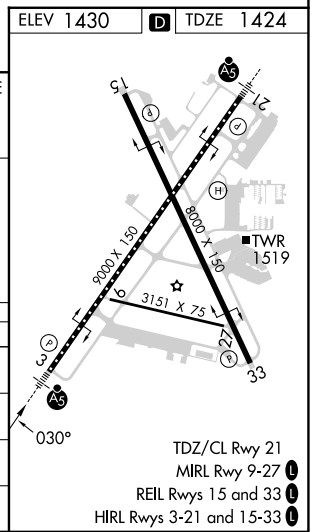
JOE FOSS FLD (FSD)

RNP APCH - GPS.		MALSR	MISSED APPROACH: Climb to 4000 direct MOEUE and hold.
<p>⚠ For uncompensated Baro-VNAV systems, LNAV/VNAV NA below -20°C or above 54°C. For inop ALS, increase LNAV/VNAV all Cats visibility to RVR 4500 and LNAV Cats C/D visibility to 1$\frac{1}{2}$ SM.</p> <p>ASR</p> <p>❄ -31°C</p>			

ATIS 126.6	SIoux FALLS APP CON* 125.8 284.725	SIoux FALLS TOWER* 118.3 (CTAF) 0 257.8	GND CON 121.9 348.6	UNICOM 122.95
----------------------	--	---	-------------------------------	-------------------------



CATEGORY	A	B	C	D
LPV DA	1674/24		250 (300- $\frac{1}{2}$)	
LNAV/VNAV DA	1741/24		317 (400- $\frac{1}{2}$)	
LNAV MDA	1920/24	496 (500- $\frac{1}{2}$)	1920/50	496 (500-1)
CIRCLING	1980-1	550 (600-1)	2060-1 $\frac{3}{4}$ 630 (700-1 $\frac{3}{4}$)	2200-2 $\frac{1}{2}$ 770 (800-2 $\frac{1}{2}$)



NC-1, 20 FEB 2025 to 20 MAR 2025

NC-1, 20 FEB 2025 to 20 MAR 2025