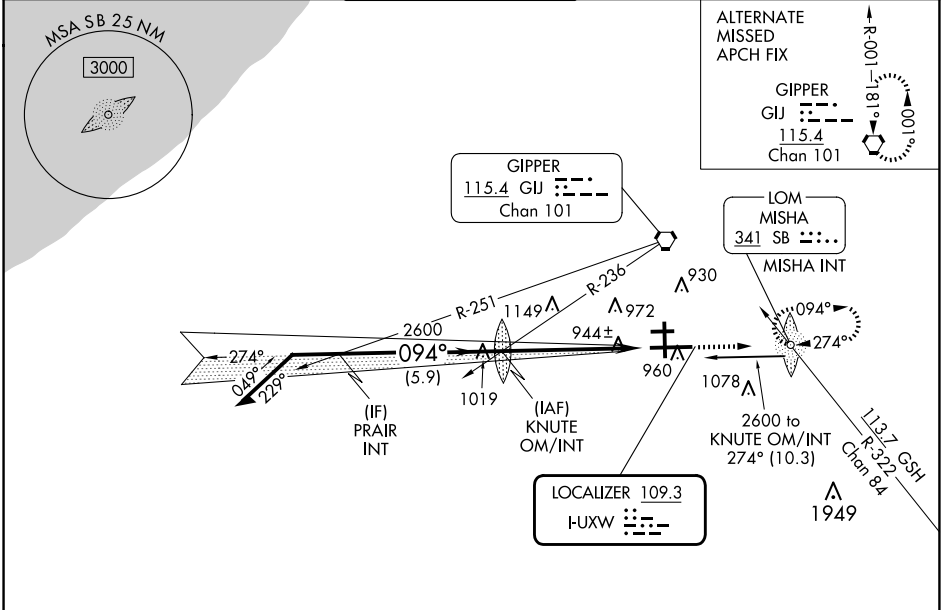


LOC I-UXW 109.3	APP CRS 094°	Rwy Idg 8412 TDZE 790 Apt Elev 798
---------------------------	------------------------	---

ILS or LOC RWY 9R

SOUTH BEND INTL (SBN)

ADF required. ▼ Rwy 9R helicopter visibility reduction below 3/4 SM NA. ▲ For inop ALS, increase S-ILS 9R visibility all Cats to RVR 5500, increase S-LOC 9R Cats C/D visibility to RVR 6000. Circling Rwy 27R NA at night.		MALSF 	MISSED APPROACH: Climb to 3000 direct MISHA LOM/INT and hold, continue climb-in-hold to 3000.	
ATIS 120.675	SOUTH BEND APP CON* 118.55 257.8	SOUTH BEND TOWER* 135.675 (CTAF) 257.8	GND CON 121.7	CLNC DEL 121.9



ELEV 798 TDZE 790	
CATEGORY	A B C D
S-ILS 9R	1135/40 345 (400-3/4)
S-LOC 9R	1200/40 410 (500-3/4) 1200/50 410 (500-1)
CIRCLING	1280-1 482 (500-1) 1440-1 3/4 642 (700-1 3/4) 1500-2 1/4 702 (800-2 1/4)
HIRL Rwy 9R-27L MIRL Rwy 18-36 MIRL Rwy 9L-27R FAF to MAP 5.3 NM Knots: 60 90 120 150 180 Min:Sec: 5:18 3:32 2:39 2:07 1:46	

EC-2, 20 FEB 2025 to 20 MAR 2025

EC-2, 20 FEB 2025 to 20 MAR 2025