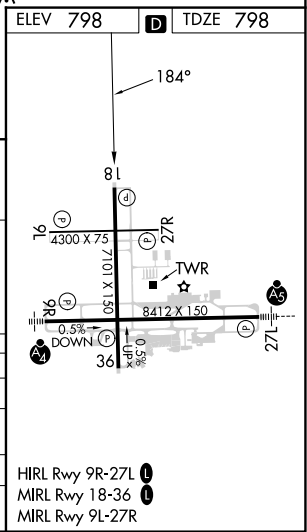
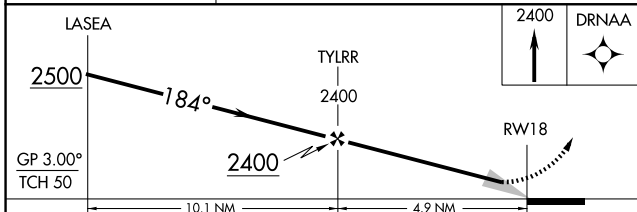
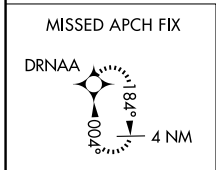
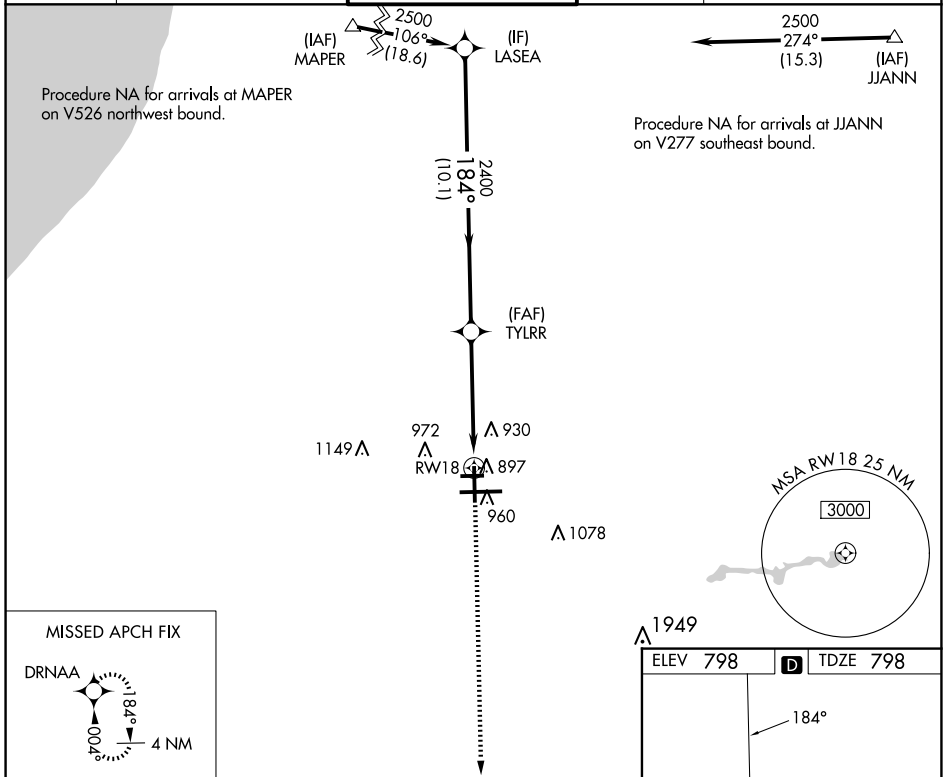


WAAS CH <b>73021</b> <b>W18A</b>	APP CRS <b>184°</b>	Rwy Idg TDZE Apt Elev	<b>7101</b> <b>798</b> <b>798</b>
--	------------------------	-----------------------------	---

# RNAV (GPS) RWY 18

SOUTH BEND INTL (SBN)

RNP APCH - GPS.		MISSED APPROACH: Climb to 2400 direct DRNAA and hold.		
<p><b>▼</b> Circling to Rwy 27R NA at night. For uncompensated Baro-VNAV systems, LNAV/VNAV NA below -19°C or above 54°C.</p> <p><b>▲</b></p>				
ATIS <b>120.675</b>	SOUTH BEND APP CON * <b>118.55 257.8</b>	SOUTH BEND TOWER * <b>135.675 (CTAF) 0 257.8</b>	GND CON <b>121.7</b>	CLNC DEL <b>121.9</b>



CATEGORY	A	B	C	D
LPV DA		1048-3/4	250 (300-3/4)	
LNAV/VNAV DA		1057-3/4	259 (300-3/4)	
LNAV MDA		1160-1	362 (400-1)	
<b>C</b> CIRCLING	1280-1	482 (500-1)	1440-1 3/4 642 (700-1 3/4)	1500-2 1/4 702 (800-2 1/4)

EC-2, 20 FEB 2025 to 20 MAR 2025

EC-2, 20 FEB 2025 to 20 MAR 2025