

| | | | |
|--|------------------------|---|-------------|
| WAAS CH 97311 W36A | APP CRS 360° | Rwy Idg TDZE 224 Apt Elev 224 | 6015 |
|--|------------------------|---|-------------|

RNAV (GPS) RWY 36

STUTTGART MUNI CARL HUMPHREY FLD (SGT)

RNP APCH

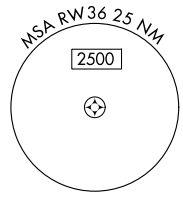
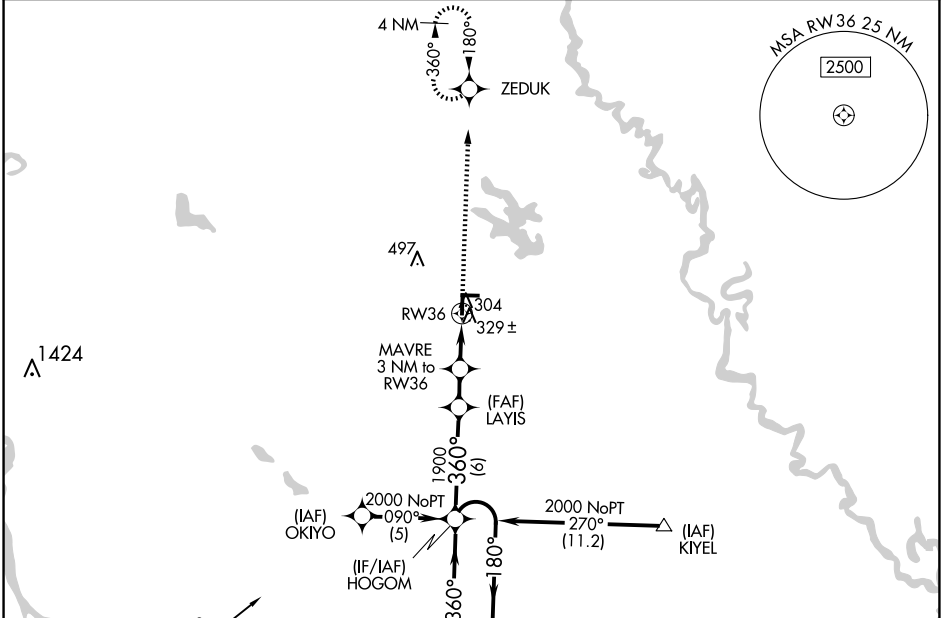
When local altimeter setting not received, use Bill and Hillary Clinton Nil/Adams Fld altimeter setting; increase LPV DA to 556 and all visibilities 1/2 SM; increase all MDAs 100 feet and visibility Cats C and D 1/4 SM. For Inop MALSF when using Bill and Hillary Clinton Nil/Adams Fld altimeter setting, increase LPV all Cats visibility to 1 1/2 mile. VDP NA when using Bill and Hillary Clinton Nil/Adams Fld altimeter setting.

MALSF



MISSED APPROACH:
Climb to 2000 direct ZEDUK and hold.

| | | | |
|----------------------------|---|---------------------------|-------------------------------|
| AWOS-3PT 119.025 | LITTLE ROCK APP CON 135.4 353.6 | CLINC DEL 123.7 | UNICOM 122.8 (CTAF) |
|----------------------------|---|---------------------------|-------------------------------|

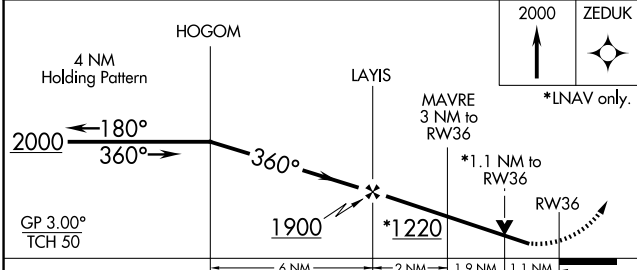
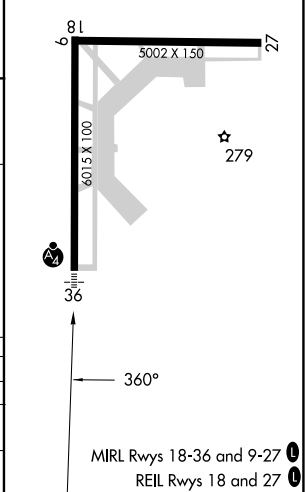


SC-1, 20 FEB 2025 to 20 MAR 2025

SC-1, 20 FEB 2025 to 20 MAR 2025



| | |
|----------|----------|
| ELEV 224 | TDZE 224 |
|----------|----------|



| | | | | |
|----------|----------------------|----------------------|------------------------------|--------------------------|
| CATEGORY | A | B | C | D |
| LPV DA | | 474-3/4 | 250 (300-3/4) | |
| RNAV MDA | 620-3/4 | 396 (400-3/4) | | 620-1/4 396 (400-1/4) |
| CIRCLING | 660-1 436 (500-1) | 680-1 456 (500-1) | 760-1 1/2 536 (600-1 1/2) | 860-2 636 (700-2) |

MIRL Rwy 18-36 and 9-27
REIL Rwy 18 and 27