

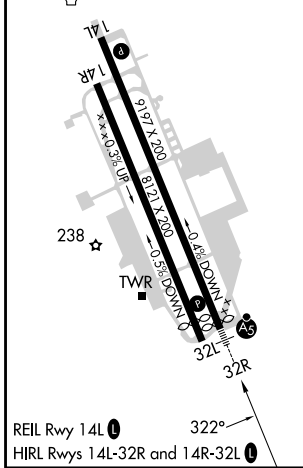
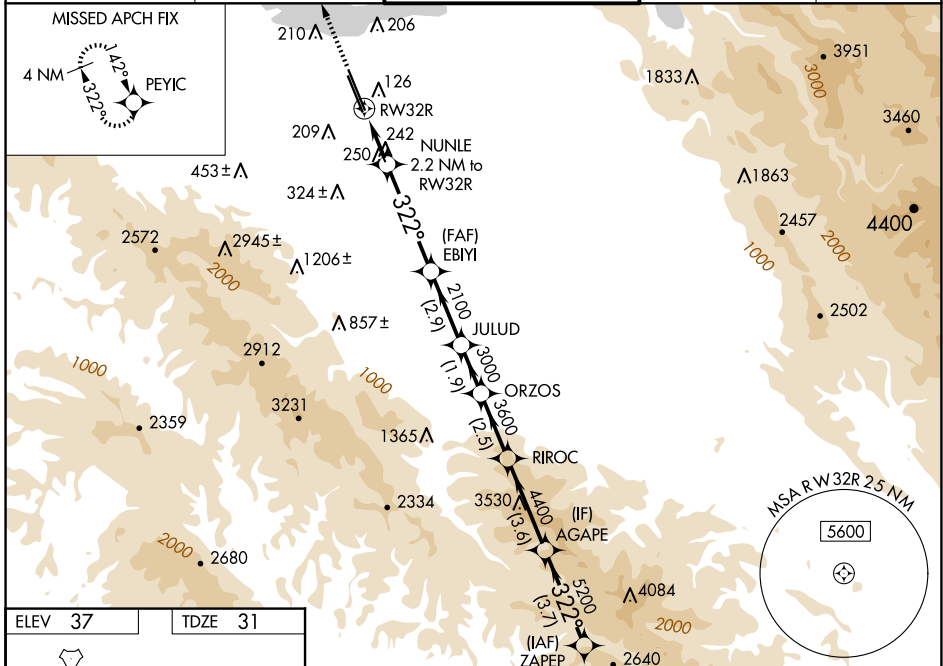
WAAS CH 53343 W32B	APP CRS 322°	Rwy Idg TDZE Apt Elev	9006 31 37
--	------------------------	-----------------------------	---------------------------------------

RNAV (GPS) RWY 32R

MOFFETT FEDERAL AIRFIELD (NTUQ)

RNP APCH - GPS.	MALSR 	MISSED APPROACH: Climb to 3200 direct PEYIC and hold.
<p>⚠ For uncompensated Baro-VNAV systems, LNAV/VNAV NA below -15°C or above 54°C. Rwy 32R helicopter visibility reduction below 3/4 SM NA. For inop ALS increase LPV all Cats visibility to 1 1/4 SM, LNAV/VNAV all Cats visibility to 1 3/8 SM and LNAV Cats A/B to 1 SM and Cats C/D visibility to 1 3/8 SM.</p>		

ATIS 124.175 283.0	NORCAL APP CON 120.1 290.25	MOFFETT TOWER* 119.55 (CTAF) 259.65	GND CON 121.85 278.95	CLNC DEL 296.75
------------------------------	---------------------------------------	--	---------------------------------	---------------------------



3200 PEYIC NUNLE 2.2 NM to RW32R 1.3 NM to RW32R RW32R EBIYI 2100 JULUD 3000 ORZOS 3600 RIROC 4400 AGAPE 5200 ZAPEP 5500 GP 3.00° TCH 57	1.3	0.9	4.1 NM	2.9 NM	1.9 NM	2.5 NM	3.6 NM	3.7 NM
	CATEGORY	A		B		C		D
LPV DA	452-3/4		421 (500-3/4)					
LNAV/VNAV DA	493-1		462 (500-1)					
LNAV MDA	500-3/4 469 (500-3/4)		500-1 469 (500-1)					
CIRCLING 	540-1 503 (600-1)		600-1 563 (600-1)		620-1 1/2 583 (600-1 1/2)		780-2 1/2 743 (800-2 1/2)	

SW-2, 20 FEB 2025 to 20 MAR 2025

SW-2, 20 FEB 2025 to 20 MAR 2025