

TACAN NUQ Chan 123 (117.6)	APP CRS 321°	Rwy ldg TDZE Apt Elev	7521 36 37
--	------------------------	-----------------------------	---------------------------------------

TACAN RWY 32L

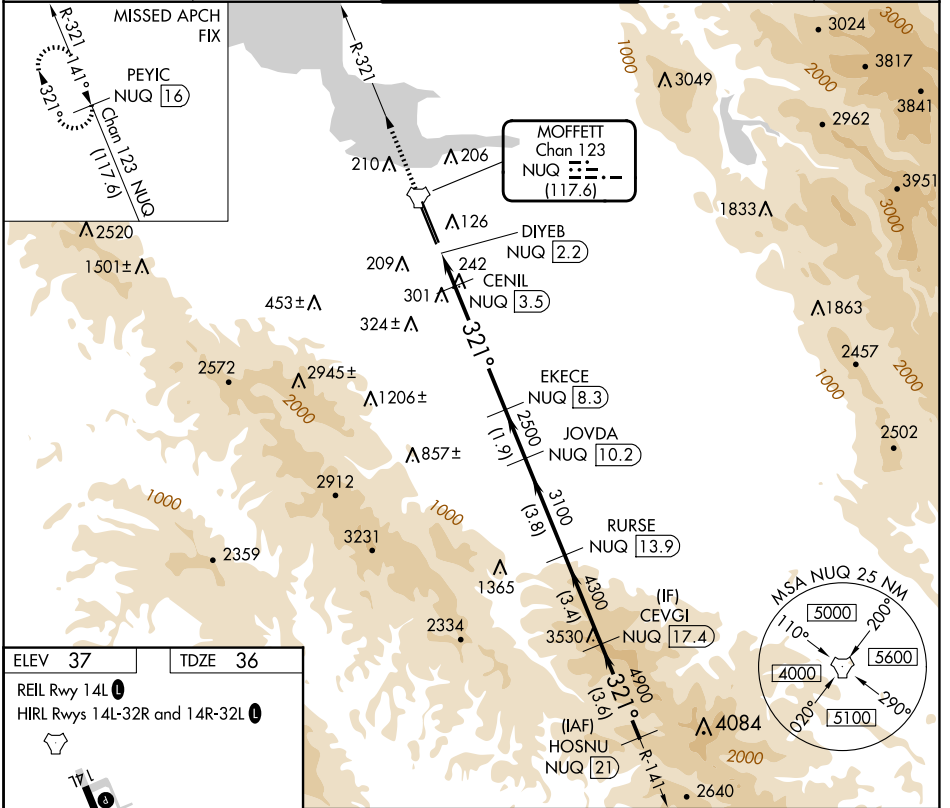
MOFFETT FEDERAL AIRFIELD (NUQ)

RADAR required for procedure entry.

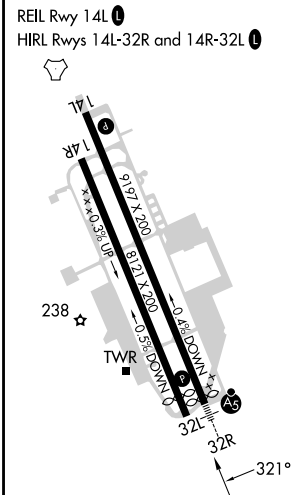
▲ Rwy 32L helicopter visibility reduction below ¾ SM NA.

MISSED APPROACH: Climb to 3200 on NUQ TACAN R-321 to PEYIC/16 DME and hold.

ATIS 124.175 283.0	NORCAL APP CON 120.1 290.25	MOFFETT TOWER ★ 119.55 (CTAF) 259.65	GND CON 121.85 278.95	CLNC DEL 296.75
------------------------------	---------------------------------------	--	---------------------------------	---------------------------



ELEV 37	TDZE 36
---------	---------



3200	PEYIC NUQ R-321 [16]	CENIL NUQ [3.5]	EKECE NUQ [8.3]	JOVDA NUQ [10.2]	RURSE NUQ [13.9]	CEVGI NUQ [17.4]	HOSNU NUQ [21]	
	DIYEB NUQ [2.2]							
		720	2500	3100	4300	4900	5500	
	0.5	0.8	0.5	4.8 NM	1.9 NM	3.8 NM	3.4 NM	3.6 NM
CATEGORY	A	B	C	D	E			
S-32L	560-1	524 (600-1)	560-1½		524 (600-1½)			
CIRCLING	560-1	600-1	620-1½	780-2½	940-3			
	523 (600-1)	563 (600-1)	583 (600-1½)	743 (800-2½)	903 (1000-3)			

SW-2, 20 FEB 2025 to 20 MAR 2025

SW-2, 20 FEB 2025 to 20 MAR 2025