

TACAN NUQ Chan 123 (117.6)	APP CRS 321°	Rwy ldg TDZE Apt Elev	9006 31 37
--	------------------------	-----------------------------	---------------------------------------

TACAN RWY 32R

MOFFETT FEDERAL AIRFIELD (NUQ)

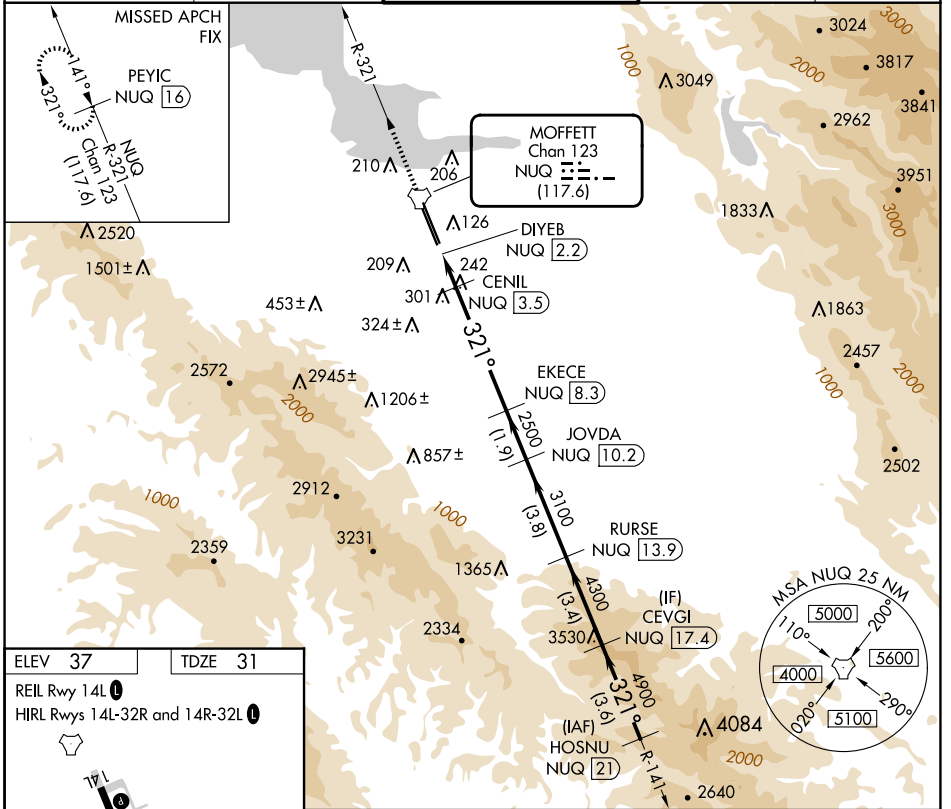
RADAR required for procedure entry.

For inop ALS, increase Cat E visibility to 1 1/2 SM.

MALS R

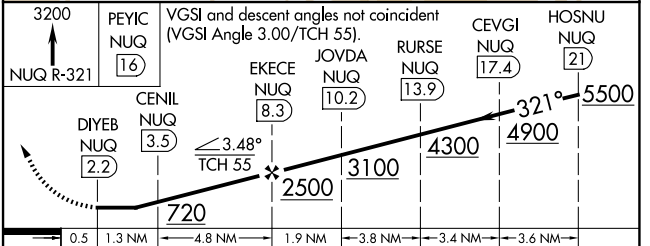
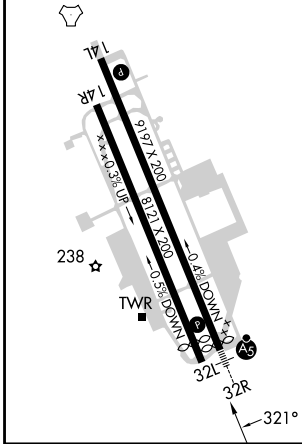
MISSED APPROACH: Climb to 3200 on NUQ TACAN R-321 to PEYIC/16 DME and hold.

ATIS 124.175 283.0	NORCAL APP CON 120.1 290.25	MOFFETT TOWER ★ 119.55 (CTAF) 259.65	GND CON 121.85 278.95	CLNC DEL 296.75
------------------------------	---------------------------------------	--	---------------------------------	---------------------------



ELEV 37	TDZE 31
---------	---------

REIL Rwy 14L
HIRL Rws 14L-32R and 14R-32L



CATEGORY	A	B	C	D	E
S-32R	560-1/2	529 (600-1/2)	560-1	529 (600-1)	
<input checked="" type="checkbox"/> CIRCLING	560-1 523 (600-1)	600-1 563 (600-1)	620-1/2 583 (600-1/2)	780-2/2 743 (800-2/2)	940-3 903 (1000-3)

SW-2, 20 FEB 2025 to 20 MAR 2025

SW-2, 20 FEB 2025 to 20 MAR 2025