

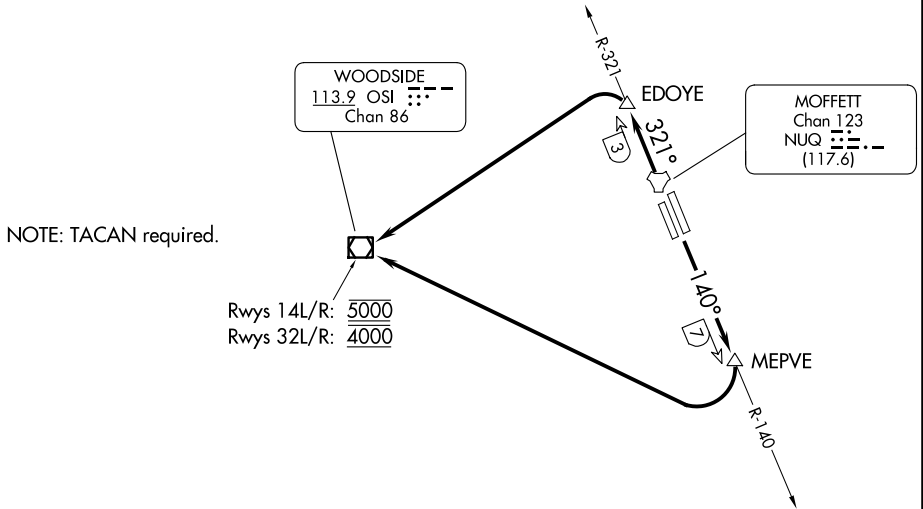
WOODSIDE TWO DEPARTURE

AL-410 (FAA)

MOFFETT FEDERAL AIRFIELD (NUQ)
MOUNTAIN VIEW, CALIFORNIA

ATIS
124.175 283.0
CLNC DEL
296.75
GND CON
121.85 278.95
MOFFETT TOWER★
119.55 (CTAF) 259.65
NORCAL DEP CON
121.3 270.35

**TOP ALTITUDE:
ASSIGNED BY ATC**



NOTE: TACAN required.

Rwys 14L/R: 5000
Rwys 32L/R: 4000

TAKEOFF MINIMUMS

Rwys 14L/R: Standard with minimum climb of 402' per NM to 5000.
Rwy 32R: Standard with minimum climb of 250' per NM to 4000.
Rwy 32L: Standard with minimum climb of 246' per NM to 4000.

NOTE: Chart not to scale.

DEPARTURE ROUTE DESCRIPTION

TAKEOFF RUNWAYS 14L/R: Climb via NUQ R-140 to MEPVE/NUQ 7 DME, then right turn direct to cross OSI VOR/DME at 5000, thence

TAKEOFF RUNWAYS 32L/R: Climb via NUQ R-321 to EDOYE/NUQ 3 DME, then turn left direct to cross OSI VOR/DME at 4000, thence

. . . . via RADAR vectors or assigned route.

WOODSIDE TWO DEPARTURE

SW-2, 20 FEB 2025 to 20 MAR 2025

SW-2, 20 FEB 2025 to 20 MAR 2025