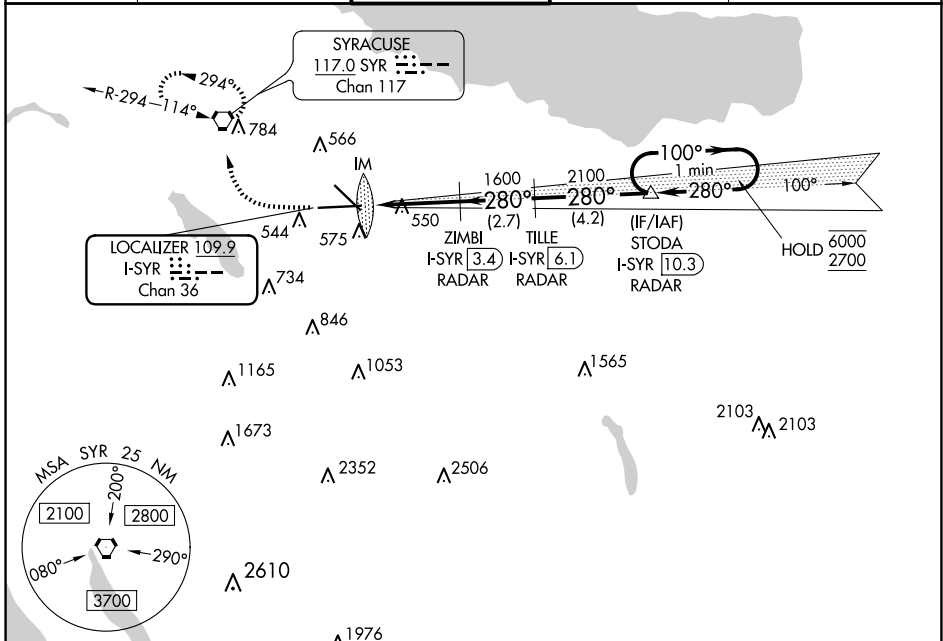


LOC/DME I-SYR <b>109.9</b> Chan <b>36</b>	APP CRS <b>280°</b>	Rwy Idg TDZE Apt Elev	<b>9014</b> <b>413</b> <b>421</b>
---	------------------------	-----------------------------	---

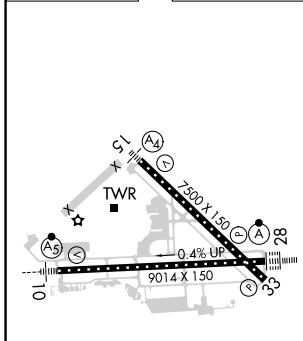
**ILS RWY 28 (CAT II)**  
SYRACUSE HANCOCK INTL (SYR)

DME or RADAR required.		ALSF-2	MISSED APPROACH: Climb to 1100 then climbing right turn to 3000 direct SYR VORTAC and hold, continue climb-in-hold to 3000.
<p>▼ RVR 1000 authorized with specific OPSEC, MSPEC, or LOA approval and use of autoland or HUD to touchdown.</p>			

ATIS <b>124.225</b>	SYRACUSE APP CON <b>126.125 269.125</b>	SYRACUSE TOWER <b>120.3 239.0</b>	GND CON <b>121.7 348.6</b>	CLNC DEL <b>125.05 257.775</b>
------------------------	--	--------------------------------------	-------------------------------	-----------------------------------



ELEV 421	<b>D</b>	TDZE 413
----------	----------	----------



1100	3000	SYR	
↑	↷	◻	
ZIMBI I-SYR 3.4 RADAR		TILLE I-SYR 6.1 RADAR	STODA I-SYR 10.3 RADAR
1600		2100	100° → 6000
↙ ↘		↖ ↗	← 280° 2700
IM 512			GS 3.00° TCH 60
3.6 NM		2.7 NM	4.2 NM

CATEGORY	A	B	C	D
S-ILS 28	RA 100/12		100 DA	513

**CATEGORY II ILS - SPECIAL AIRCREW & AIRCRAFT CERTIFICATION REQUIRED**

TDZ/CL Rwy 28  
HIRL Rwy 10-28 and 15-33

NE-2, 20 FEB 2025 to 20 MAR 2025

NE-2, 20 FEB 2025 to 20 MAR 2025