

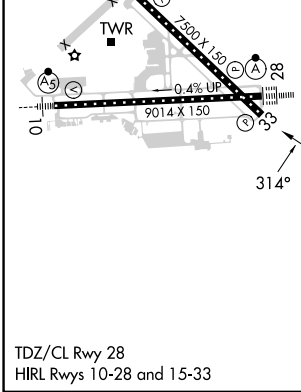
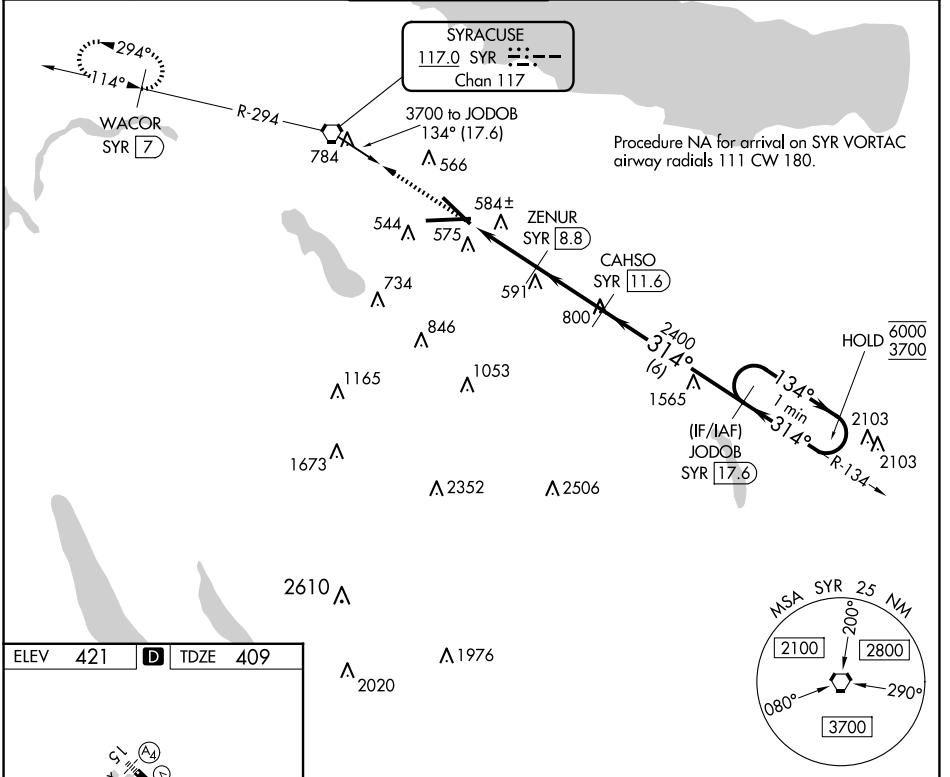
VORTAC SYR 117.0 Chan 117	APP CRS 314°	Rwy ldg TDZE 7500 409 Apt Elev 421
--	------------------------	---

TACAN RWY 33

SYRACUSE HANCOCK INTL (SYR)

▼ Rwy 33 helicopter visibility reduction below 3/4 SM NA.
▲ MISSED APPROACH: Climb to 3000 direct SYR VORTAC and on SYR VORTAC R-294 to WACOR/7 DME and hold.

ATIS 124.225	SYRACUSE APP CON 126.125 269.125	SYRACUSE TOWER 120.3 239.0	GND CON 121.7 348.6	CLNC DEL 125.05 257.775
------------------------	--	--------------------------------------	-------------------------------	-----------------------------------



ELEV 421	D	TDZE 409		
3000	SYR R-294	WACOR SYR [7]	JODOB SYR [17.6]	One Minute Holding Pattern
SYR [7.1]	ZENUR SYR [8.8]	CAHSO SYR [11.6]	1380	2400
SYR [5.9]	3.19° TCH 53	2400	134°	6000
1.2	1.7 NM	2.8 NM	6 NM	3700
CATEGORY	A	B	C	D
S-33	840/55	431 (500-1)	840-1¼	431 (500-1¼)
C CIRCLING	900-1 479 (500-1)	920-1 499 (500-1)	1020-1½ 599 (600-1½)	1180-2½ 759 (800-2½)

NE-2, 20 FEB 2025 to 20 MAR 2025

NE-2, 20 FEB 2025 to 20 MAR 2025