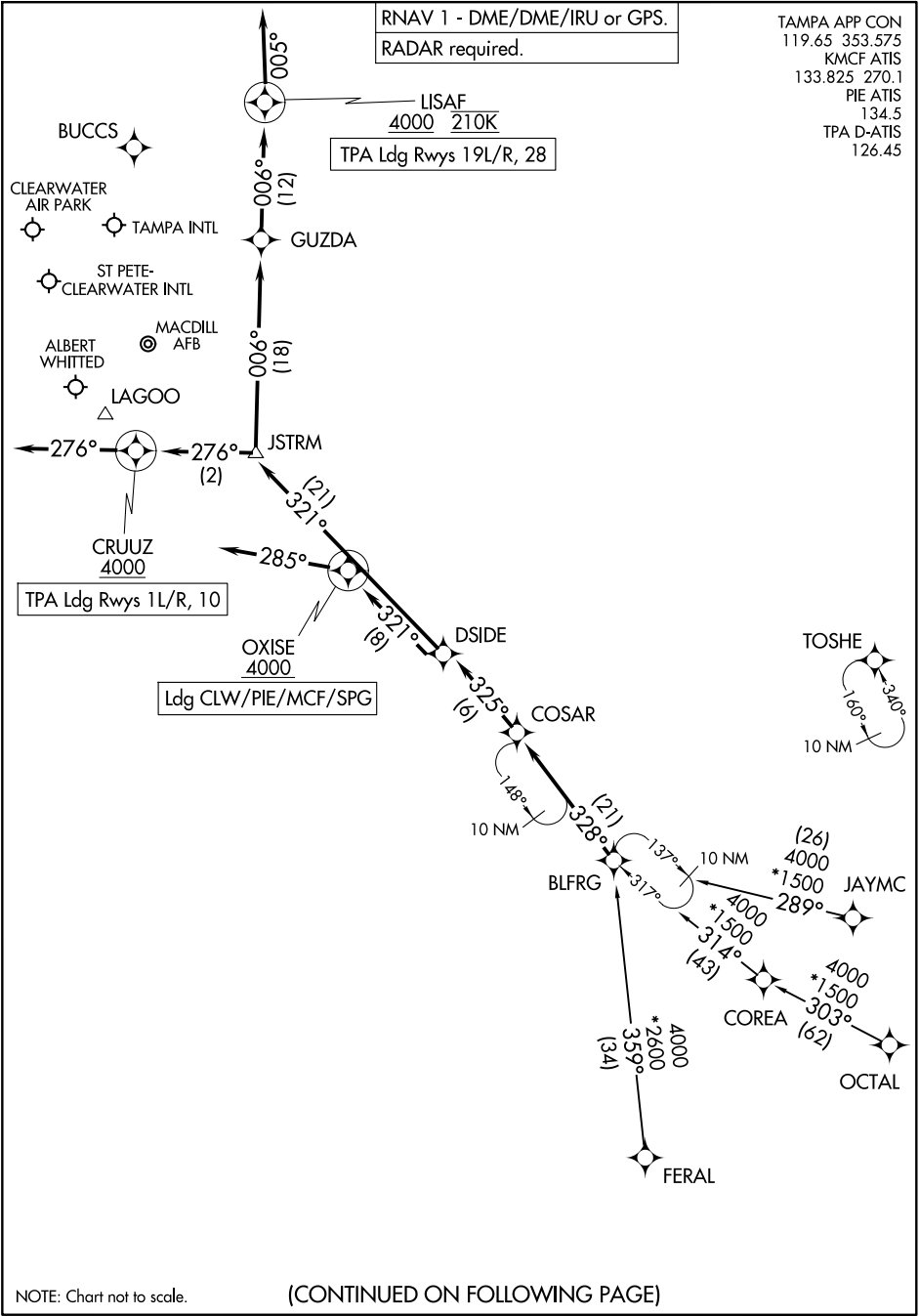


BLFRG THREE ARRIVAL (RNAV)

TAMPA, FLORIDA



SE-3, 20 FEB 2025 to 20 MAR 2025

SE-3, 20 FEB 2025 to 20 MAR 2025

NOTE: Chart not to scale.

(CONTINUED ON FOLLOWING PAGE)

BLFRG THREE ARRIVAL (RNAV)

TAMPA, FLORIDA

ARRIVAL ROUTE DESCRIPTION

COREA TRANSITION (COREA.BLFRG3)

FERAL TRANSITION (FERAL.BLFRG3)

JAYMC TRANSITION (JAYMC.BLFRG3)

OCTAL TRANSITION (OCTAL.BLFRG3)

TPA: From BLFRG on track 328° to COSAR, then on track 325° to DSIDE.

LANDING TPA RUNWAYS 1L/R, 10: From DSIDE on track 321° to JSTRM, then on track 276° to cross CRUUZ at or above 4000, then on track 276°. Expect RADAR vectors to final approach course.

LANDING TPA RUNWAYS 19L/R, 28: From DSIDE on track 321° to JSTRM, then on track 006° to GUZDA, then on track 006° to cross LISAF at or above 4000 and at 210K, then on track 005°. Expect RADAR vectors to final approach course.

LANDING CLW/PIE/MCF/SPG: From BLFRG on track 328° to COSAR, then on track 325° to DSIDE, then on track 321° to cross OXISE at or above 4000, then on track 285°. Expect RADAR vectors to final approach course.

SE-3, 20 FEB 2025 to 20 MAR 2025

SE-3, 20 FEB 2025 to 20 MAR 2025