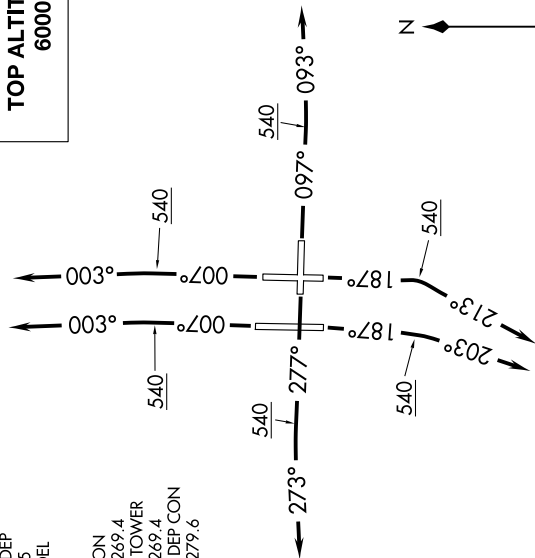


# CROWD EIGHT DEPARTURE (RNAV)

SE-3, 20 FEB 2025 to 20 MAR 2025

D-ATIS DEP  
128.475  
CLNC DEL  
133.6  
CPDLC  
GND CON  
121.7 269.4  
TAMPA TOWER  
119.5 269.4  
TAMPA DEP CON  
135.5 279.6

**TOP ALTITUDE:**  
**6000**



NOTE: RNAV 1.  
NOTE: Jets only.  
NOTE: RADAR required.  
NOTE: DME/DME/IRU or GPS required.

### TAKEOFF MINIMUMS:

Rwy 1L/R: Standard with minimum climb of 500' per NM to 540.  
Rwy 10: Standard with minimum climb of 500' per NM to 900.  
Rwy 19L: Standard with minimum climb of 500' per NM to 760.  
Rwy 19R: Standard with minimum climb of 500' per NM to 600.  
Rwy 28: Standard with minimum climb of 500' per NM to 600.

### DEPARTURE ROUTE DESCRIPTION

**TAKEOFF RWY 1L/R:** Climb on heading 007° to 540, then climb to assigned altitude on heading 003° or as assigned by ATC, thence. . . .

**TAKEOFF RWY 10:** Climb on heading 097° to 540, then climb to assigned altitude on heading 093° or as assigned by ATC, thence. . . .

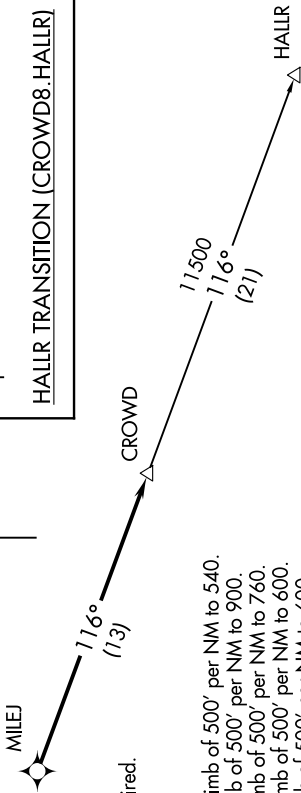
**TAKEOFF RWY 19L:** Climb on heading 187° to 540, then climb to assigned altitude on heading 213° or as assigned by ATC, thence. . . .

**TAKEOFF RWY 19R:** Climb on heading 187° to 540, then climb to assigned altitude on heading 203° or as assigned by ATC, thence. . . .

**TAKEOFF RWY 28:** Climb on heading 277° to 540, then climb to assigned altitude on heading 273° or as assigned by ATC, thence. . . .

. . . . expect RADAR vectors to MILEJ, then on track 116° to CROWD. Maintain 6000 or as assigned by ATC, expect clearance to filed altitude within ten (10) minutes after departure.

### HALLR TRANSITION (CROWD8.HALLR)



NOTE: Chart not to scale.

# CROWD EIGHT DEPARTURE (RNAV)

(CROWD8.CROWD) 03JAN19

SE-3, 20 FEB 2025 to 20 MAR 2025