

TAMPA, FLORIDA

AL-416 (FAA)

24305

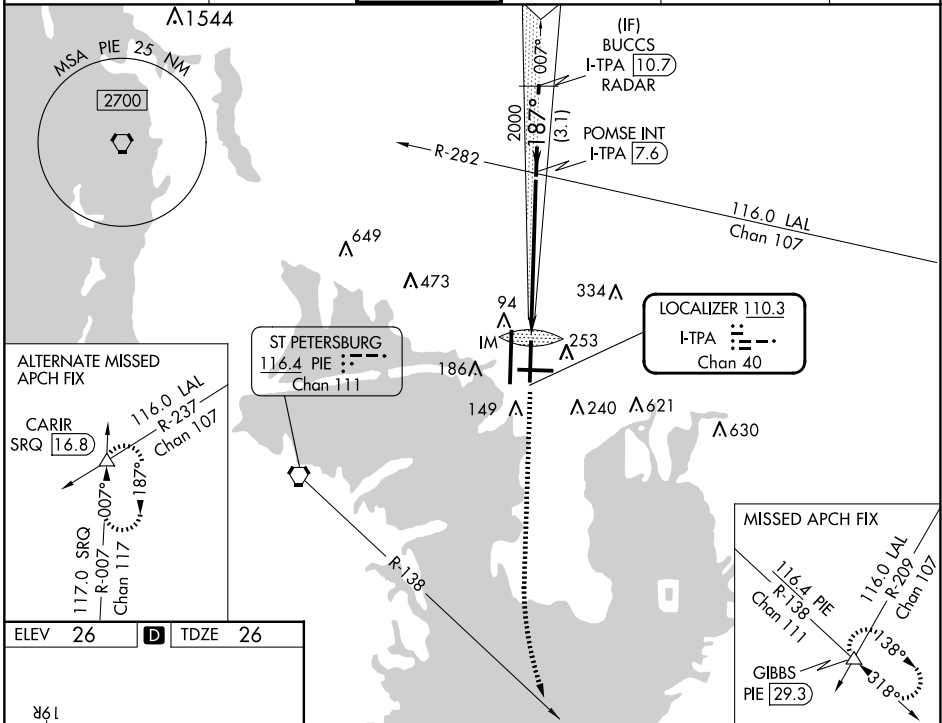
LOC/DME I-TPA 110.3 Chan 40	APP CRS 187°	Rwy Idg 8300 TDZE 26 Apt Elev 26
---	------------------------	---

ILS RWY 19L (SA CAT I)

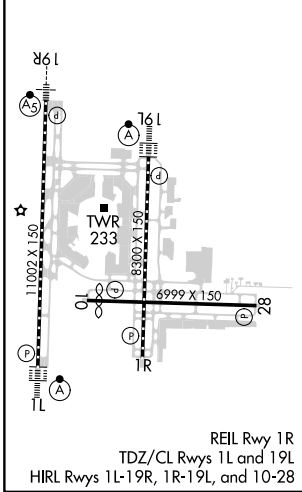
TAMPA INTL (TPA)

RADAR required for procedure entry.		ALSIF-2 	MISSED APPROACH: Climb to 600 then climbing left turn to 2800 on heading 160° and on PIE VORTAC R-138 to GIBBS INT/PIE 29.3 DME and hold.
Simultaneous approach authorized. Requires specific OPSPEC, MSPEC, or LOA approval.			

ARR 126.45	D-ATIS 128.475	DEP 118.5	TAMPA APP CON 307.175	TAMPA TOWER 119.5 269.4	GND CON 121.7 269.4	CLNC DEL 133.6	CPDLC
----------------------	--------------------------	---------------------	---------------------------------	-----------------------------------	-------------------------------	--------------------------	-------



ELEV 26	D	TDZE 26
---------	----------	---------



600	2800	PIE R-138	GIBBS	VGSI and ILS glidepath not coincident (VGSI Angle 3.00/TCH 61).
IM		POMSE INT I-TPA 7.6	BUCCS I-TPA 110.7 RADAR	
2000		2000	3000	GS 3.00° TCH 51
1048'	6 NM	3.1 NM		
CATEGORY	A	B	C	D
S-ILS 19L	RA 150/14		150	DA 176

SA CATEGORY I ILS- SPECIAL AIRCREW & AIRCRAFT CERTIFICATION REQUIRED

SE-3, 20 FEB 2025 to 20 MAR 2025

SE-3, 20 FEB 2025 to 20 MAR 2025

TAMPA, FLORIDA
Amdt 41 20APR23

27°59'N-82°32'W

TAMPA INTL (TPA)
ILS RWY 19L (SA CAT I)