

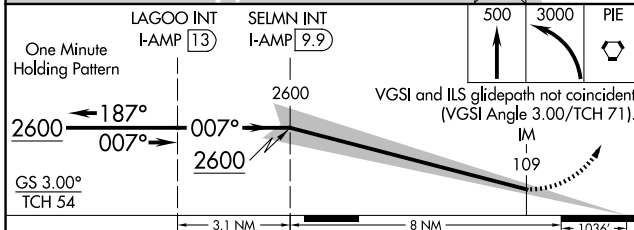
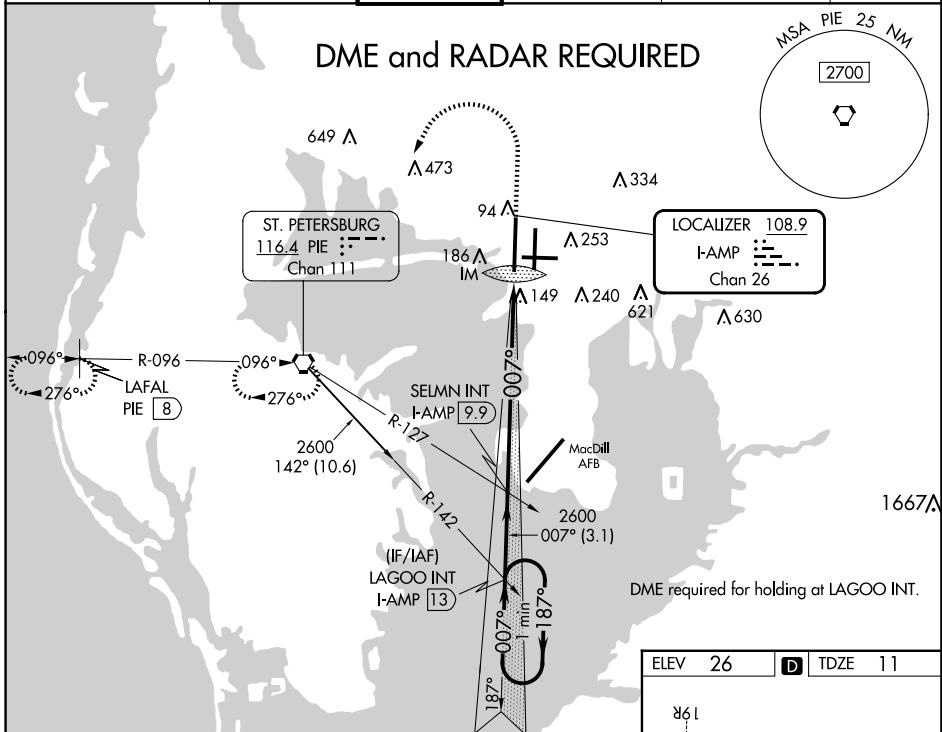
LOC/DME I-AMP 108.9 Chan 26	APP CRS 007°	Rwy Idg 10800 TDZE 11 Apt Elev 26
---	------------------------	--

ILS RWY 1L (CAT II & III)

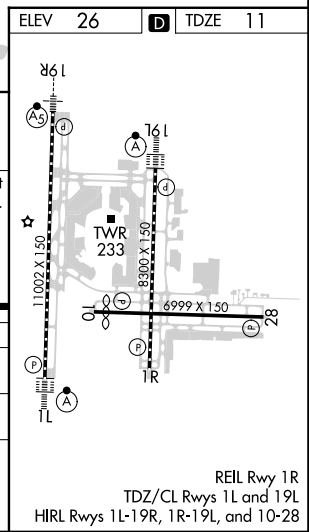
TAMPA INTL (TPA)

Simultaneous approach authorized.
 CAT II: RVR 1000 authorized with specific OPSPEC, MSPEC or LOA approval and use of autoland or HUD to touchdown.
 MISSED APPROACH: Climb to 500 then climbing left turn to 3000 direct PIE VORTAC and hold, continue climb-in-hold to 3000 (TACAN aircraft climb to 500 then climbing left turn to 4000 direct PIE VORTAC then on PIE VORTAC R-276 to LAFAL/PIE 8 DME and hold W, RT, 096 inbound)

ARR 126.45	D-ATIS 128.475	DEP 118.5 307.175	TAMPA APP CON 119.5 269.4	TAMPA TOWER 121.7 269.4	GND CON 121.7 269.4	CLNC DEL 133.6	CPDLC
----------------------	--------------------------	-----------------------------	-------------------------------------	-----------------------------------	-------------------------------	--------------------------	-------



CATEGORY	A	B	C	D
S-ILS 1L	CAT II RA 105/12 100 DA 111			
S-ILS 1L	CAT III RVR 06			



CATEGORY II & III ILS - SPECIAL AIRCREW & AIRCRAFT CERTIFICATIONS REQUIRED

SE-3, 20 FEB 2025 to 20 MAR 2025

SE-3, 20 FEB 2025 to 20 MAR 2025