

WAAS CH 50406 W01A	APP CRS 007°	Rwy Idg 10800 TDZE 11 Apt Elev 26
---------------------------------	------------------------	--

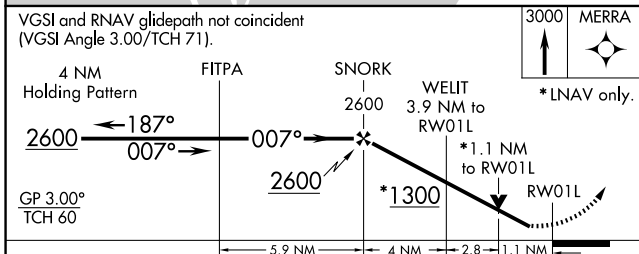
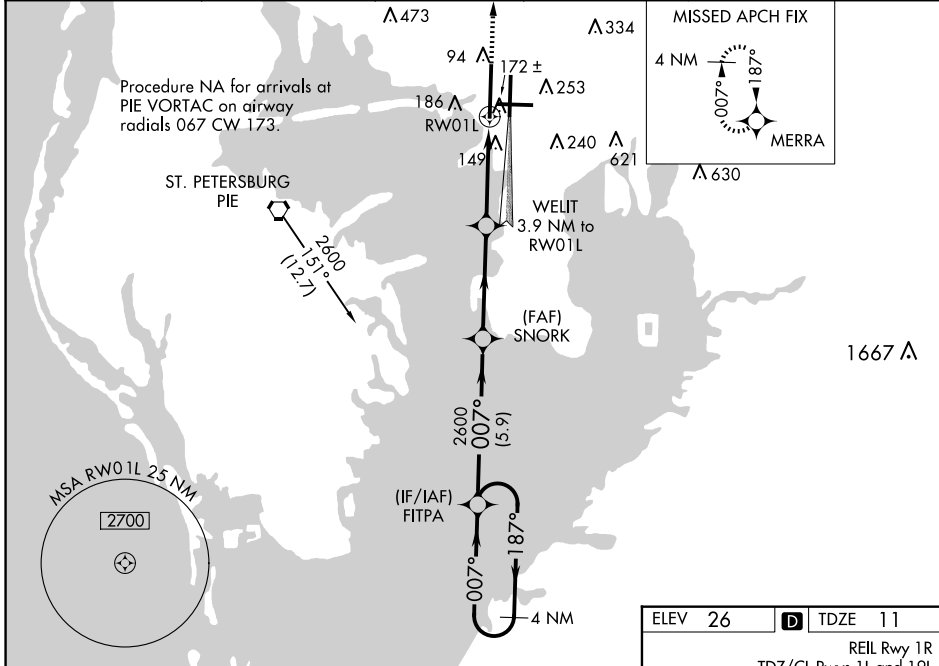
RNAV (GPS) RWY 1L

TAMPA INTL (TPA)

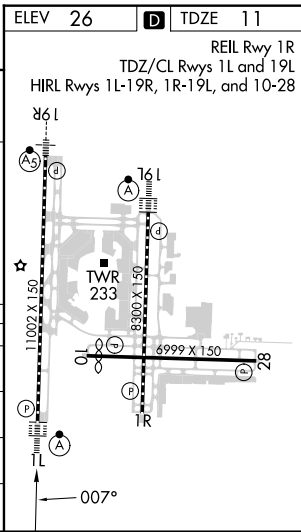
⚠ For uncompensated Baro-VNAV systems, LNAV/VNAV NA below -15°C (5°F) or above 43°C (109°F). DME/DME RNP-0.3 NA. For inop ALSF, increase LPV Cat E visibility to RVR 4000, LNAV/VNAV Cat E visibility to 1½ mile, and LNAV Cat E visibility to RVR 6000. Simultaneous approach authorized with Rwy 1R. LNAV procedure NA during simultaneous operations. Use of FD or AP providing RNAV track guidance required during simultaneous operations.

ALSF-2
MISSED APPROACH:
Climb to 3000 direct MERRA and hold.

ARR 126.45	D-ATIS 128.475	DEP 118.5 307.175	TAMPA APP CON 119.5 269.4	TAMPA TOWER 119.5 269.4	GND CON 121.7 269.4	CLNC DEL 133.6	CPDLC
----------------------	--------------------------	-----------------------------	-------------------------------------	-----------------------------------	-------------------------------	--------------------------	-------



CATEGORY	A	B	C	D	E
LPV DA		211/18	200 (200-½)		
LNAV/VNAV DA		431/45	420 (500-¾)		
LNAV MDA	440/24	429 (500-½)	440/40	429 (500-¾)	
CIRCLING	560-1	534 (600-1)	680-1¾ 654 (700-1¾)	980-3	954 (1000-3)



SE-3, 20 FEB 2025 to 20 MAR 2025

SE-3, 20 FEB 2025 to 20 MAR 2025