

VORTAC TXK <b>116.3</b> Chan 110	APP CRS <b>122°</b>	Rwy Idg <b>4559</b> TDZE <b>388</b> Apt Elev <b>390</b>
--	------------------------	---

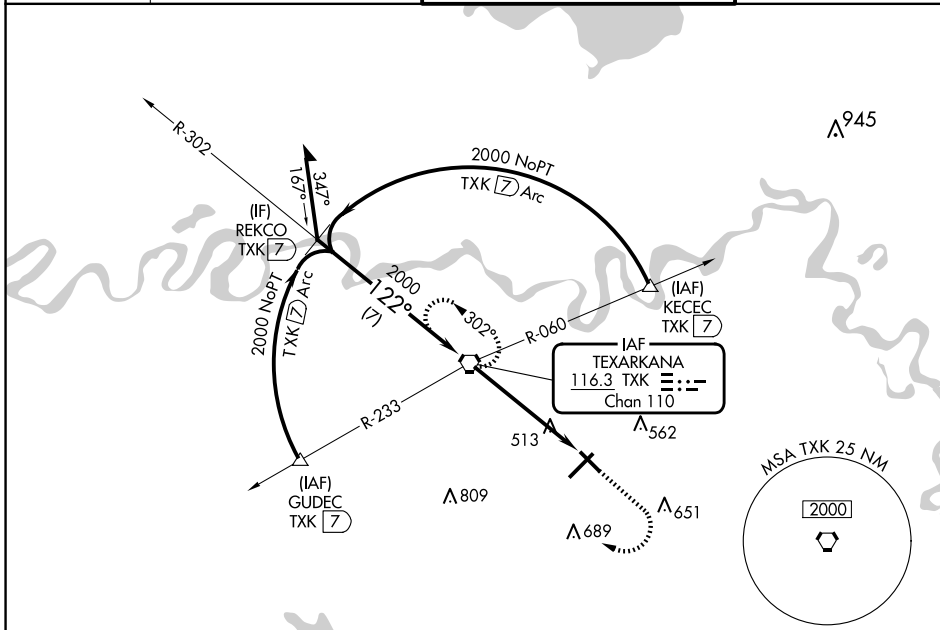
# VOR RWY 13

TEXARKANA RGNL-WEBB FLD (TXK)

**⚠** When local altimeter setting not received, use De Queen altimeter setting and increase all MDA 100 feet, increase S-13 and Cat C and D visibility  $\frac{1}{4}$  SM, and Circling Cat C and D visibility  $\frac{1}{4}$  SM. Visibility reduction by helicopters NA. VDP NA when using De Queen altimeter setting.

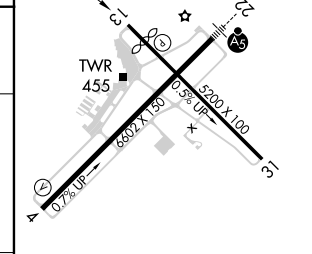
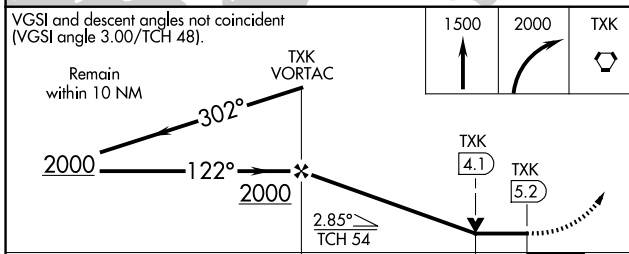
**MISSED APPROACH:** Climb to 1500 then climbing right turn to 2000 direct TXK VORTAC and hold.

ATIS <b>120.2</b>	FORT WORTH CENTER <b>123.925 269.475</b>	TEXARKANA TOWER* <b>123.875 (CTAF) 235.625</b>	GND CON <b>119.225</b>
----------------------	---	---	---------------------------



SC-1, 20 FEB 2025 to 20 MAR 2025

SC-1, 20 FEB 2025 to 20 MAR 2025



CATEGORY	A	B	C	D
S-13	780-1 430 (500-1)	392 (400-1)	780-1 $\frac{1}{8}$ 392 (400-1 $\frac{1}{8}$ )	780-1 $\frac{1}{4}$ 392 (400-1 $\frac{1}{4}$ )
CIRCLING	820-1 430 (500-1)	900-1 510 (600-1)	1000-1 $\frac{3}{4}$ 610 (700-1 $\frac{3}{4}$ )	1080-2 $\frac{1}{4}$ 690 (700-2 $\frac{1}{4}$ )

MIRL Rwy 13-31 **Ⓛ**  
HIRL Rwy 4-22 **Ⓛ**

FAF to MAP 5.2 NM

Knots	60	90	120	150	180
Min:Sec	5:12	3:28	2:36	2:05	1:44