

LOC/DME I-TYK	APP CRS	Rwy Idg	<b>7016</b>
<b>110.7</b>	<b>099°</b>	TDZE	<b>624</b>
Chan <b>44</b>		Apt Elev	<b>624</b>

# ILS or LOC RWY 10

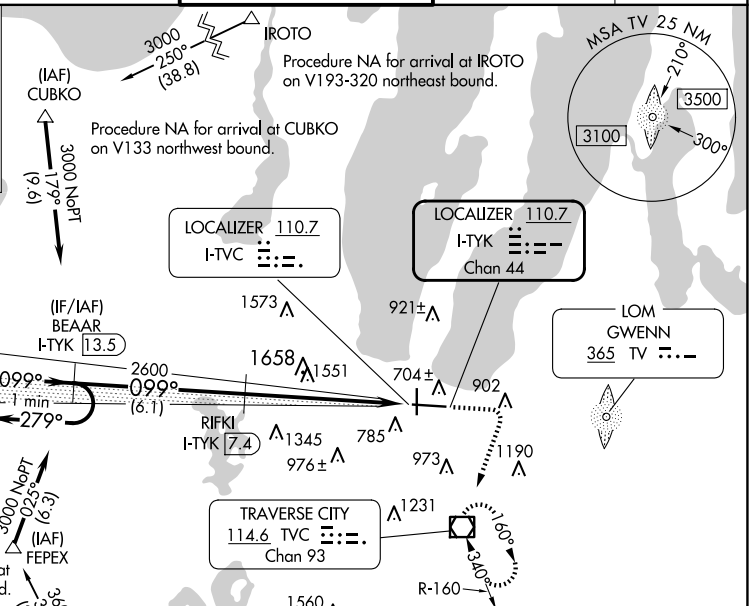
CHERRY CAPITAL (TVC)

RNP APCH - GPS. From BABBE, or IROTO, or FEPEX, or CUBKO.  
 DME required.  
 Rwy 10 helicopter visibility reduction below 3/4 SM NA.  
 For inop ALS, increase S-ILS 10 all Cats visibility to 3/8 SM.

MALSRL  
  
 MISSED APPROACH: Climb to 1400 then climbing right turn to 4000 direct TVC VOR/DME and hold, continue climb-in-hold to 4000.

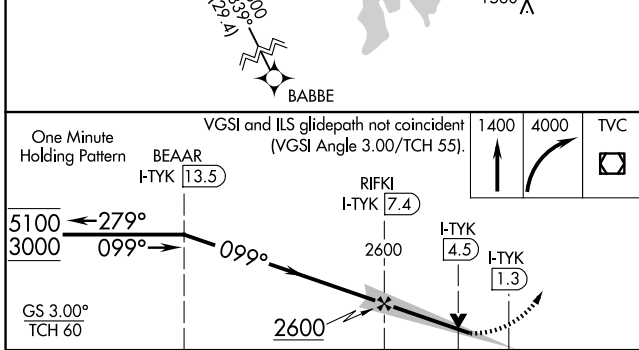
ATIS <b>119.175</b>	MINNEAPOLIS CENTER <b>132.9 338.3</b>	TRAVERSE CITY TOWER* <b>124.2 (CTAF) 348.6</b>	GND CON <b>121.8 348.6</b>	UNICOM <b>122.95</b>
------------------------	--	---	-------------------------------	-------------------------

ALTERNATE MISSED APCH FIX  
 GWENN  
 365 TV ---

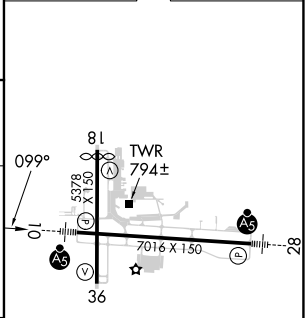


EC-1, 20 FEB 2025 to 20 MAR 2025

EC-1, 20 FEB 2025 to 20 MAR 2025



ELEV 624	TDZE 624
----------	----------



CATEGORY	A	B	C	D
S-ILS 10	917-3/4 293 (300-3/4)			
S-LOC 10	1700-3/4 1076 (1100-3/4)	1700-1 1076 (1100-1)	1700-2 1/2 1076 (1100-2 1/2)	
CIRCLING	1700-1 1/4 1076 (1100-1 1/4)	1700-1 1/2 1076 (1100-1 1/2)	1700-3 1076 (1100-3)	1720-3 1096 (1100-3)

- HIRL Rwy 10-28
- MIRL Rwy 18-36
- REIL Rwy 36