

WAAS CH <b>53733</b> <b>W36A</b>	APP CRS <b>005°</b>	Rwy Idg TDZE Apt Elev	<b>5108</b> <b>624</b> <b>624</b>
--	------------------------	-----------------------------	---

# RNAV (GPS) RWY 36

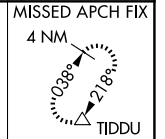
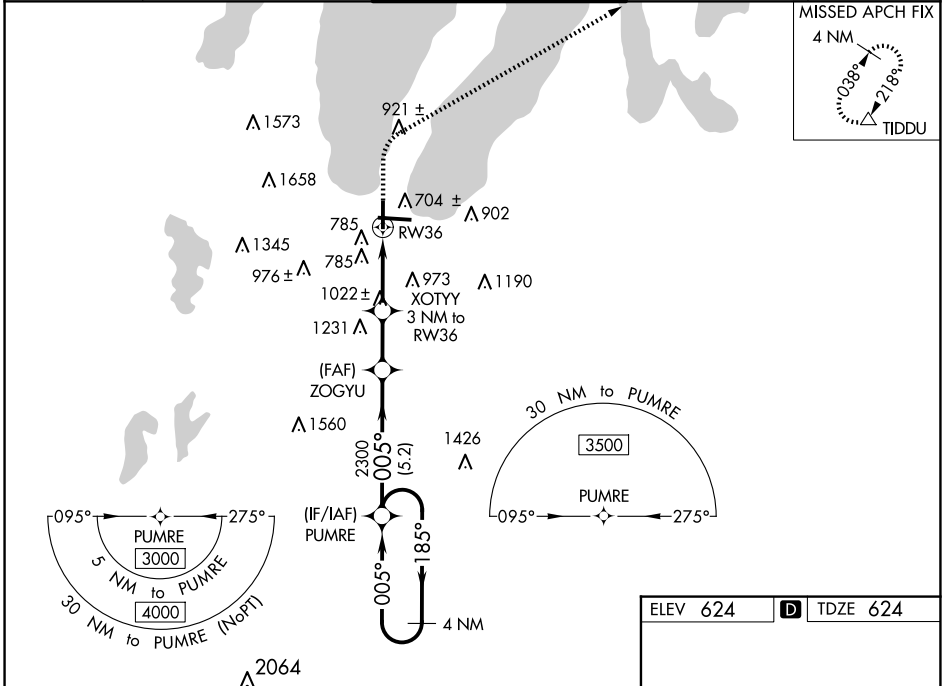
CHERRY CAPITAL (TVC)

RNP APCH - GPS.

**⚠** Baro-VNAV NA when using ACB altimeter setting. For uncompensated Baro-VNAV systems, LNAV/VNAV NA below -16°C or above 54°C. When local altimeter setting not received use ACB altimeter setting: increase all DA 51 feet and all MDA 60 feet, increase LNAV/VNAV all Cats and Circling Cat C visibilities ¼ SM, and increase LPV all Cats, LNAV Cat C/D and Circling Cat D visibilities ½ SM. Helicopter visibility reduction below ¾ SM NA.

**MISSED APPROACH:**  
Climb to 1400 then climbing right turn to 3000 direct TIDDU and hold.

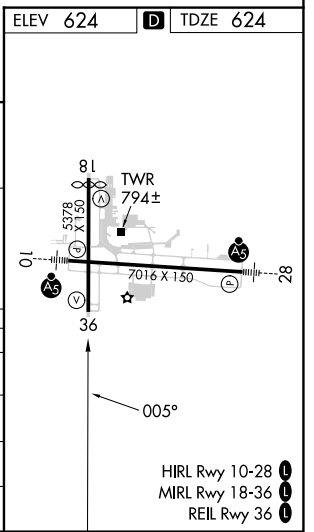
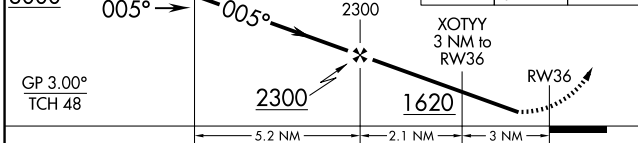
ATIS <b>119.175</b>	MINNEAPOLIS CENTER <b>132.9 338.3</b>	TRAVERSE CITY TOWER * <b>124.2(CTAF) 0 348.6</b>	GND CON <b>121.8 348.6</b>	UNICOM <b>122.95</b>
------------------------	--	---	-------------------------------	-------------------------



EC-1, 20 FEB 2025 to 20 MAR 2025

EC-1, 20 FEB 2025 to 20 MAR 2025

4 NM Holding Pattern	VGSI and RNAV glidepath not coincident (VGSI Angle 3.50/TCH 53).	1400	3000	TIDDU
----------------------	--	------	------	-------



CATEGORY	A	B	C	D
LPV DA		899-7/8	275 (300-7/8)	
LNAV/VNAV DA		1146-1¼	522 (600-1¼)	
LNAV MDA	1280-1	656 (700-1)	1280-17/8	656 (700-17/8)
<b>C</b> CIRCLING	1280-1	656 (700-1)	1500-2½ 876 (900-2½)	1720-3 1096 (1100-3)

- HIRL Rwy 10-28
- MIRL Rwy 18-36
- REIL Rwy 36