

HI-TACAN Z RWY 13

TACAN DMA Chan 123	APCH CRS 133°	Rwy Idg 13,645 TDZE 2615 Arprt Elev 2704
------------------------------	-------------------------	---

[USAF]

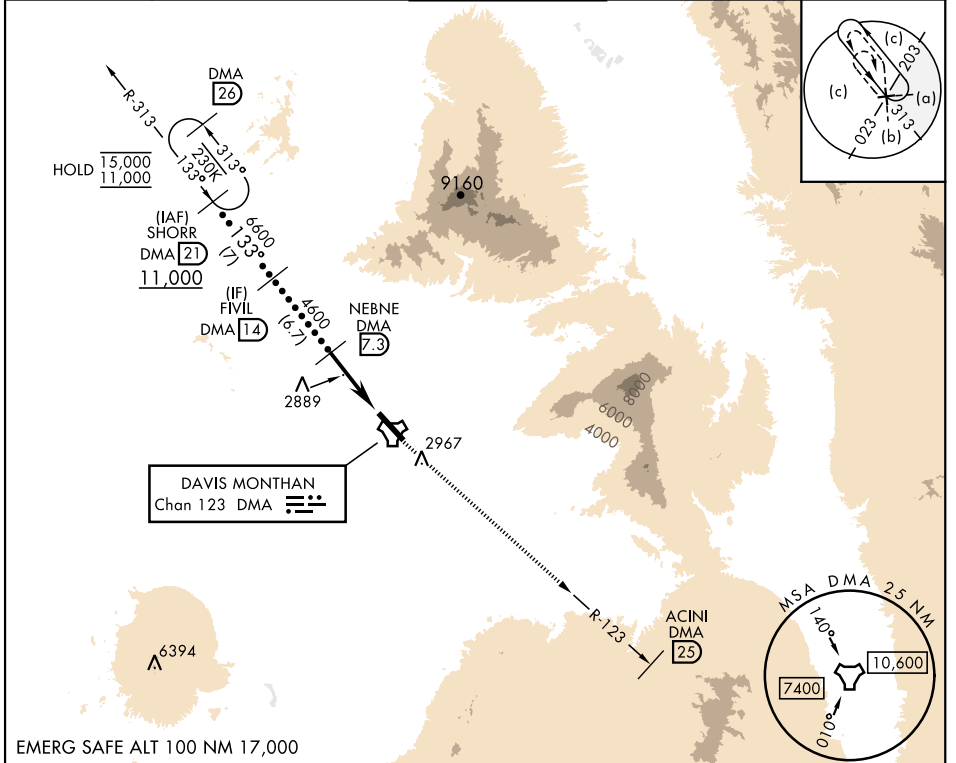
DAVIS-MONTHAN AFB (KDMA)

RNAV or RADAR required.

*Circling not authorized SW of Rwy 13-31.

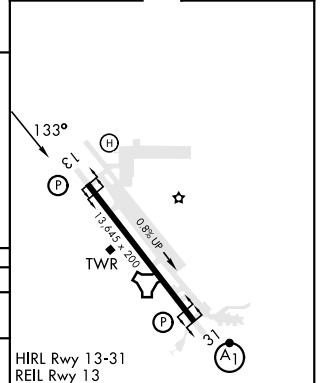
MISSED APPROACH: Climbing to 8000 intercept DMA TACAN R-123 to ACINI. Expect RADAR vectors.

ATIS★ 132.3 270.1	TUCSON APP CON 066°-274° 119.4 318.1 275°-065° 125.1 269.55	TOWER 118.85 253.5	GND CON 121.8 275.8	CLNC DEL 121.8 275.8
-----------------------------	---	------------------------------	-------------------------------	--------------------------------



EMERG SAFE ALT 100 NM 17,000

	SHORR DMA (2) 11,000	FIVIL DMA (14) 6,600	NEBNE DMA (7.3) 4,600	ESACLE DMA (2) 3,17° TCH 58	DMA TACAN	8000 DMA R-123	ACINI DMA (25)	ELEV 2704	TDZE 2615
CATEGORY	C		D		E				
S-13	3160-1½		545 (500-1½)						
CIRCLING*	3280-1½ 576 (600-1½)		3420-2¼ 716 (800-2¼)		3460-2¾ 756 (800-2¾)		HIRL Rwy 13-31 REIL Rwy 13		



HI-TACAN Z RWY 13

SW-4, 20 FEB 2025 to 20 MAR 2025

SW-4, 20 FEB 2025 to 20 MAR 2025