

HI-TACAN Z RWY 31

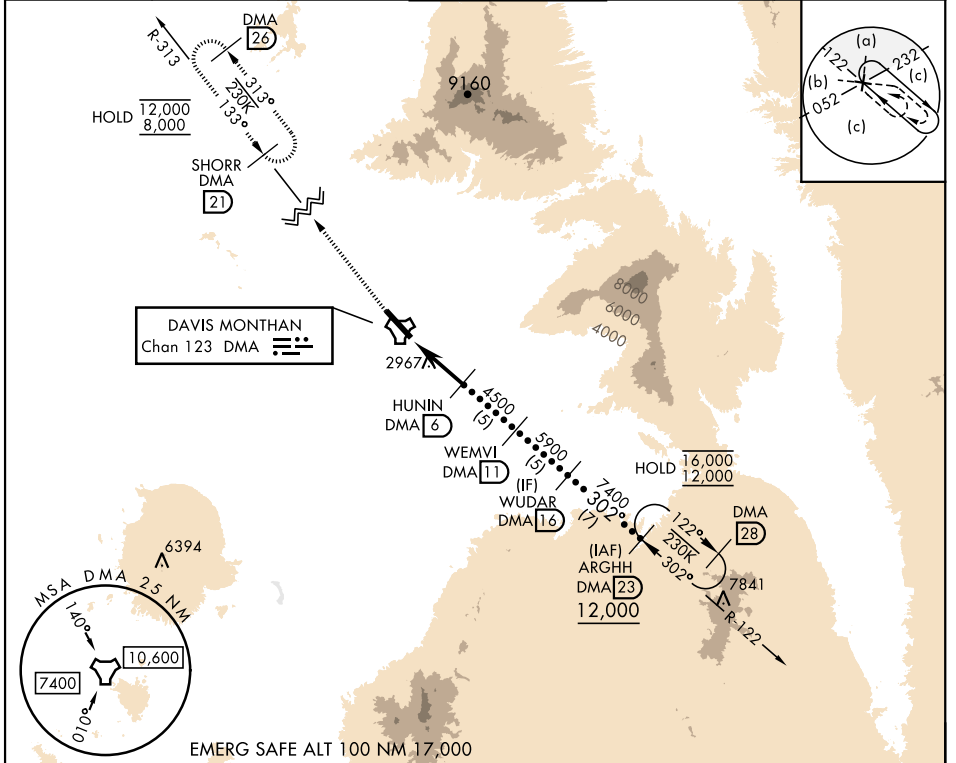
TACAN DMA Chan 123	APCH CRS 302°	Rwy ldg 13,645 TDZE 2704 Arprt Elev 2704
------------------------------	-------------------------	---

[USAF]

DAVIS-MONTHAN AFB (KDMA)

<p>▼ * When ALS inop, increase vis to 2 miles. ** Circling not authorized SW of Rwy 13-31.</p>	<p>ALSF-1 (A1)</p>	<p>MISSED APPROACH: Climb to 8000, intercept DMA TACAN R-313 to SHORR and hold, continue climb-in-hold to 8000.</p>
--	------------------------	---

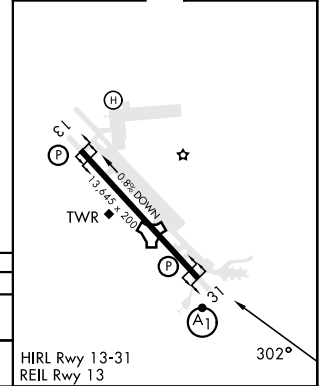
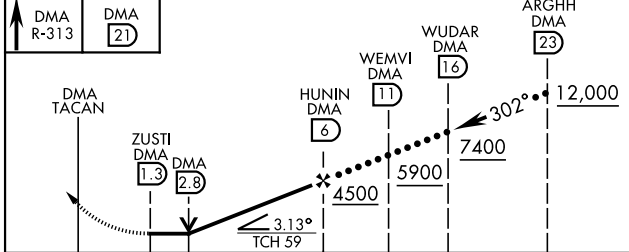
<p>ATIS★ 132.3 270.1</p>	<p>TUCSON APP CON 066°-274° 119.4 318.1 275°-065° 125.1 269.55</p>	<p>TOWER 118.85 253.5</p>	<p>GND CON 121.8 275.8</p>	<p>CLNC DEL 121.8 275.8</p>
-------------------------------------	--	--------------------------------------	---------------------------------------	--



SW-4, 20 FEB 2025 to 20 MAR 2025

SW-4, 20 FEB 2025 to 20 MAR 2025

8000 DMA R-313	SHORR DMA (21)	ELEV 2704	TDZE 2704
-------------------	-------------------	-----------	-----------



CATEGORY	C	D	E
S-31*	3420-15%	716 (800-15%)	
CIRCLING**	3420-2 716 (800-2)	3420-2¼ 716 (800-2¼)	3460-2¾ 756 (800-2¾)

HIRL Rwy 13-31
REIL Rwy 13

HI-TACAN Z RWY 31