

TUCSON, ARIZONA

ILS or LOC Y RWY 13

LOC I- AFB 109.3	APCH CRS 128°	Rwy Idg 13,645 TDZE 2615 Arprt Elev 2704
-----------------------------------	-------------------------	---

[USAF]

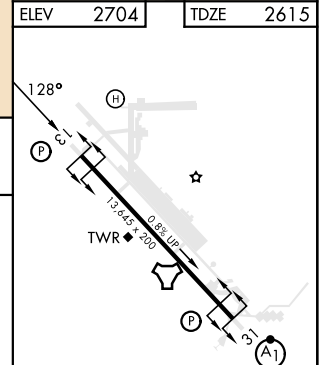
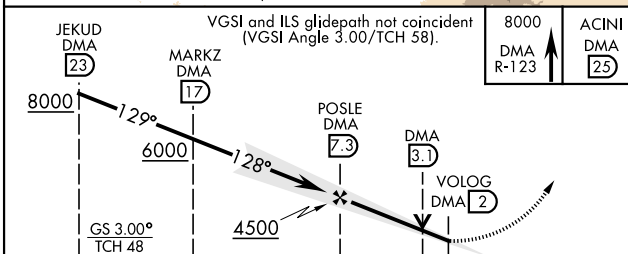
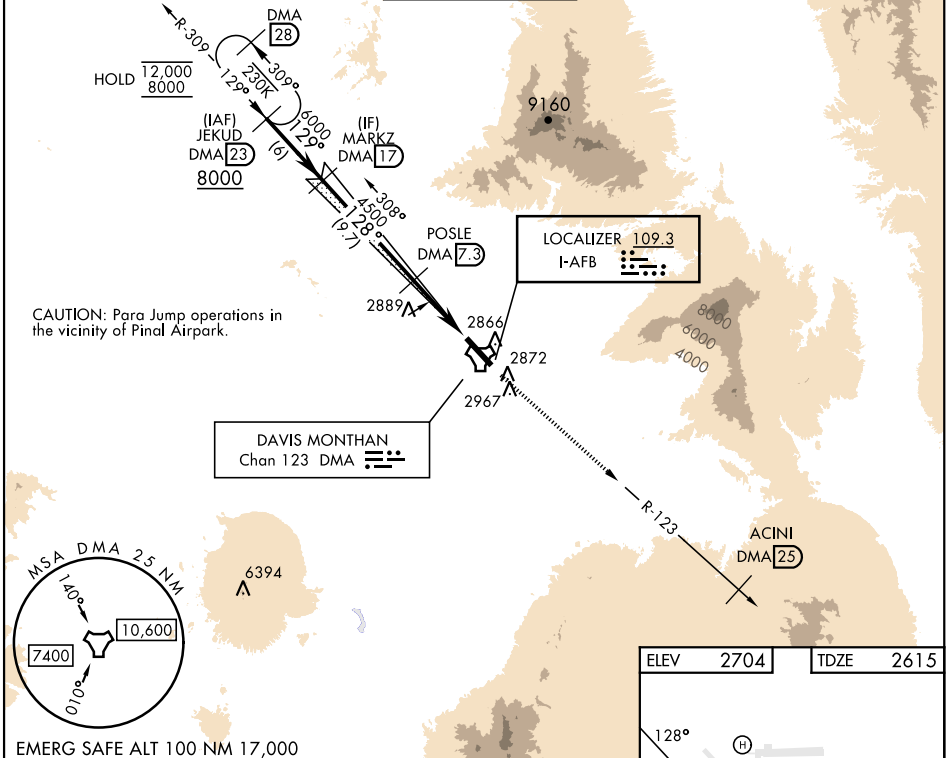
DAVIS-MONTHAN AFB (KDMA)

DME or RADAR required

▼ * Circling not authorized SW of Rwy 13-31.

MISSED APPROACH: Climbing to 8000 intercept DMA TACAN R-123 to ACINI. Expect RADAR vectors.

ATIS★ 132.3 270.1	TUCSON APP CON 066°-274° 119.4 318.1 275°-065° 125.1 269.55	TOWER 118.85 253.5	GND CON 121.8 275.8	CLNC DEL 121.8 275.8
-----------------------------	---	------------------------------	-------------------------------	--------------------------------



CATEGORY	A	B	C	D	E
S-ILS 13	2815/40 200 (200-¾)				
S-LOC 13	3160/55	545 (500-1)	3160-1½	545 (500-1½)	
CIRCLING*	3200-1 496 (500-1)	3220-1 516 (600-1)	3280-1½ 576 (600-1½)	3420-2¼ 716 (800-2¼)	3460-2¾ 756 (800-2¾)

HIRL Rwy 13-31 REL Rwy 13	FAF to MAP 5.3 NM				
Knots	60	90	120	150	180
Min:Sec	5:18	3:32	2:39	2:07	1:46

TUCSON, ARIZONA
Orig 31OCT24

32°10'N-110°53'W

DAVIS-MONTHAN AFB (KDMA)

ILS or LOC Y RWY 13

SW-4, 20 FEB 2025 to 20 MAR 2025

SW-4, 20 FEB 2025 to 20 MAR 2025