

TUCSON, ARIZONA

ILS or LOC Y RWY 31

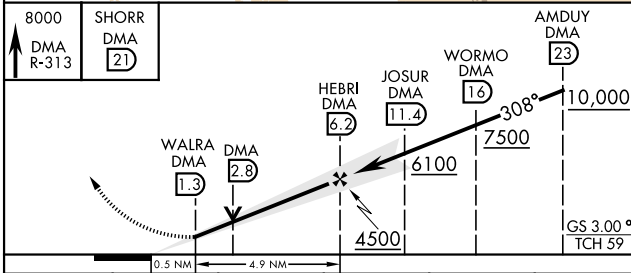
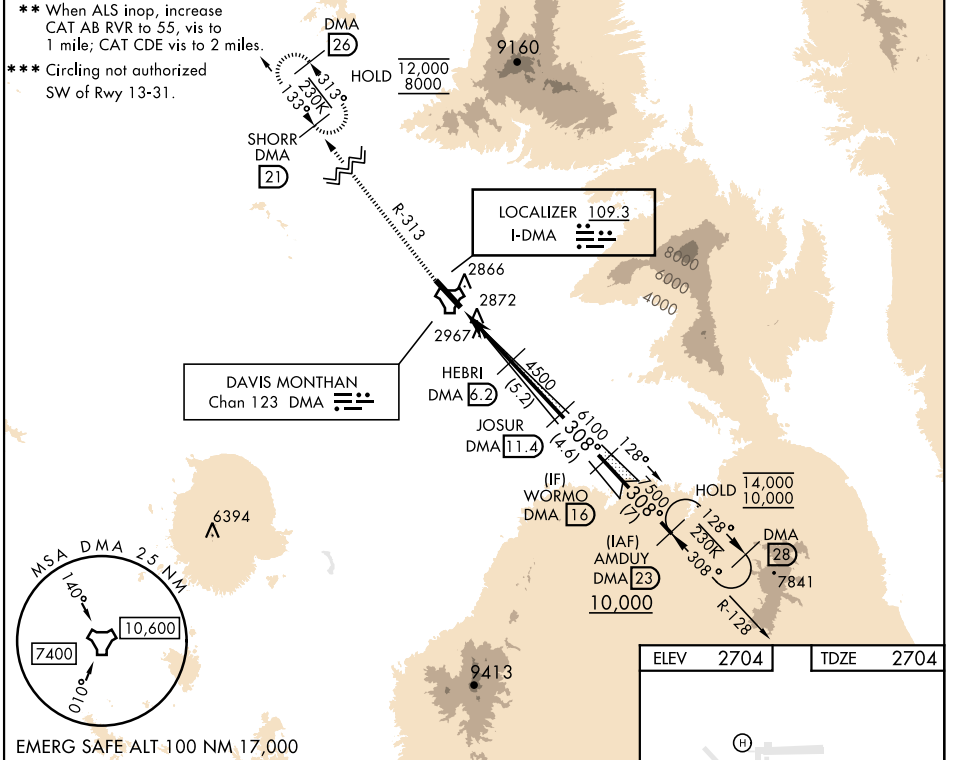
LOC I-DMA 109.3	APCH CRS 308°	Rwy Idg 13,645
		TDZE 2704
		Arprt Elev 2704

[USAF]

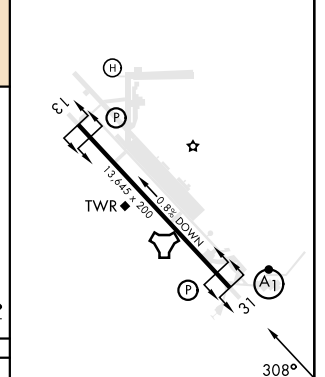
DAVIS-MONTHAN AFB (KDMA)

DME or RADAR required * When ALS inop, increase RVR to 40, vis to 3/4 mile.	ALSF-1 (A1)	MISSED APPROACH: Climb to 8000, intercept DMA TACAN R-313 to SHORR and hold, continue climb-in-hold to 8000.
--	-----------------------	--

ATIS★ 132.3 270.1	TUCSON APP CON 066°-274° 119.4 318.1 275°-065° 125.1 269.55	TOWER 118.85 253.5	GND CON 121.8 275.8	CLNC DEL 121.8 275.8
-----------------------------	---	------------------------------	-------------------------------	--------------------------------



ELEV 2704	TDZE 2704
-----------	-----------



CATEGORY	A	B	C	D	E
S-ILS 31*	2904/24 200 (200-1/2)				
S-LOC 31**	3400/24 696 (700-1/2)	3400-1 1/2 696 (700-1 1/2)			
CIRCLING***	3400-1 696 (700-1)	3400-2 696 (700-2)	3420-2 1/4 716 (800-2 1/4)	3460-2 3/4 756 (800-2 3/4)	

HIRL Rwy 13-31	FAF to MAP 4.9 NM					
REIL Rwy 13						
	Knots	60	90	120	150	180
	Min:Sec	4:54	3:16	2:27	1:58	1:38

TUCSON, ARIZONA

32°10'N-110°53'W

DAVIS-MONTHAN AFB (KDMA)

Orig 31OCT24

ILS or LOC Y RWY 31

SW-4, 20 FEB 2025 to 20 MAR 2025

SW-4, 20 FEB 2025 to 20 MAR 2025