

LOC/DME I-TUS 111.7 Chan 54	APP CRS 126°	Rwy Idg 10996 TDZE 2599 Apt Elev 2643
---	------------------------	--

ILS or LOC RWY 12

TUCSON INTL (TUS)

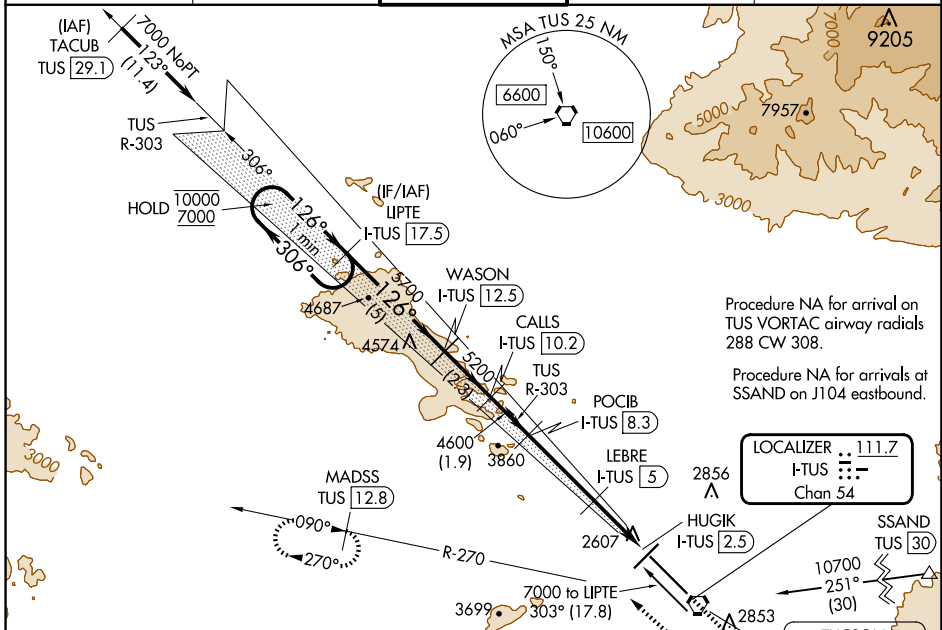
RADAR or DME required. RADAR required for procedure entry at TACUB.

- For inop ALS, increase S-ILS 12 Cat E visibility to RVR 4000,
- S-LOC 12 Cat E visibility to 2 1/2 SM; LEBRE fix minimums: S-LOC 12 Cat C/D/E visibility to RVR 5500.
- *RVR 1800 authorized with use of FD or AP or HUD to DA.



MISSED APPROACH: Climb to 4000 then climbing right turn to 6000 on heading 300° and on TUS VORTAC R-270 to MADSS/TUS 12.8 DME and hold, continue climb in-hold to 6000.

ATIS 123.8 279.65	TUCSON APP CON 119.4 318.1	TUCSON TOWER 118.3 257.8	GND CON 120.025 348.6	CLNC DEL 126.65 326.2
-----------------------------	--------------------------------------	---	---------------------------------	---------------------------------



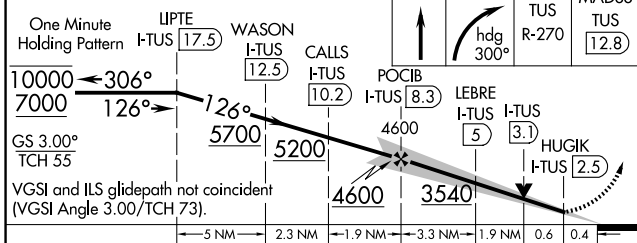
Procedure NA for arrival on TUS VORTAC airway radials 288 CW 308.

Procedure NA for arrivals at SSAND on J104 eastbound.

LOCALIZER 111.7
I-TUS
Chan 54

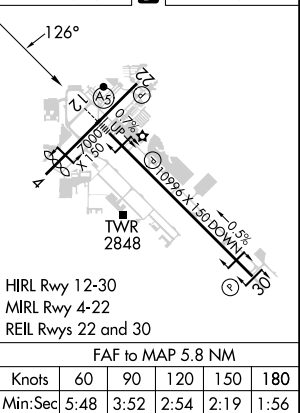
TUCSON 116.0 TUS
Chan 107

Use I-TUS DME when on the localizer course.



One Minute Holding Pattern	LIPTE I-TUS [17.5]	WASON I-TUS [12.5]	CALLS I-TUS [10.2]	POCIB I-TUS [8.3]	LEBRE I-TUS [5]	HUGIK I-TUS [2.5]
4000	6000	TUS R-270	MADSS TUS [12.8]			
10000 ← 306°	7000	5700	5200	4600	3540	
GS 3.00° TCH 55	VGSi and ILS glidepath not coincident (VGSi Angle 3.00/TCH 73).					
	← 5 NM	← 2.3 NM	← 1.9 NM	← 3.3 NM	← 1.9 NM	← 0.6
						← 0.4
CATEGORY	A	B	C	D	E	
S-ILS 12*	2799/24		200 (200-1/2)			
S-LOC 12	3540/40	941 (1000-3/4)	3540-2		941 (1000-2)	
CIRCLING	3540-1 1/4	897 (900-1 1/4)	3540-2 3/4	3640-3	3900-3	
			897 (900-2 3/4)	997 (1000-3)	1257 (1300-3)	
LEBRE FIX MINIMUMS						
S-LOC 12	2960/24	361 (400-1/2)	2960/35		361 (400-3/4)	
CIRCLING	3160-1	3220-1	3220-1 1/2	3640-3	3900-3	
	517 (600-1)	577 (600-1)	577 (600-1 1/2)	997 (1000-3)	1257 (1300-3)	

ELEV 2643	TDZE 2599
-----------	-----------



SW-4, 20 FEB 2025 to 20 MAR 2025

SW-4, 20 FEB 2025 to 20 MAR 2025

HRL Rwy 12-30	MR L Rwy 4-22	REIL Rwy 22 and 30
FAF to MAP 5.8 NM		
Knots	60	90 120 150 180
Min:Sec	5:48	3:52 2:54 2:19 1:56