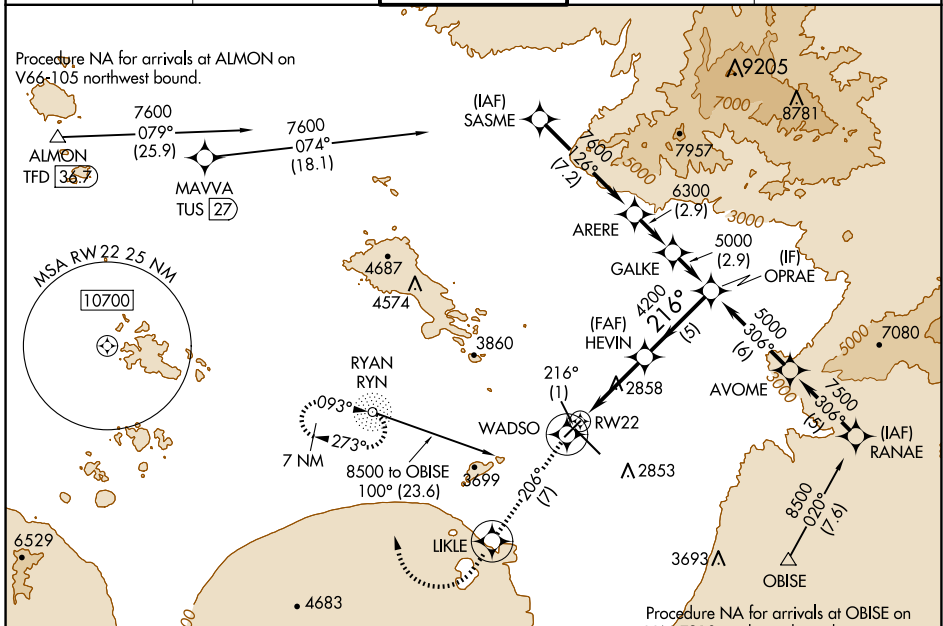


APP CRS	Rwy Idg	<b>6000</b>
<b>216°</b>	TDZE	<b>2572</b>
	Apt Elev	<b>2643</b>

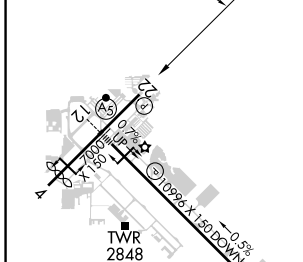
# RNAV (GPS) RWY 22

TUCSON INTL (TUS)

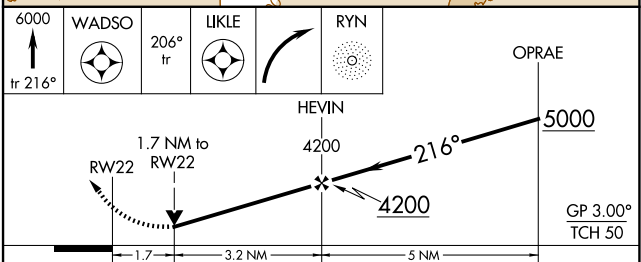
RNP APCH - GPS.		MISSED APPROACH: Climb to 6000 on track 216° to WADSO and 206° track to LIKLE and right turn direct RYN NDB and hold, continue climb-in-hold to 6000.	
<p><b>▼</b> Rwy 22 helicopter visibility reduction below ¼ SM NA.  <b>▲</b> For uncompensated Baro-VNAV systems, LNAV/VNAV NA below -2°C or above 54°C.</p>		<p>ATIS <b>123.8 279.65</b></p>	<p>TUCSON APP CON <b>119.4 318.1</b></p>
<p>TUCSON TOWER <b>118.3 257.8</b></p>		<p>GND CON <b>120.025 348.6</b></p>	<p>CLNC DEL <b>126.65 326.2</b></p>



ELEV 2643	<b>D</b>	TDZE 2572
-----------	----------	-----------



HIRL Rwy 12-30	MIRL Rwy 4-22	REIL Rwy 22 and 30
----------------	---------------	--------------------



CATEGORY	A	B	C	D
LNAV/VNAV DA	3145-2 573 (600-2)			
LNAV MDA	3160-1 588 (600-1)	3160-1¾ 588 (600-1¾)		
CIRCLING	3160-1 517 (600-1)	3220-1 577 (600-1)	3220-1¾ 577 (600-1¾)	3660-3 1017 (1100-3)

SW-4, 20 FEB 2025 to 20 MAR 2025

SW-4, 20 FEB 2025 to 20 MAR 2025