

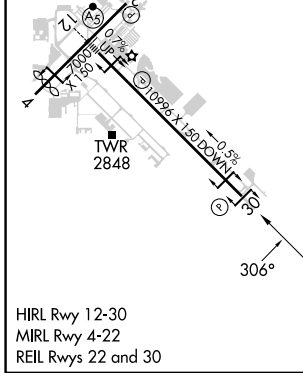
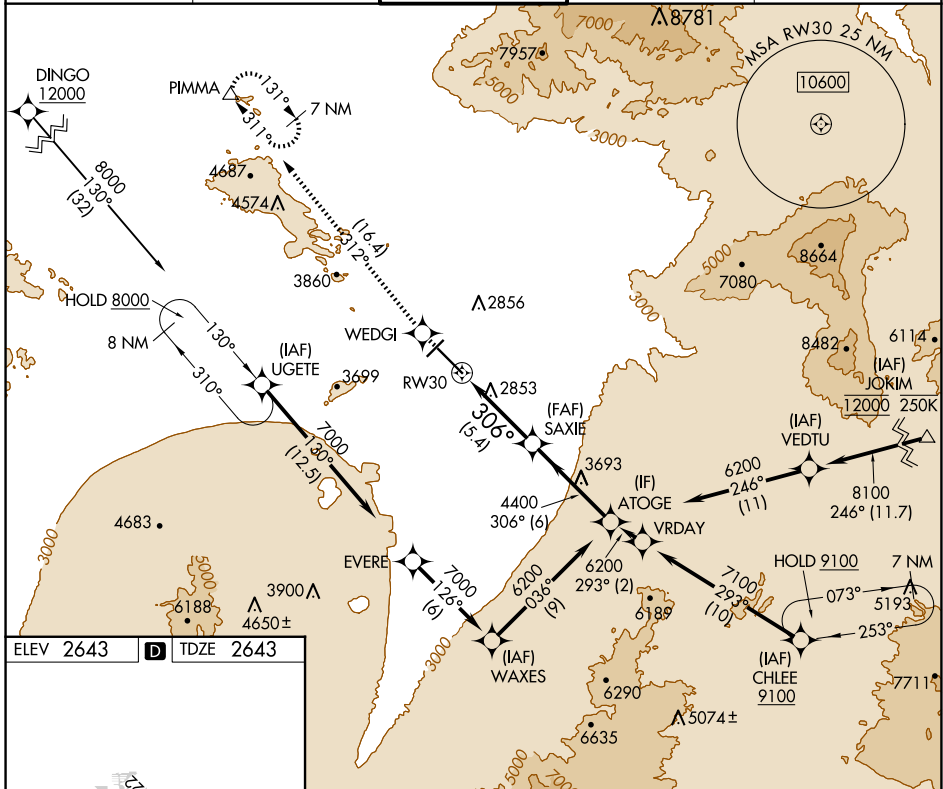
APP CRS	Rwy Idg	10996
306°	TDZE	2643
	Apt Elev	2643

RNAV (RNP) Y RWY 30

TUCSON INTL (TUS)

RNP AR APCH - GPS.	MISSED APPROACH: Climb to 6800 direct WEDGI and on track 312° to PIMMA and hold.
▼ For uncompensated Baro-VNAV systems, procedure NA below -2°C or above 54°C.	

ATIS 123.8 279.65	TUCSON APP CON 119.4 318.1	TUCSON TOWER 118.3 257.8	GND CON 120.025 348.6	CLNC DEL 126.65 326.2
-----------------------------	--------------------------------------	------------------------------------	---------------------------------	---------------------------------



6800	WEDGI	PIMMA	VGSI and RNAV glidepath not coincident (VGSI Angle 3.00/TCH 81).	
↑	◆	tr 312°	△	
			SAXIE	ATOGE
			4400	6200
			306°	
			5.4 NM	6 NM
CATEGORY	A	B	C	D
RNP 0.30 DA	3062-1½ 419 (500-1½)			
AUTHORIZATION REQUIRED				

SW-4, 20 FEB 2025 to 20 MAR 2025

SW-4, 20 FEB 2025 to 20 MAR 2025