

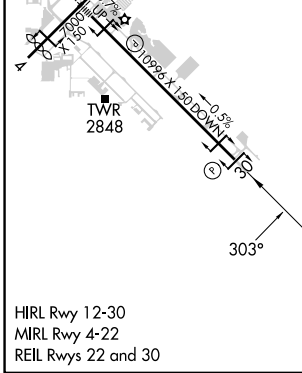
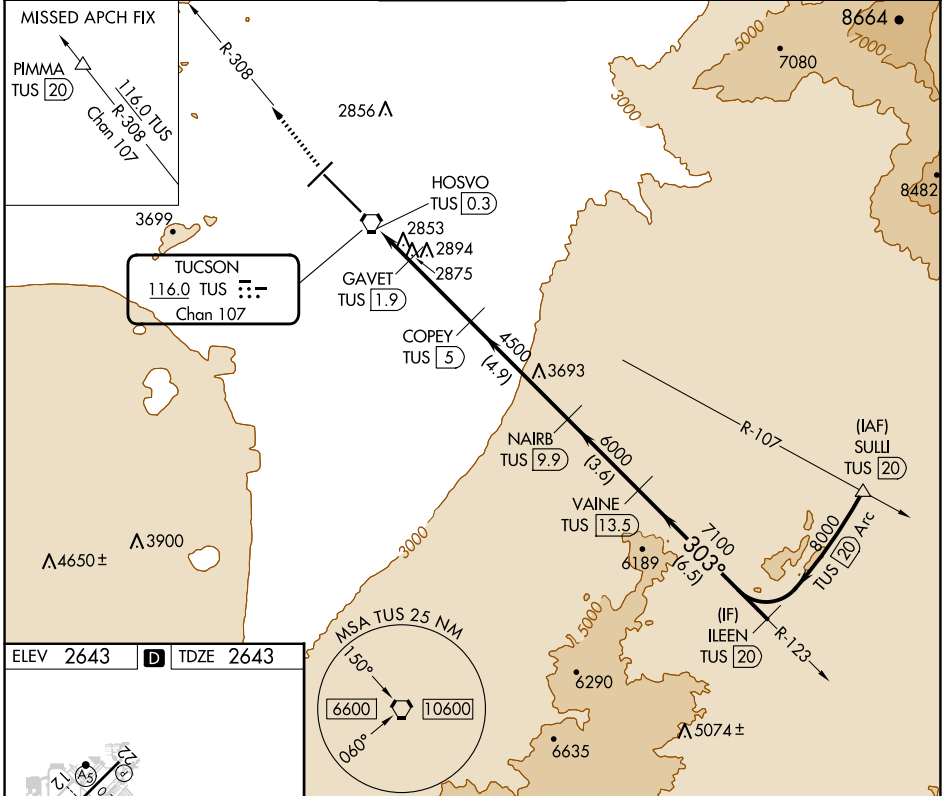
VORTAC TUS <b>116.0</b> Chan <b>107</b>	APP CRS <b>303°</b>	Rwy Idg <b>10996</b> TDZE <b>2643</b> Apt Elev <b>2643</b>
---	------------------------	--

# VOR or TACAN RWY 30

TUCSON INTL (TUS)

DME required.		MISSED APPROACH: Climb to 6500 to PIMMA/TUS 20 DME on TUS R-308.		
---------------	--	--	--	--

ATIS <b>123.8 279.65</b>	TUCSON APP CON <b>119.4 318.1</b>	TUCSON TOWER <b>118.3 257.8</b>	GND CON <b>120.025 348.6</b>	CLNC DEL <b>126.65 326.2</b>
-----------------------------	--------------------------------------	------------------------------------	---------------------------------	---------------------------------



ELEV 2643	D	TDZE 2643	
6500	PIMMA TUS R-308	VGSI and descent angles not coincident (VGSI Angle 3.00/TCH 81).	ILEEN TUS 20
3500	TUS VORTAC	GAVET TUS 1.9	VAINÉ TUS 13.5
4500	HOSVO TUS 0.3	COPEY TUS 5	NAIRB TUS 9.9
3.04° TCH 55			
0.6	0.3	1.6 NM	3.1 NM
		4.9 NM	3.6 NM
			6.5 NM

CATEGORY	A	B	C	D	E
S-30	3160-1	517 (600-1)	3160-1 $\frac{3}{8}$	517 (600-1 $\frac{3}{8}$ )	
CIRCLING	3160-1 517 (600-1)	3220-1 577 (600-1)	3220-1 $\frac{1}{2}$ 577 (600-1 $\frac{1}{2}$ )	3660-3 1017(1100-3)	3920-3 1277(1300-3)

SW-4, 20 FEB 2025 to 20 MAR 2025

SW-4, 20 FEB 2025 to 20 MAR 2025