

LOC/DME I-TUL 110.3 Chan 40	APP CRS 360°	Rwy Idg 122°	10000
		TDZE 650	
		Apt Elev 678	

ILS or LOC RWY 36R

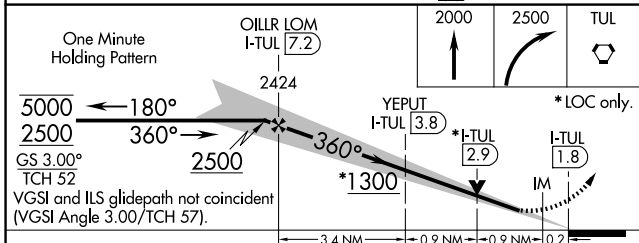
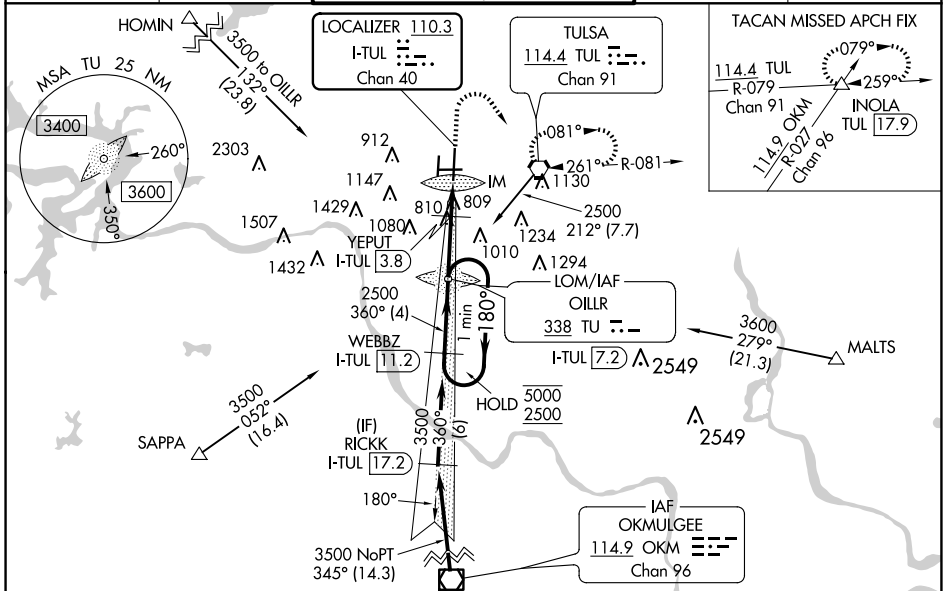
TULSA INTL (TUL)

ADF or DME required for procedure entry.

ALS-2

MISSED APPROACH: Climb to 2000 then climbing right turn to 2500 direct TUL VORTAC and hold. (TACAN aircraft climb to 2000 then climbing right turn to 3500 via TUL VORTAC R-079 to INOLA INT/17.9 DME and hold E, RT, 259° inbound).

D-ATIS 124.9 377.2	TULSA APP CON 124.0 338.3	TULSA TOWER 121.2 310.8 (Rwys 18L-36R, 8-26) 118.7 257.8 (Rwy 18R-36L)	GND CON 121.9 348.6	CLNC DEL 134.05 284.7
------------------------------	-------------------------------------	--	-------------------------------	---------------------------------



ELEV 678	TDZE 650														
<table border="1"> <tr> <th>FAF to MAP 5.4 NM</th> <th>Knots</th> <th>60</th> <th>90</th> <th>120</th> <th>150</th> <th>180</th> </tr> <tr> <td>Min:Sec</td> <td>5:24</td> <td>3:36</td> <td>2:42</td> <td>2:10</td> <td>1:48</td> <td></td> </tr> </table>		FAF to MAP 5.4 NM	Knots	60	90	120	150	180	Min:Sec	5:24	3:36	2:42	2:10	1:48	
FAF to MAP 5.4 NM	Knots	60	90	120	150	180									
Min:Sec	5:24	3:36	2:42	2:10	1:48										
<p>HIRL Rwys 8-26, 18L-36R and 18R-36L REIL Rwys 8, 18R and 36L TDZ/CL Rwy 36R</p>															

CATEGORY	A	B	C	D	E
S-ILS 36R	850/18		200 (200-½)		
S-LOC 36R	1300/24	650 (700-½)	1300-1¾	650 (700-1¾)	
C CIRCLING	1300-1	622 (700-1)	1520-2½ 842 (900-2½)	1520-2¾ 842 (900-2¾)	1520-3 842 (900-3)
YEPUT FIX MINIMUMS (DME REQUIRED)					
S-LOC 36R	1060/24	410 (400-½)	1060/40	410 (400-¾)	
C CIRCLING	1120-1 442 (500-1)	1160-1 482 (500-1)	1520-2½ 842 (900-2½)	1520-2¾ 842 (900-2¾)	1520-3 842 (900-3)

SC-1, 20 FEB 2025 to 20 MAR 2025

SC-1, 20 FEB 2025 to 20 MAR 2025