

WAAS CH <b>93504</b> <b>W18A</b>	APP CRS <b>180°</b>	Rwy Idg TDZE <b>641</b> Apt Elev <b>678</b>	<b>10000</b>
--	------------------------	---	--------------

# RNAV (GPS) RWY 18L

TULSA INTL (TUL)

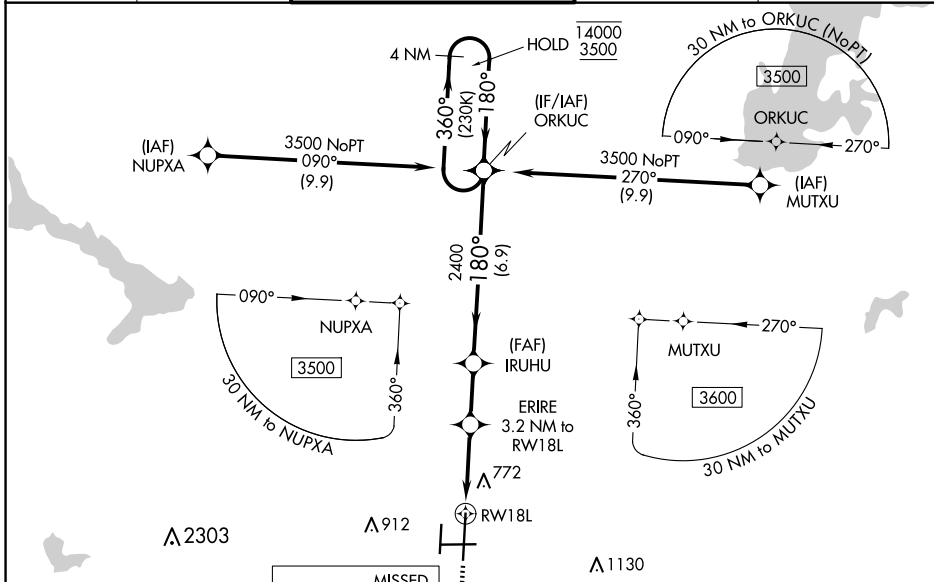
RNP APCH - GPS.

**⚠** Circling NA for Cat E south of Rwy 8-26. Use of FD or AP required during simultaneous operations. For uncompensated Baro-VNAV systems, LNAV/VNAV NA below -11°C or above 54°C. For inop ALS, increase LPV Cat E visibility to RVR 4000, LNAV/VNAV all Cats visibility to RVR 5500, and LNAV Cat E visibility to 1/4 SM. Simultaneous approach authorized. LNAV procedure NA during simultaneous operations.

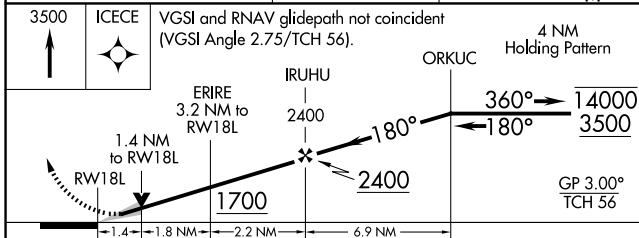


**MISSED APPROACH:**  
Climb to 3500 direct ICECE and hold.

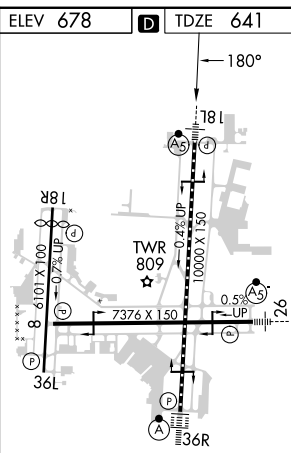
D-ATIS <b>124.9 377.2</b>	TULSA APP CON <b>124.0 338.3</b>	TULSA TOWER <b>121.2 310.8</b> (Rwys 18L-36R, 8-26) <b>118.7 257.8</b> (Rwy 18R-36L)	GND CON <b>121.9 348.6</b>	CLNC DEL <b>134.05 284.7</b>
------------------------------	-------------------------------------	--	-------------------------------	---------------------------------



ELEV 678	<b>D</b> TDZE 641
----------	-------------------



CATEGORY	A	B	C	D	E
LPV DA		841/24	200 (200-1/2)		
LNAV/VNAV DA		983/30	342 (400-5/8)		
LNAV MDA	1080/24	439 (500-1/2)	1080/40	439 (500-3/4)	
<b>C</b> CIRCLING	1120-1 442 (500-1)	1160-1 482 (500-1)	1500-2 1/2 822 (900-2 1/2)	1520-2 3/4 842 (900-2 3/4)	1520-3 842 (900-3)



TDZ/CL Rwy 36R  
HIRL Rwys 8-26, 18L-36R and 18R-36L  
REIL Rwys 8, 18R and 36L

SC-1, 20 FEB 2025 to 20 MAR 2025

SC-1, 20 FEB 2025 to 20 MAR 2025