

WAAS CH <b>50344</b> <b>W36B</b>	APP CRS <b>360°</b>	Rwy Idg TDZE Apt Elev	<b>5101</b> <b>678</b> <b>678</b>
--	------------------------	-----------------------------	---

# RNAV (GPS) RWY 36L

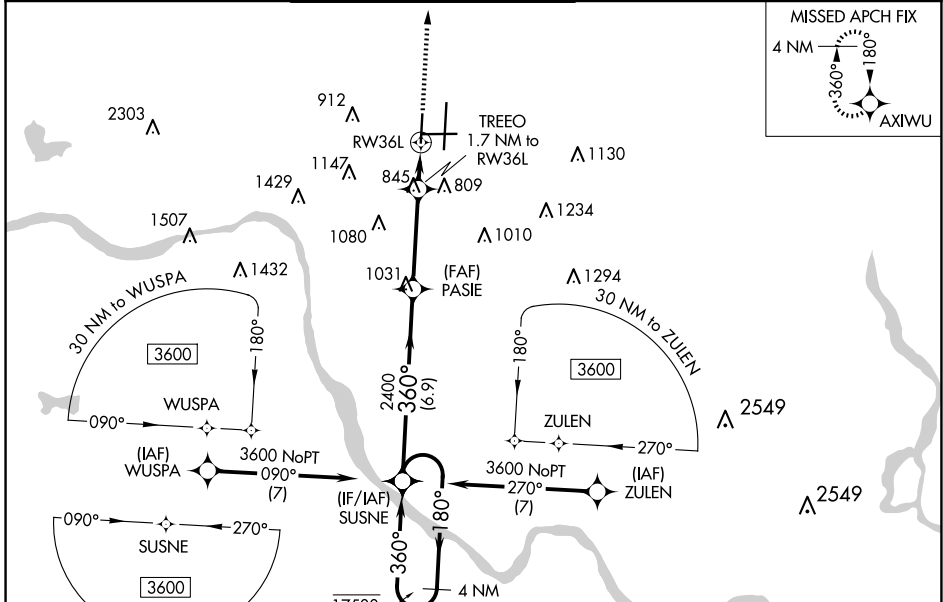
TULSA INTL (TUL)

RNP APCH - GPS.

MISSED APPROACH:  
Climb to 3500 direct  
AXIWU and hold.

Use of FD or AP required during simultaneous operations. For uncompensated Baro-VNAV systems, LNAV/VNAV NA below -14°C or above 54°C. Simultaneous approach authorized. LNAV procedure NA during simultaneous operations.

D-ATIS <b>124.9 377.2</b>	TULSA APP CON <b>124.0 338.3</b>	TULSA TOWER <b>121.2 310.8</b> (Rwys 18L-36R, 8-26) <b>118.7 257.8</b> (Rwy 18R-36L)	GND CON <b>121.9 348.6</b>	CLNC DEL <b>134.05 284.7</b>
------------------------------	-------------------------------------	--	-------------------------------	---------------------------------

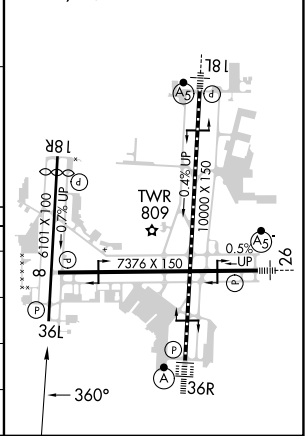
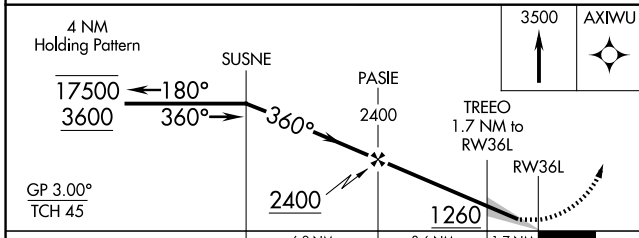


SC-1, 20 FEB 2025 to 20 MAR 2025

SC-1, 20 FEB 2025 to 20 MAR 2025

ELEV 678	<b>D</b>	TDZE 678
----------	----------	----------

TDZ/CL Rwy 36R  
HIRL All Rwys  
REIL Rwys 8, 18R and 36L



CATEGORY	A	B	C	D
LPV DA		928-3/4	250 (300-3/4)	
LNAV/VNAV DA		1088-1 1/8	410 (500-1 1/8)	
LNAV MDA	1120-1	442 (500-1)	1120-1 3/8	442 (500-1 3/8)
<b>C</b> CIRCLING	1120-1 442 (500-1)	1160-1 482 (500-1)	1500-2 1/2 822 (900-2 1/2)	1520-2 3/4 842 (900-2 3/4)