

(TUL1.TUL) 24137

AL-432 (FAA)

TULSA INTL (TUL)
TULSA, OKLAHOMA

TULSA ONE DEPARTURE

TULSA DEP CON
124.0 338.3
D-ATIS
124.9 377.2
CLNC DEL
134.05 284.7
TULSA TOWER
118.7 257.8 (Rwy 18R-36L)
121.2 310.8 (Rwys 8-26, 18L-36R)

RADAR required.

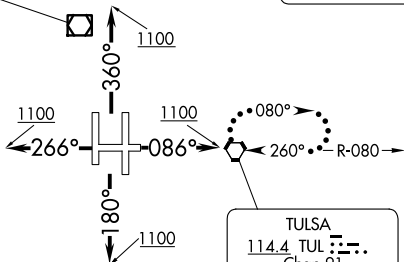
**TOP ALTITUDE:
15000**

FARMINGTON
115.7 FAM Chan 104

SPRINGFIELD
116.9 SGF Chan 116

RAZORBACK
116.4 RZC Chan 111

BARTLESVILLE
117.9 BVO Chan 126



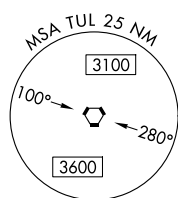
WILL ROGERS
114.1 IRW Chan 88

FORT SMITH
110.4 FSM Chan 41

ARDMORE
116.7 ADM Chan 114

TAKEOFF MINIMUMS
Rwys 8, 18L/R, 36L/R: Standard.
Rwy 26: Standard with minimum
climb of 225' per NM to 2900.

MAVERICK
113.1 TTT Chan 78



NOTE: Chart not to scale.

DEPARTURE ROUTE DESCRIPTION

TAKEOFF RUNWAYS 18L/R: Climb on heading 180° to 1100, thence. . .

TAKEOFF RUNWAYS 36L/R: Climb on heading 360° to 1100, thence. . .

TAKEOFF RUNWAY 8: Climb on heading 086° to 1100, thence. . .

TAKEOFF RUNWAY 26: Climb on heading 266° to 1100, thence. . .

. . . continue on assigned heading for RADAR vectors to assigned route, maintain 15000 or assigned lower altitude, expect further clearance to filed altitude 10 minutes after departure.

LOST COMMUNICATIONS: Proceed to and hold east of TUL VORTAC on the 080° radial. Climb to 15000 feet or lower requested altitude, then proceed on course on filed route. Climb to requested altitude when established on course.

TULSA ONE DEPARTURE
(TUL1.TUL) 16MAY24

TULSA, OKLAHOMA
TULSA INTL (TUL)

SC-1, 20 FEB 2025 to 20 MAR 2025

SC-1, 20 FEB 2025 to 20 MAR 2025