

HI-ILS or LOC Z RWY 36R

LOC I-MDG 109.9	APCH CRS 003°	Rwy Idg TDZE Arprt Elev 9300 217 233	[USAF]	MOODY AFB (KVAD)
---------------------------	-------------------------	--	--------	------------------

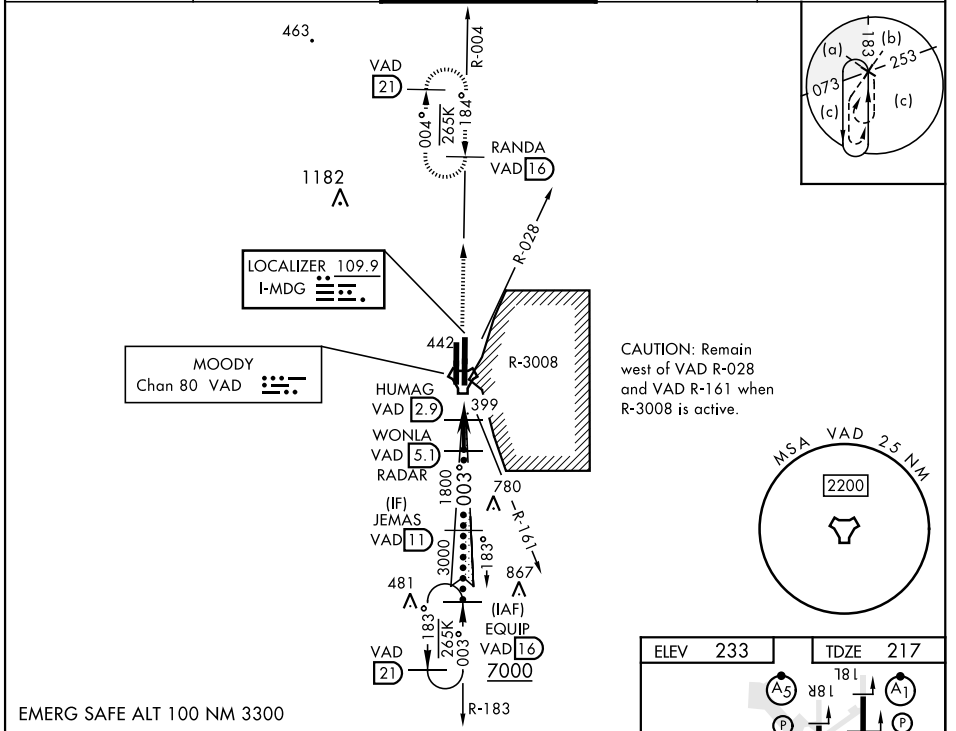
RADAR or DME required

ALSF-1 (A1)

MISSED APPROACH: Climb to 3000 on VAD TACAN R-004 to RANDA and hold.

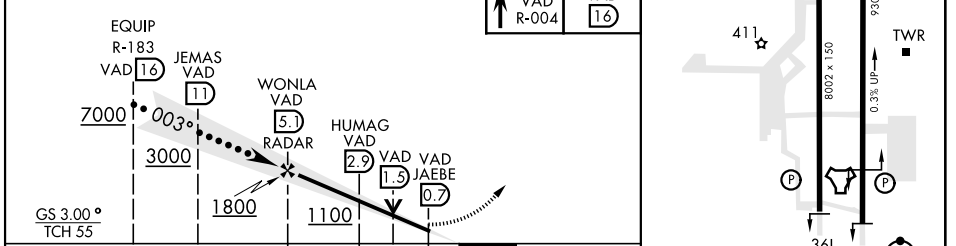
* When ALS inop, increase RVR to 40 and vis to 3/4 mile.
 ** When ALS inop, increase vis to 1 1/2 miles.

ATIS ★ 273.5	VALDOSTA APP CON 126.6 285.6	TOWER ★ 128.45 (CTAF) 257.625	GND CON 138.95 275.8	CLNC DEL 120.625 296.7
------------------------	--	--	--------------------------------	----------------------------------



EMERG SAFE ALT 100 NM 3300

ELEV 233 TDZE 217



CATEGORY	C	D	E
S-ILS 36R *	417/24	200 (200-1/2)	
S-LOC 36R **	660/45	443 (500-1/2)	
CIRCLING	760-1 1/2 527 (600-1 1/2)	800-2 567 (600-2)	

HIRL all rwy 003°

FAF to MAP 4.3 NM

Knots	120	140	160	180	200
Min:Sec	2:09	1:51	1:37	1:26	1:17

VALDOSTA, GEORGIA 30° 58' N-83° 12' W MOODY AFB (KVAD)

HI-ILS or LOC Z RWY 36R

SE-4, 20 FEB 2025 to 20 MAR 2025

SE-4, 20 FEB 2025 to 20 MAR 2025