

HI-TACAN Z RWY 18L

TACAN VAD Chan 80	APCH CRS 187°	Rwy Idg TDZE Arprt Elev 9300 233 233
-----------------------------	-------------------------	--

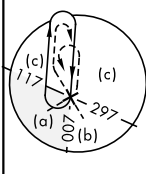
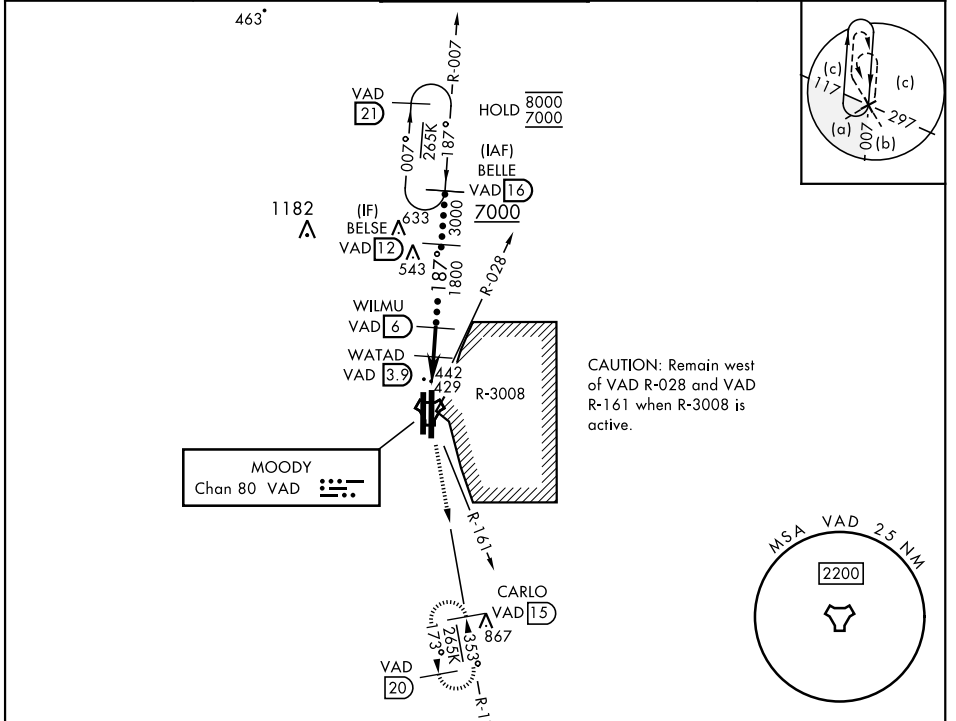
[USAF]

MOODY AFB (KVAD)

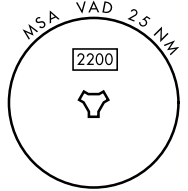
▼ *When ALS inop, increase vis to 1 3/8 miles.

 MISSED APPROACH: Climb to 3000 on VAD TACAN R-173 to CARLO and hold.

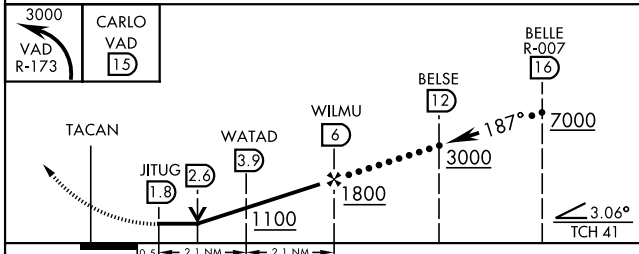
ATIS ★ 273.5	VALDOSTA APP CON 126.6 285.6	TOWER ★ 128.45 (CTAF) 257.625	GND CON 138.95 275.8	CLNC DEL 120.625 296.7
------------------------	--	---	--------------------------------	----------------------------------



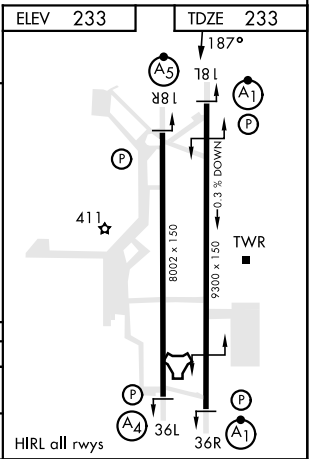
CAUTION: Remain west of VAD R-028 and VAD R-161 when R-3008 is active.



EMERG SAFE ALT 100 NM 3300



CATEGORY	C	D	E
S-18L*	700/50	467 (500-1)	
CIRCLING	760-1 1/2 527 (600-1 1/2)	800-2	567 (600-2)



HI-TACAN Z RWY 18L

SE-4, 20 FEB 2025 to 20 MAR 2025

SE-4, 20 FEB 2025 to 20 MAR 2025