

TACAN Y RWY 36L

TACAN VAD Chan 80	APCH CRS 010°	Rwy Idg TDZE Arprt Elev	8002 225 233
-----------------------------	-------------------------	-------------------------------	---

[USAF]

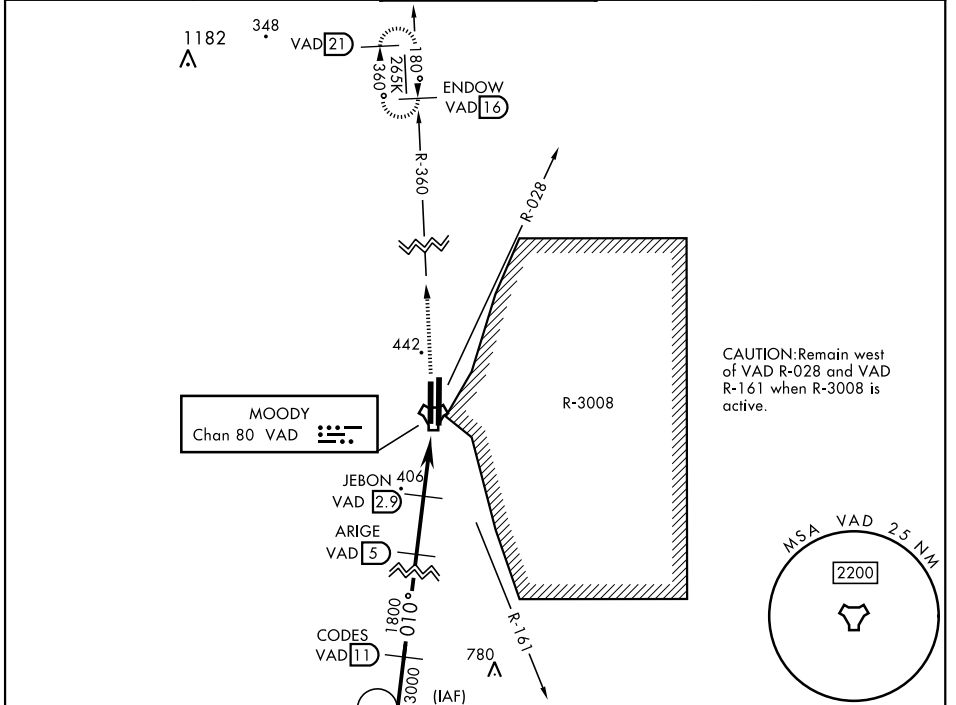
MOODY AFB (KVAD)

▼ * When ALS inop, increase CAT AB RVR to 55 and vis to 1 mile, CAT CDE vis to 1¼ miles.

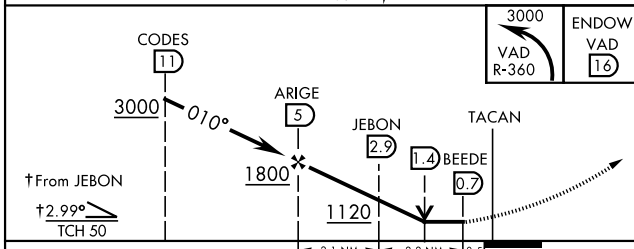
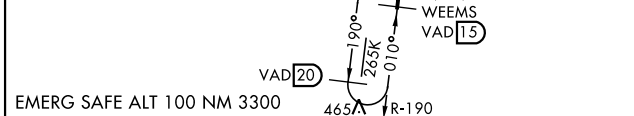
MALS **(A4)**

MISSED APPROACH: Climb to 3000 on VAD TACAN R-360 to ENDOW and hold.

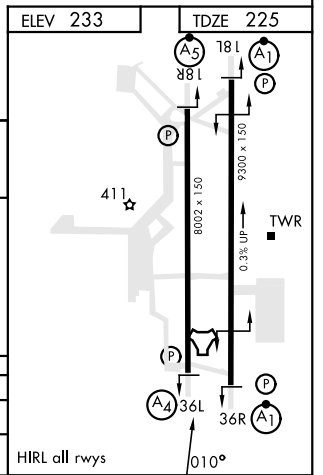
ATIS ★ 273.5	VALDOSTA APP CON 126.6 285.6	TOWER ★ 128.45 (CTAF) 257.625	GND CON 138.95 275.8	CLNC DEL 120.625 296.7
------------------------	--	---	--------------------------------	----------------------------------



CAUTION: Remain west of VAD R-028 and VAD R-161 when R-3008 is active.



CATEGORY	A	B	C	D	E
S-36L*	660/40	435 (500-¾)	660/50	435 (500-1)	
◉ CIRCLING	760-1	527 (600-1)	760-1½ 527 (600-1½)	800-2	567 (600-2)



TACAN Y RWY 36L

SE-4, 20 FEB 2025 to 20 MAR 2025

SE-4, 20 FEB 2025 to 20 MAR 2025