

WAAS CH 65919 W01A	APP CRS 007°	Rwy Idg 7005 TDZE 511 Apt Elev 516
---------------------------------	------------------------	---

RNAV (GPS) RWY 1

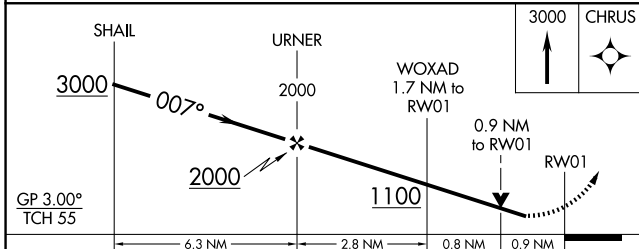
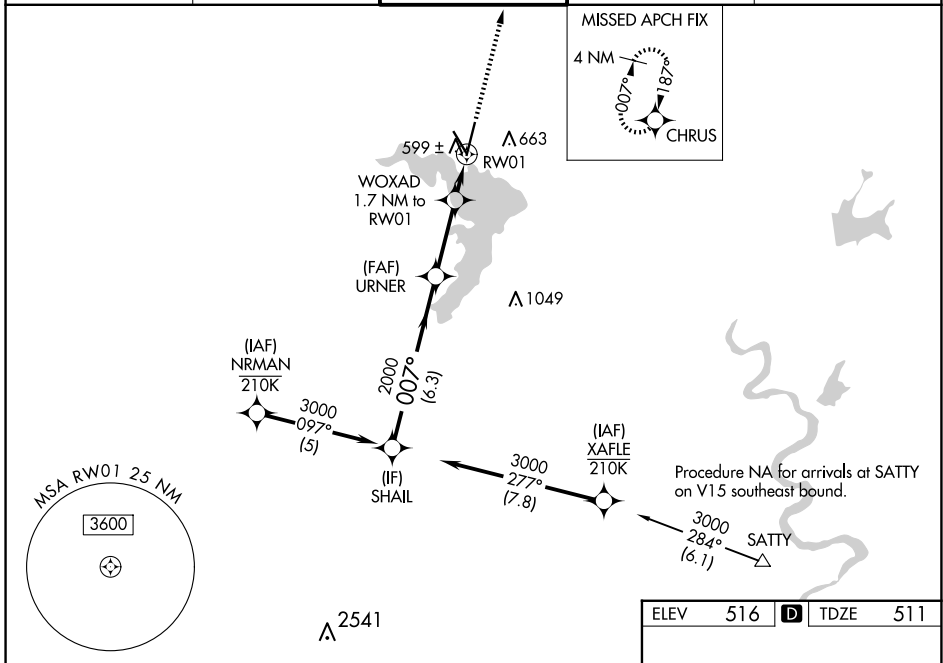
WACO RGNL (ACT)

RNP APCH - GPS.

ASR For uncompensated Baro-VNAV systems, LNAV/VNAV NA below -8°C or above 54°C. Baro-VNAV and VDP NA when using PWG altimeter setting. Rwy 1 helicopter visibility reduction below 3/4 SM NA. When local altimeter setting not received, use PWG altimeter setting and increase LPV DA to 792 feet and all visibilities 1/8 SM. Increase LNAV/VNAV DA to 813 feet; increase all MDAs 40 feet and LNAV visibility Cat C/D 1/8 SM, and Circling visibility Cat D 1/4 SM.

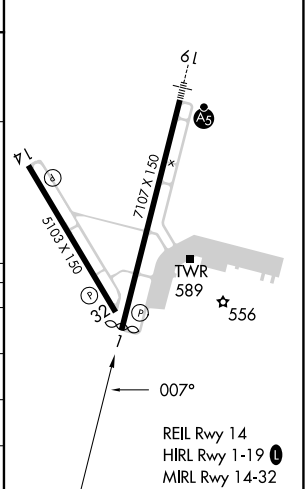
MISSED APPROACH:
Climb to 3000 direct CHRUS and hold.

ATIS 123.85	WACO APP CON ★ 127.65 227.125	WACO TOWER ★ 119.3 (CTAF) 0 257.8	GND CON 121.9	UNICOM 122.95
-----------------------	---	---	-------------------------	-------------------------



CATEGORY	A	B	C	D
LPV DA		761-3/4	250 (300-3/4)	
LNAV/VNAV DA		782-7/8	271 (300-7/8)	
LNAV MDA		860-1	349 (400-1)	
CIRCLING	940-1	980-1	1020-1 1/2	1160-2
	424 (500-1)	464 (500-1)	504 (600-1 1/2)	644 (700-2)

ELEV	516	D	TDZE	511
------	-----	---	------	-----



SC-3, 20 FEB 2025 to 20 MAR 2025

SC-3, 20 FEB 2025 to 20 MAR 2025