

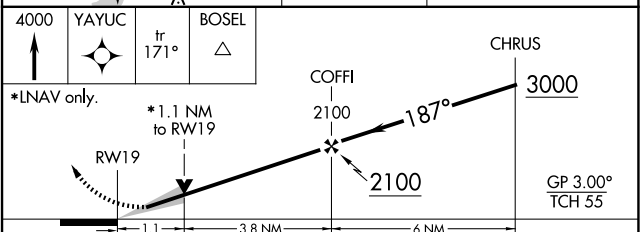
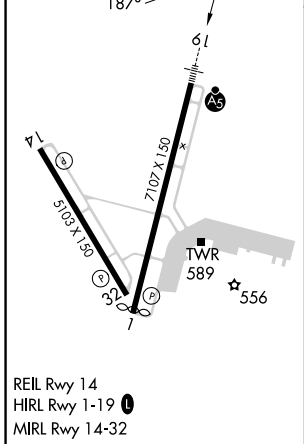
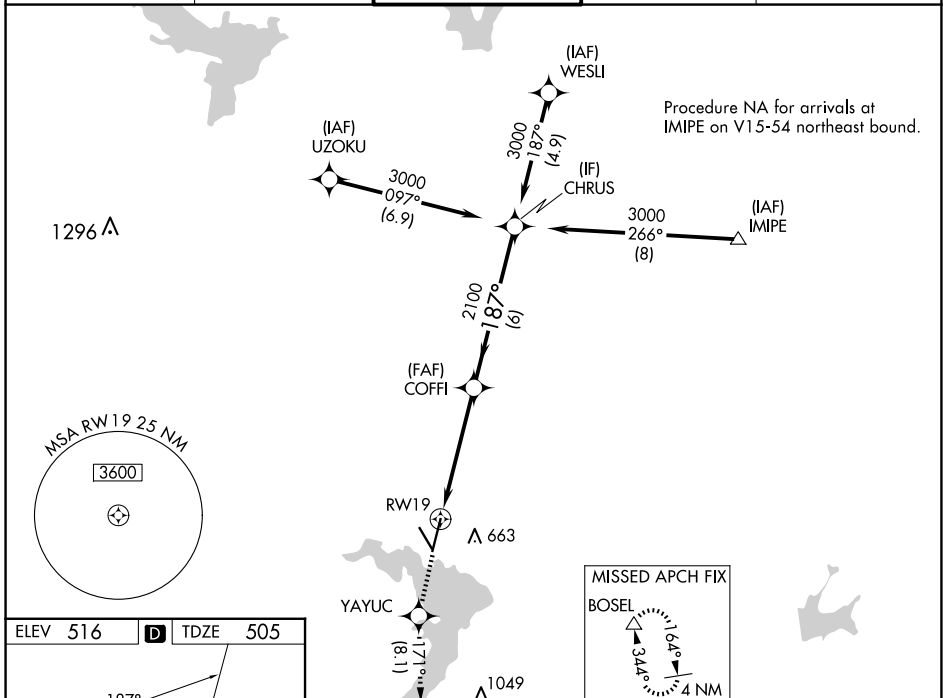
WAAS CH <b>82119</b> <b>W19A</b>	APP CRS <b>187°</b>	Rwy Idg <b>6605</b> TDZE <b>505</b> Apt Elev <b>516</b>
--	------------------------	---

# RNAV (GPS) RWY 19

WACO RGNL (ACT)

RNP APCH - GPS.	MALSR	MISSED APPROACH: Climb to 4000 direct YAYUC and on track 171° to BOSEL and hold, continue climb-in-hold to 4000.
<p>▼ For uncompensated Baro-VNAV systems, LNAV/VNAV NA below -8°C or above 54°C. For inop ALS, increase LNAV/VNAV visibility all Cats to RVR 4000.</p> <p>ASR ***RVR 1800 authorized with use of FD or AP or HUD to DA.</p>		

ATIS <b>123.85</b>	WACO APP CON * <b>127.65 227.125</b>	WACO TOWER * <b>119.3 (CTAF) 0 257.8</b>	GND CON <b>121.9</b>	UNICOM <b>122.95</b>
-----------------------	---	---	-------------------------	-------------------------



CATEGORY	A	B	C	D
LPV DA**	705/24		200 (200-½)	
LNAV/VNAV DA	755/24		250 (300-½)	
LNAV MDA	900/24	395 (400-½)	900/35	395 (400-¾)
<b>C</b> CIRCLING	940-1 424 (500-1)	980-1 464 (500-1)	1020-1½ 504 (600-1½)	1160-2 644 (700-2)

SC-3, 20 FEB 2025 to 20 MAR 2025

SC-3, 20 FEB 2025 to 20 MAR 2025