

VORTAC ACT	APP CRS	Rwy Idg	5103
115.3	141°	TDZE	513
Chan 100		Apt Elev	516

VOR RWY 14

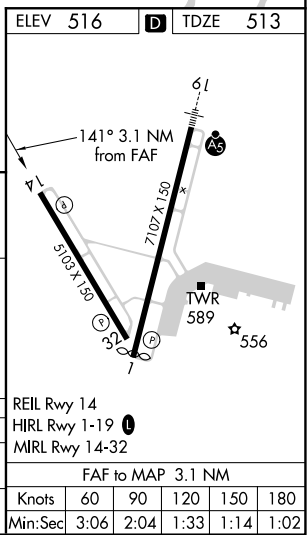
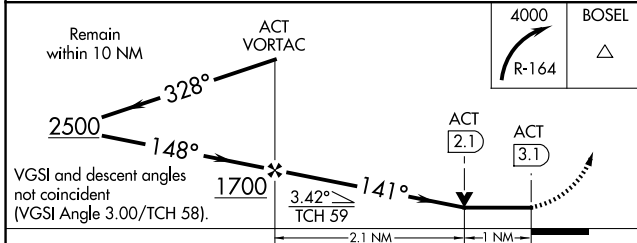
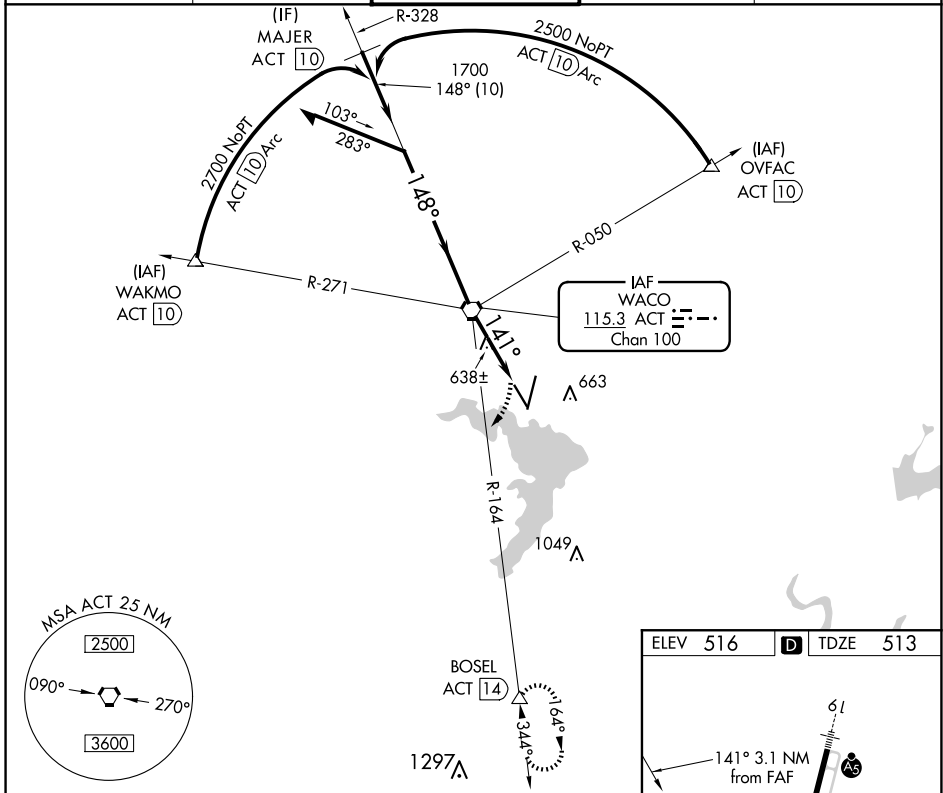
WACO RGNL (ACT)

DME required.

ASR Rwy 14 helicopter visibility reduction below 3/4 SM NA. VDP NA with Mc Gregor Exec altimeter setting. When local altimeter setting not received, use Mc Gregor Exec altimeter setting and increase all MDAs 40 feet; and increase S-14 Cat C/D visibility 1/2 SM and Circling Cat D visibility 1/4 SM.

MISSED APPROACH: Climbing right turn to 4000 on ACT VORTAC R-164 to BOSEL/ACT 14.00 DME and hold, Continue climb-in-hold to 4000.

ATIS	WACO APP CON *	WACO TOWER *	GND CON	UNICOM
123.85	127.65 227.125	119.3(CTAF) 257.8	121.9	122.95



CATEGORY	A	B	C	D
S-14	900-1	387 (400-1)	900-1 1/2	387 (400-1 1/2)
CIRCLING	940-1 424 (500-1)	980-1 464 (500-1)	1020-1 1/2 504 (600-1 1/2)	1160-2 644 (700-2)

SC-3, 20 FEB 2025 to 20 MAR 2025

SC-3, 20 FEB 2025 to 20 MAR 2025