

VORTAC ACT <b>115.3</b> Chan 100	APP CRS <b>321°</b>	Rwy Idg TDZE Apt Elev	<b>5103</b> <b>516</b> <b>516</b>
--	------------------------	-----------------------------	---

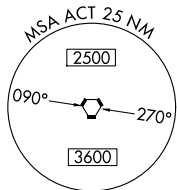
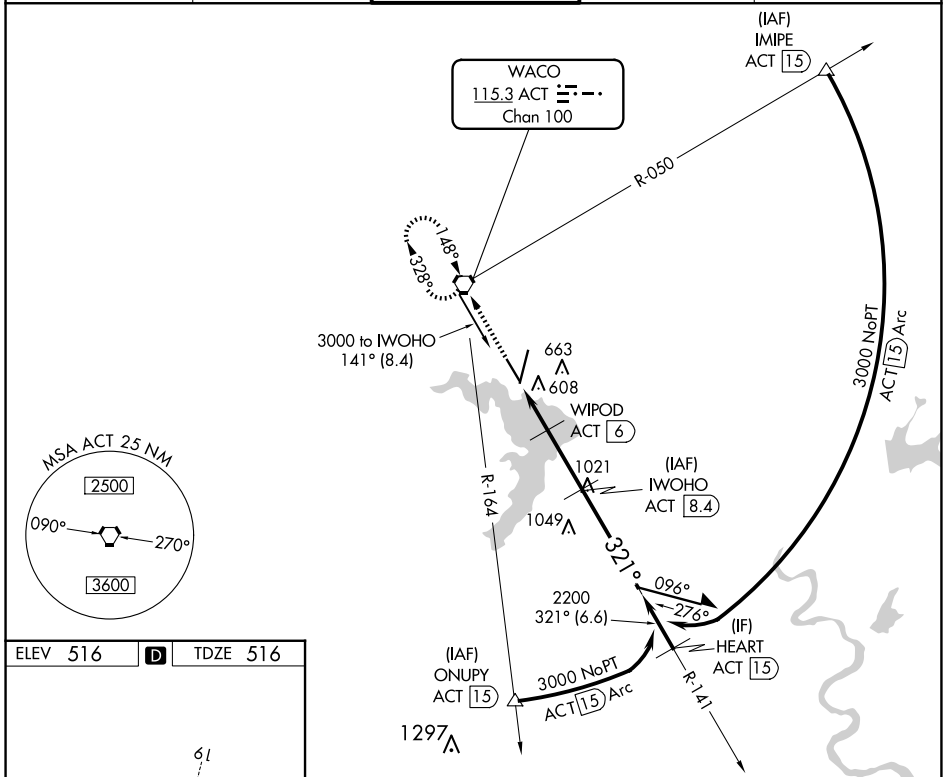
# VOR/DME RWY 32

WACO RGNL (ACT)

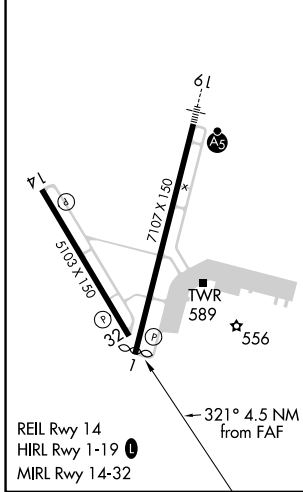
**ASR** VDP NA with Mc Gregor Exec altimeter setting. When local altimeter setting not received use Mc Gregor Exec altimeter setting and increase all MDA 40 feet; increase S-32 Cats C/D visibility 1/8 mile and Circling Cat D visibility 1/4 mile.

MISSED APPROACH: Climb to 3000 direct ACT VORTAC and hold, continue climb-in-hold to 3000.

ATIS <b>123.85</b>	WACO APP CON * <b>127.65 227.125</b>	WACO TOWER * <b>119.3 (CTAF) 0 257.8</b>	GND CON <b>121.9</b>	UNICOM <b>122.95</b>
-----------------------	---	---	-------------------------	-------------------------



ELEV 516	<b>D</b>	TDZE 516
----------	----------	----------



3000 ACT	WIPOD ACT [6]	IWOHO ACT [8.4]	Remain within 10 NM	
ACT [4]	ACT [4.9]	3000	321°	
1300	2200	141°	3.42° TCH 61	
0.9	1.1	2.4	VGSI and descent angles not coincident (VGSI Angle 3.00/TCH 58).	
CATEGORY	A	B	C	D
S-32	860-1 344 (400-1)			
<b>C</b> CIRCLING	940-1 424 (500-1)	980-1 464 (500-1)	1020-1½ 504 (600-1½)	1160-2 644 (700-2)

SC-3, 20 FEB 2025 to 20 MAR 2025

SC-3, 20 FEB 2025 to 20 MAR 2025