

ILS or LOC RWY 20

WALLA WALLA RGNL (ALW)

LOC I-ALW 111.7	APP CRS 202°	Rwy Ldg TDZE Apt Elev	6527 1194 1194
---------------------------	------------------------	-----------------------------	---

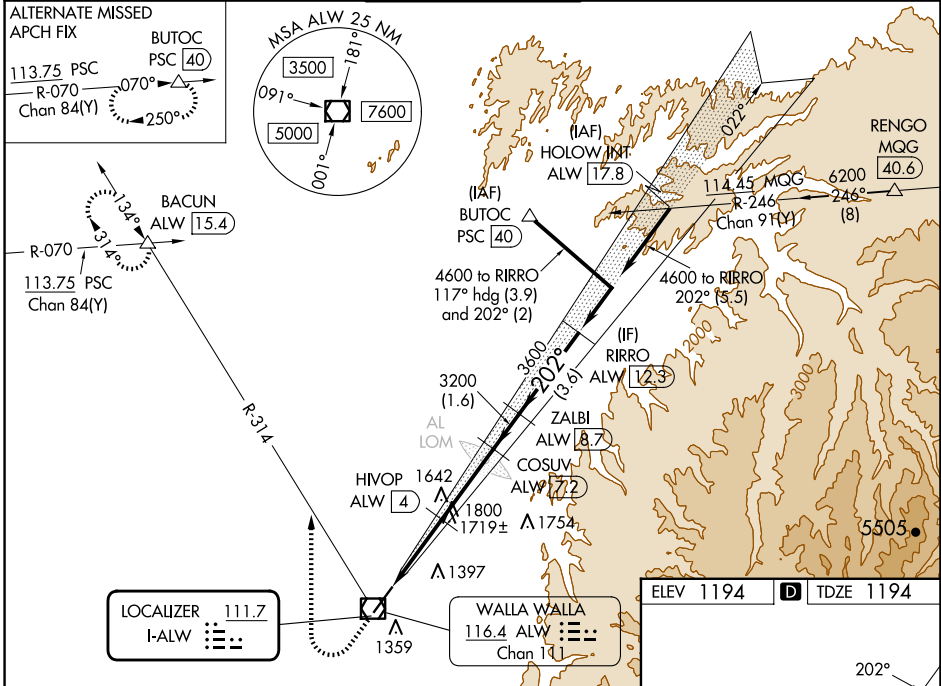
DME required.

▼ DME from ALW VOR/DME. Simultaneous reception of I-ALW and ALW VOR/DME required. For inop ALS, increase S-LOC 20 Cat C/D visibility to 2½ SM.
▲ #RVR 1800 authorized with use of FD or AP or HUD to DA (NA when using Pendleton altimeter setting).

MALS R

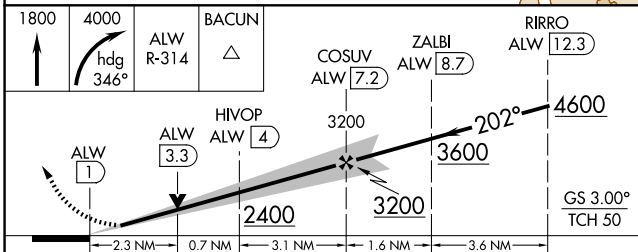
MISSED APPROACH: Climb to 1800 then climbing right turn to 4000 on heading 346° and ALW VOR/DME R-314 to BACUN INT/ALW 15.4 DME and hold.

ASOS 135.875	SPOKANE APP CON* 133.15 379.15	WALLA WALLA TOWER* 118.5 (CTAF) 289.4	GND CON 121.6 289.4	UNICOM 122.95
------------------------	--	---	-------------------------------	-------------------------



NW-1, 20 FEB 2025 to 20 MAR 2025

NW-1, 20 FEB 2025 to 20 MAR 2025



CATEGORY	A	B	C	D
S-ILS 20#	1394/24		200 (200-½)	
S-LOC 20	1980/24 786 (800-½)	1980/40 786 (800-¾)	1980-1¾ 786 (800-1¾)	
CIRCLING	1980-1 786 (800-1)	1980-1¼ 786 (800-1¼)	2120-2¾ 926 (1000-2¾)	2300-3 1106 (1200-3)

