

WAAS CH 72805 W02A	APP CRS 022°	Rwy Idg TDZE 1175 Apt Elev 1194	6527
--	------------------------	---	-------------

RNAV (GPS) RWY 2

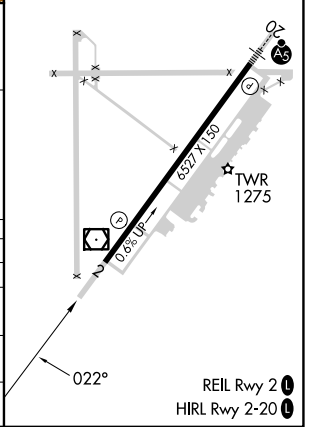
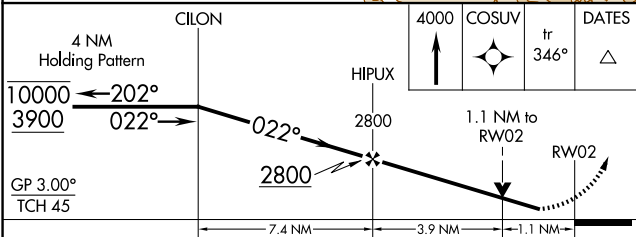
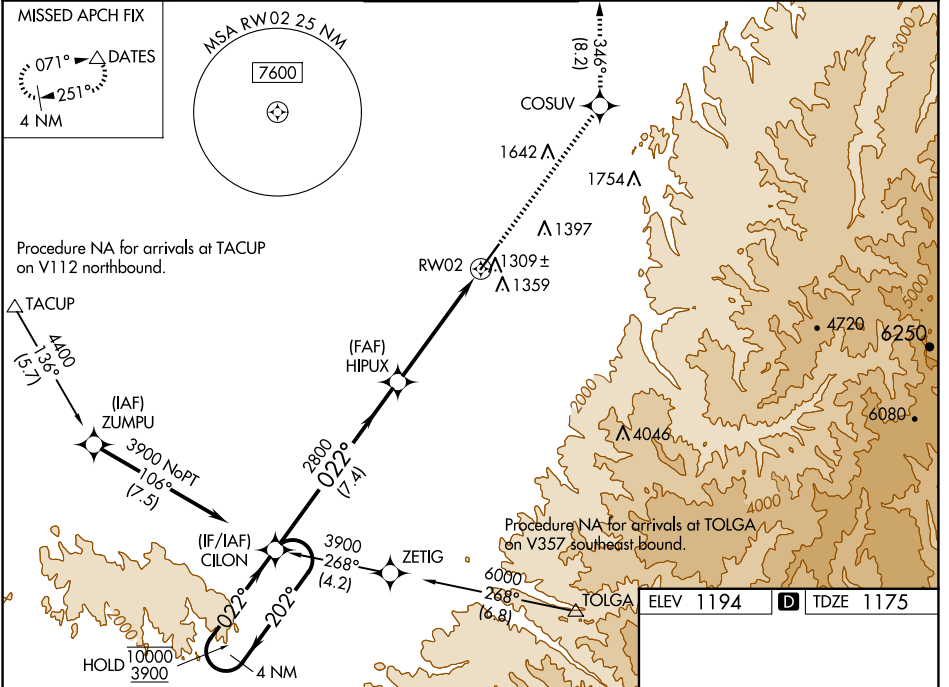
WALLA WALLA RGNL (ALW)

RNP APCH - GPS.

⚠ Rwy 2 helicopter visibility reduction below $\frac{3}{4}$ SM NA. For uncompensated Baro-VNAV systems, LNAV/VNAV NA below -11°C or above 54°C.

MISSED APPROACH: Climb to 4000 direct COSUV and on track 346° to DATES and hold.

ASOS 135.875	SPOKANE APP CON * 133.15 379.15	WALLA WALLA TOWER * 118.5 (CTAF) 289.4	GND CON 121.6 289.4	UNICOM 122.95
------------------------	---	--	-------------------------------	-------------------------



CATEGORY	A	B	C	D
LPV DA		1375- $\frac{3}{4}$	200 (200- $\frac{3}{4}$)	
LNAV/VNAV DA		1511-1	336 (400-1)	
LNAV MDA	1560-1	385 (400-1)	1560-1 $\frac{1}{8}$	385 (400-1 $\frac{1}{8}$)
C CIRCLING	1760-1 566 (600-1)	1820-1 626 (700-1)	2120-2 $\frac{3}{4}$ 926 (1000-2 $\frac{3}{4}$)	2300-3 1106 (1200-3)

NW-1, 20 FEB 2025 to 20 MAR 2025

NW-1, 20 FEB 2025 to 20 MAR 2025