

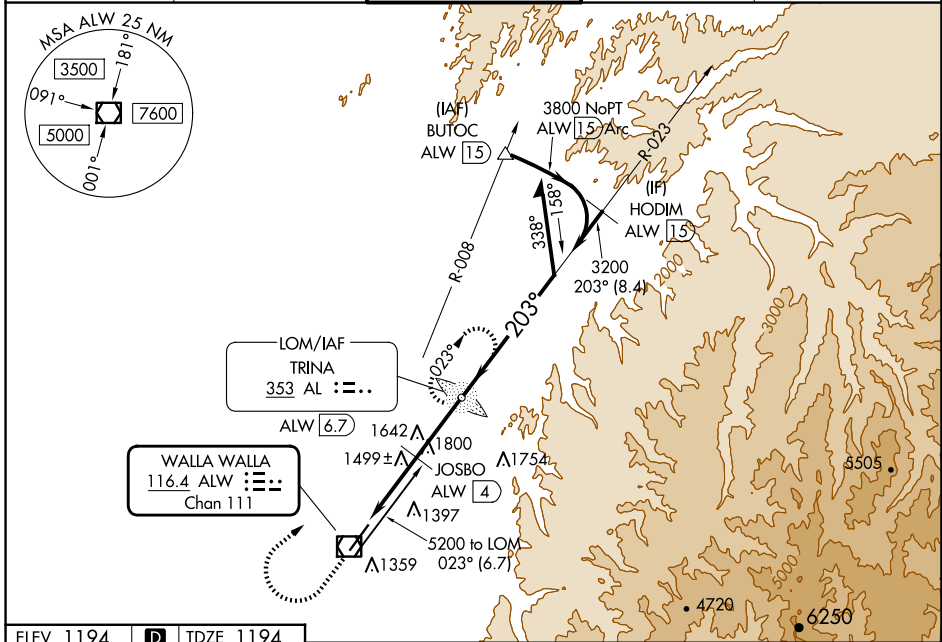
VOR/DME ALW 116.4 Chan 111	APP CRS 203°	Rwy Idg 6527 TDZE 1194 Apt Elev 1194
--	------------------------	---

VOR RWY 20

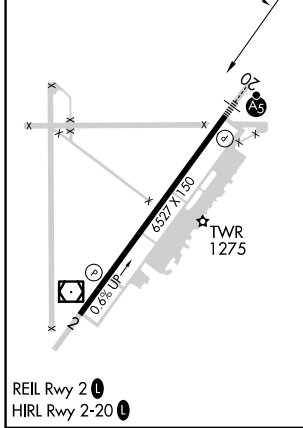
WALLA WALLA RGNL (ALW)

ADF required.	MALSR	MISSED APPROACH: Climb to 2300 then climbing right turn to 5100 direct TRINA LOM/ALW 6.7 DME and hold, continue climb-in-hold to 5100.
<p>▼</p> <p>▲ NA For inop ALS, increase JOSBO fix minimums S-20 Cats C/D visibility to 1½ SM.</p>		

ASOS 135.875	SPOKANE APP CON* 133.15 379.15	WALLA WALLA TOWER* 118.5 (CTAF) 289.4	GND CON 121.6 289.4	UNICOM 122.95
------------------------	--	---	-------------------------------	-------------------------



ELEV 1194	D	TDZE 1194
-----------	----------	-----------



2300	5100	AL	TRINA AL LOM ALW 6.7	Remain within 10 NM
ALW VOR/DME	ALW 2.6	JOSBO ALW 4	3200	4900
1.6 NM	1.4 NM	2.7 NM	2140*	3200
*2260 when using Pendleton altimeter setting.				

CATEGORY	A	B	C	D
S-20	2140/40	946 (1000-¾)	2140-2	946 (1000-2)
C CIRCLING	2140-1¼	946 (1000-½)	2140-2¾	2300-3
JOSBO FIX MINIMUMS (DME REQUIRED)				
S-20	1760/24	566 (600-½)	1760-1¼	566 (600-1¼)
C CIRCLING	1760-1	1820-1	2120-2¾	2300-3
	566 (600-1)	626 (700-1)	926 (1000-2¾)	1106 (1200-3)

NW-1, 20 FEB 2025 to 20 MAR 2025

NW-1, 20 FEB 2025 to 20 MAR 2025