

HI-ILS or LOC Z RWY 33

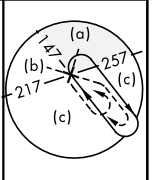
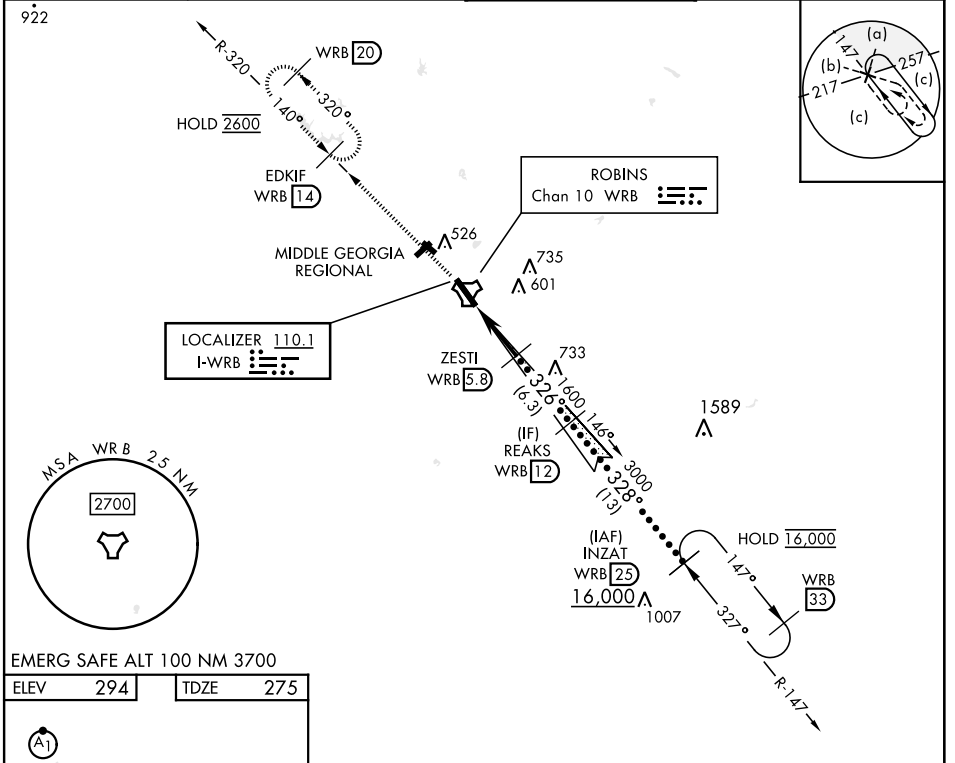
LOC I-WRB 110.1	APCH CRS 326°	Rwy ldg 12,001 TDZE 275 Arprt Elev 294	[USAF]	ROBINS AFB (KWRB)
---------------------------	-------------------------	---	--------	-------------------

* When ALS inop, increase RVR to 40, vis to ¼ mile.
 ** When ALS inop, increase RVR to 55, vis to 1 mile.
 *** Circling not authorized SW of Rwy 15-33.

ALSIF-1

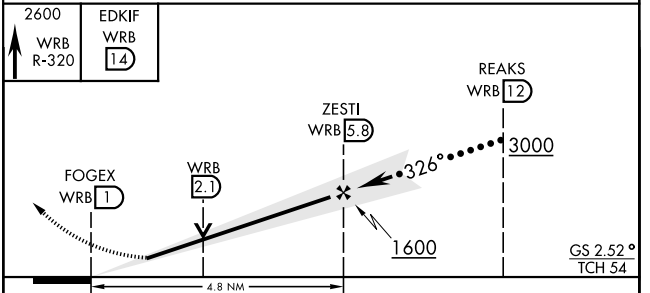
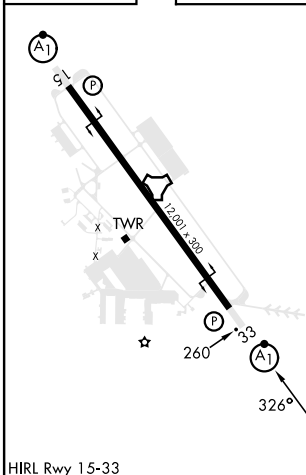
MISSED APPROACH: Climb To 2600 on WRB TACAN R-320 to EDKIF and hold.

ATIS 119.475 273.475	ATLANTA APP CON 124.2 279.6	TOWER 133.225 257.975	GND CON 121.85 275.8
--------------------------------	---------------------------------------	---------------------------------	--------------------------------



EMERG SAFE ALT 100 NM 3700

ELEV	294	TDZE	275
------	-----	------	-----



CATEGORY	C	D	E
S-ILS 33*	475/24	200	(200-½)
S-LOC 33**	640/35	365	(400-¾)
*** CIRCLING	880-1½	960-2	1040-2¾
	586 (600-1½)	666 (700-2)	746 (800-2¾)

HI-ILS or LOC Z RWY 33

SE-4, 20 FEB 2025 to 20 MAR 2025

SE-4, 20 FEB 2025 to 20 MAR 2025