

HI-TACAN Z RWY 33

TACAN WRB Chan 10	APCH CRS 327°	Rwy ldg 12,001 TDZE 275 Arprt Elev 294
-----------------------------	-------------------------	---

[USAF]

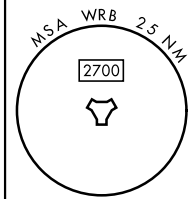
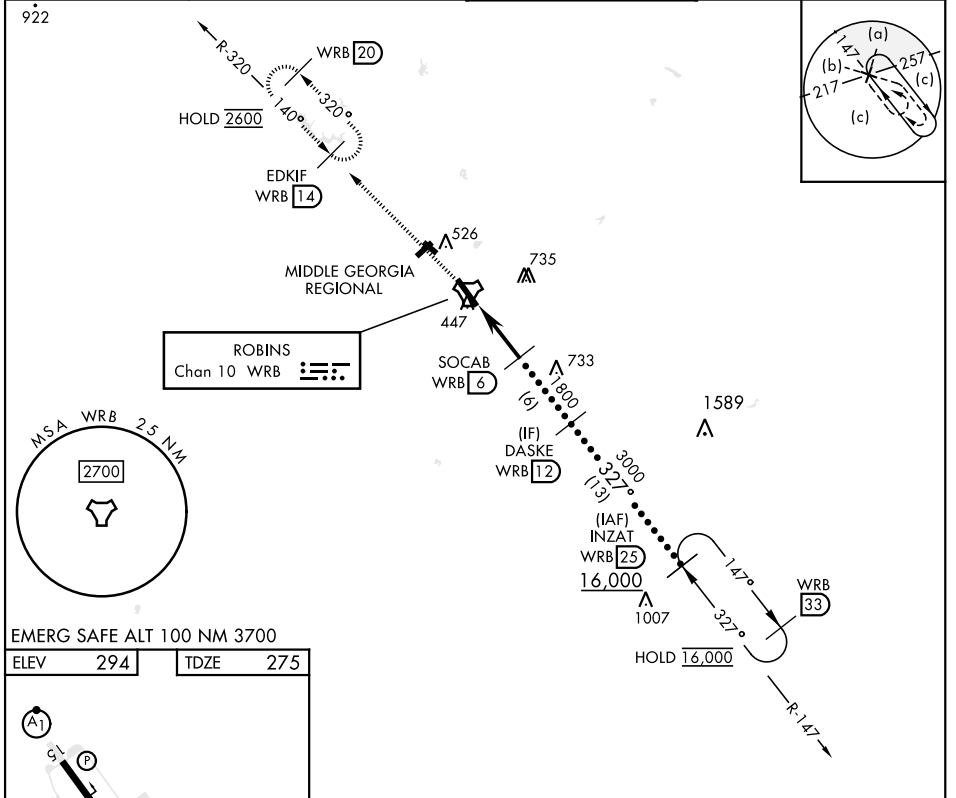
ROBINS AFB (KWRB)

* When ALS inop, increase CAT CDE vis to 1 3/8 miles.
 ** Circling NA SW of Rwy 15-33.



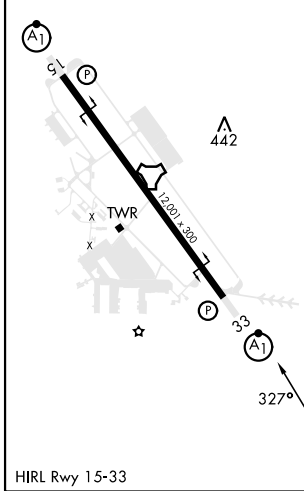
MISSED APPROACH: Climb To 2600 on WRB TACAN R-320 to EDKIF and hold.

ATIS 119.475 273.475	ATLANTA APP CON 124.2 279.6	TOWER 133.225 257.975	GND CON 121.85 275.8
--------------------------------	---------------------------------------	---------------------------------	--------------------------------



EMERG SAFE ALT 100 NM 3700

ELEV	294	TDZE	275
------	-----	------	-----



2600 WRB R-320	EDKIF WRB 14			INZAT WRB 25
TACAN		SOCAB WRB 6	DASKE WRB 12	INZAT WRB 25
CAPMI WRB 1		WRB 2.3	1800	16,000
CATEGORY		C	D	E
S-33*		720/45	445	(500- 7/8)
CIRCLING**		880-1 1/2 586 (600-1 1/2)	960-2 666 (700-2)	1040-2 3/4 746 (800-2 3/4)

HI-TACAN Z RWY 33

SE-4, 20 FEB 2025 to 20 MAR 2025

SE-4, 20 FEB 2025 to 20 MAR 2025