

ILS or LOC Y RWY 33

LOC I-WRB 110.1	APCH CRS 326°	Rwy Ldg 12,001
		TDZE 275
		Arpt Elev 294

[USAF]

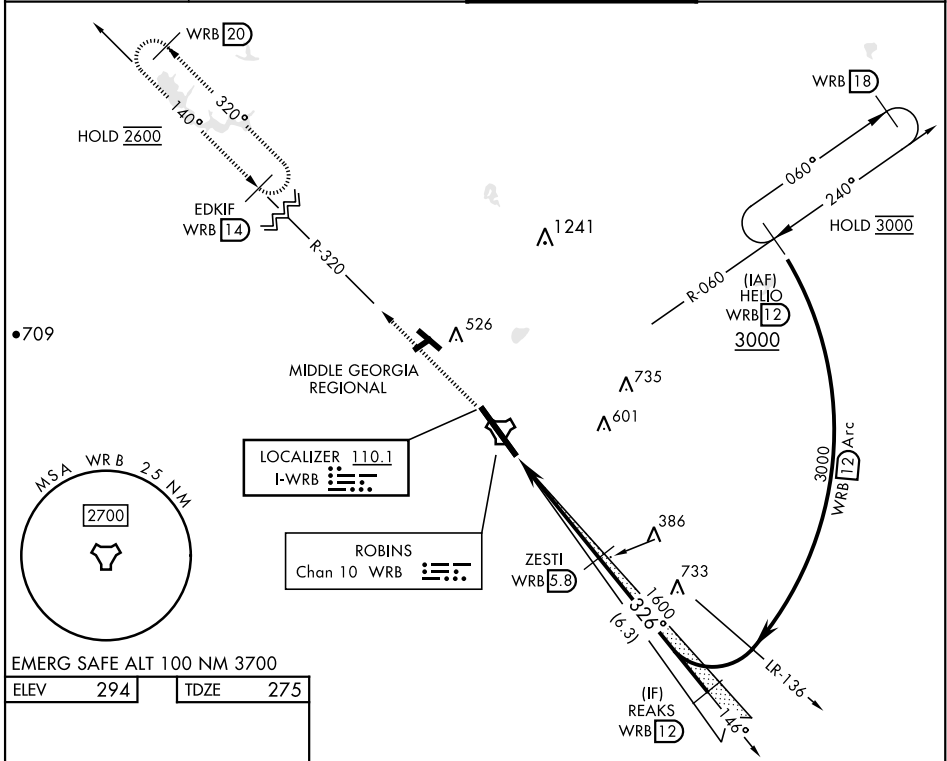
ROBINS AFB (KWRB)

* When ALS inop, increase RVR to 40, vis to ¾ mile.
 ** When ALS inop, increase RVR to 55, vis to 1 mile.
 *** Circling NA SW of Rwy 15-33.

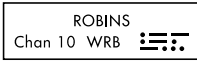
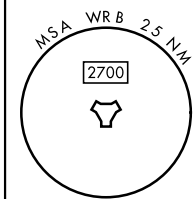


MISSED APPROACH: Climb To 2600 on WRB TACAN R-320 to EDKIF and hold.

ATIS 119.475 273.475	ATLANTA APP CON 124.2 279.6	TOWER 133.225 257.975	GND CON 121.85 275.8
--------------------------------	---------------------------------------	---------------------------------	--------------------------------

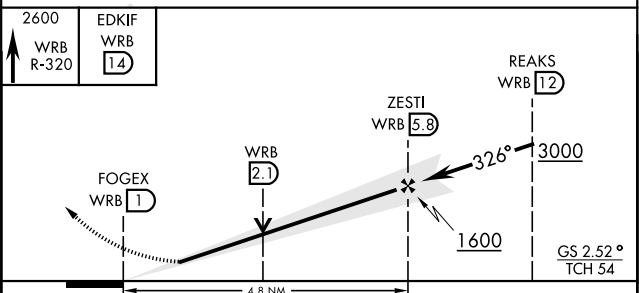
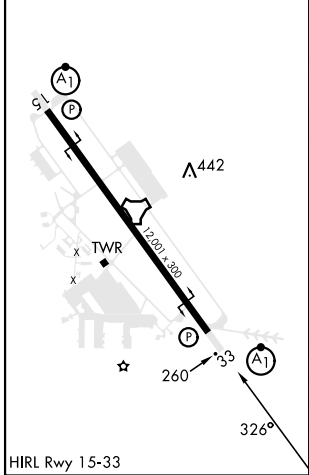


•709



EMERG SAFE ALT 100 NM 3700

ELEV	294	TDZE	275
------	-----	------	-----



CATEGORY	A	B	C	D	E
S-ILS 33*	475/24		200	(200-½)	
S-LOC 33**	640/24	365 (400-½)	640/35		365 (400-¾)
C CIRCLING ***	780-1	486 (500-1)	880-1½ 586 (600-1½)	960-2 666 (700-2)	1040-2¾ 746 (800-2¾)

WARNER ROBINS, GEORGIA
 Orig 20MAY21

32° 38' N-83° 36' W

ROBINS AFB (KWRB)

ILS or LOC Y RWY 33

SE-4, 20 FEB 2025 to 20 MAR 2025

SE-4, 20 FEB 2025 to 20 MAR 2025