

RNAV (GPS) RWY 15

APCH CRS	Rwy Idg	12,001
146°	TDZE	294
	Arprt Elev	294

- (USAF)

ROBINS AFB (KWRB)

* When ALS inop, increase CAT AB RVR to 55, vis to 1 mile, CAT CDE vis to 1 5/8 miles.
 ** Circling NA SW of Rwy 15-33.

ALSF-1

MISSED APPROACH: Climb to 2700 direct LETIC and hold.

ATIS 119.475 273.475	ATLANTA APP CON/DEP CON 124.2 279.6	TOWER 133.225 257.975	GND CON 121.85 275.8
-------------------------	--	--------------------------	-------------------------

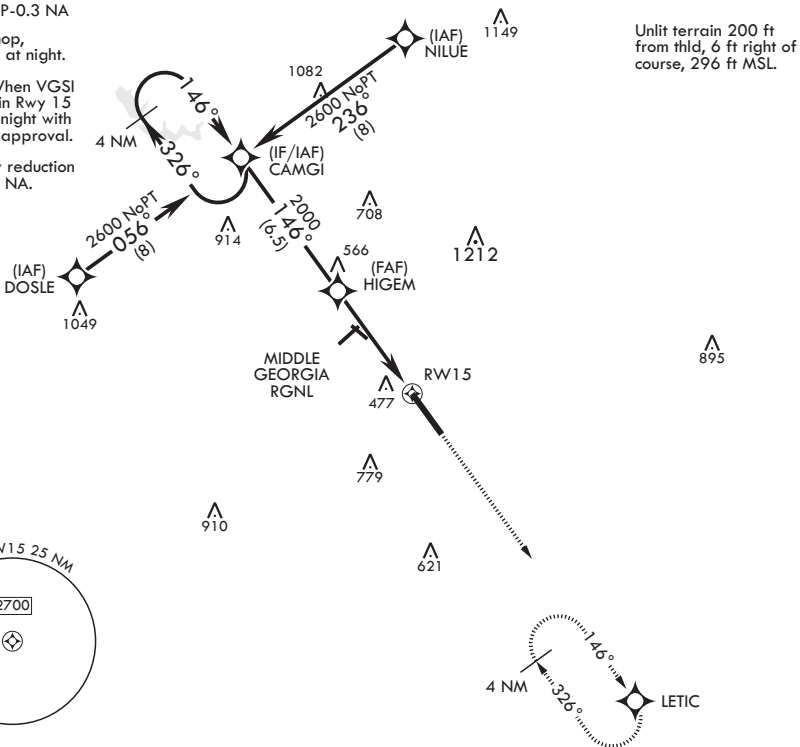
DME/DME RNP-0.3 NA

When VGSi inop, procedure NA at night.

USAF Only: When VGSi inop, straight-in Rwy 15 authorized at night with MAJCOM A3 approval.

RNAV visibility reduction by helicopters NA.

729



Unlit terrain 200 ft from thld, 6 ft right of course, 296 ft MSL.

EMERG SAFE ALT 100 NM 3700

4 NM Holding Pattern	CAMGI	VGSi and descent angle not coincident.	2700	LETIC	ELEV 294	TDZE 294
2600	← 326°	→ 146°	146°	3.11° TCH 55	146°	
CATEGORY	A	B	C	D	E	
RNAV MDA*	860/50	566 (600-1)	860-1¼	566	(600-1¼)	
CIRCLING**	860-1	567 (600-1)	860-1¼ 567 (600-1¼)	960-2 667 (700-2)	1100-2¼ 807 (900-2¼)	

The inset diagram shows the airport layout with RWY 15 highlighted. It includes the tower (TWR), runway 33, and the holding pattern at LETIC. The runway length is 12,001 x 300 feet. The diagram also shows the HIRL (High Intensity Runway Lighting) for all runways.

RNAV (GPS) RWY 15

SE-4, 20 FEB 2025 to 20 MAR 2025

SE-4, 20 FEB 2025 to 20 MAR 2025